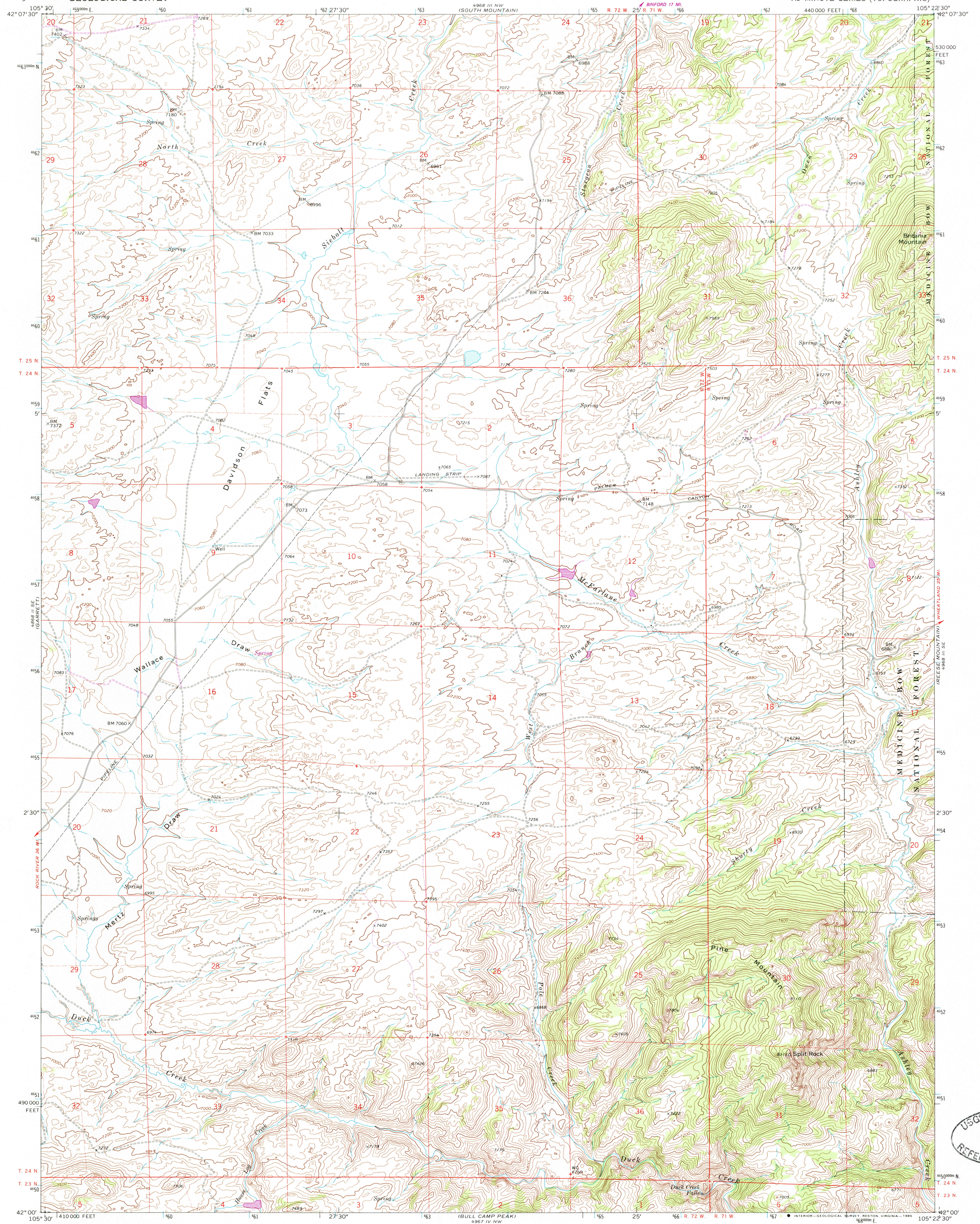


UNITED STATES
DEPARTMENT OF THE INTERIOR
GEOLOGICAL SURVEY

DAVIDSON FLATS QUADRANGLE
WYOMING-ALBANY CO.
7.5 MINUTE SERIES (TOPOGRAPHIC)

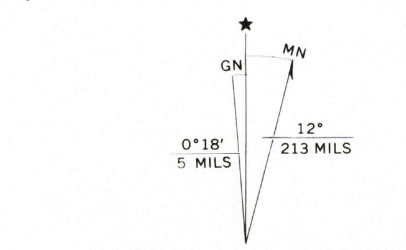


Mapped, edited, and published by the Geological Survey

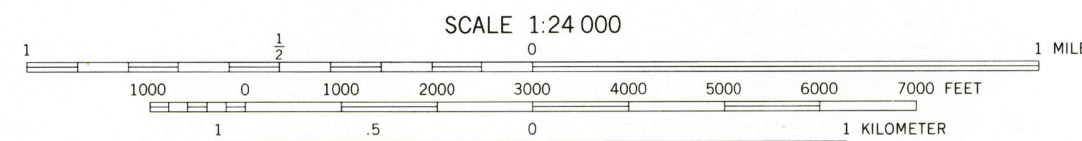
Control by USGS and NOS/NOAA
Topography by photogrammetric methods from aerial photographs taken 1967. Field checked 1968
Polyconic projection. 1927 North American Datum
10,000-foot grid based on Wyoming coordinate system east zone
1000-meter Universal Transverse Mercator grid ticks, zone 13, shown in blue
Fine red dashed lines indicate selected fence lines

To place on the predicted North American Datum 1983 move the projection lines 7 meters north and 48 meters east as shown by dashed corner ticks

There may be private inholdings within the boundaries of the National or State reservations shown on this map

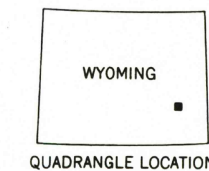


Revisions shown in purple compiled from aerial photographs taken 1981 and other source data. Partial field check by U. S. Forest Service. Map edited 1985



CONTOUR INTERVAL 40 FEET
DOTTED LINES REPRESENT 20 FOOT CONTOURS
NATIONAL GEODETIC VERTICAL DATUM OF 1929

THIS MAP COMPLIES WITH NATIONAL MAP ACCURACY STANDARDS
FOR SALE BY U. S. GEOLOGICAL SURVEY, DENVER, COLORADO 80225, OR RESTON, VIRGINIA 22092
A FOLDER DESCRIBING TOPOGRAPHIC MAPS AND SYMBOLS IS AVAILABLE ON REQUEST



ROAD CLASSIFICATION
Light-duty road, all weather, improved surface
Unimproved road, fair or dry weather

DAVIDSON FLATS, WYO.
42105-A4-TF-024

1968
PHOTOREVISED 1985
DMA 4968 III SW-SERIES B874

USGS NMD RESEARCH
NOV 25 1985
REFERENCE COLLECTION