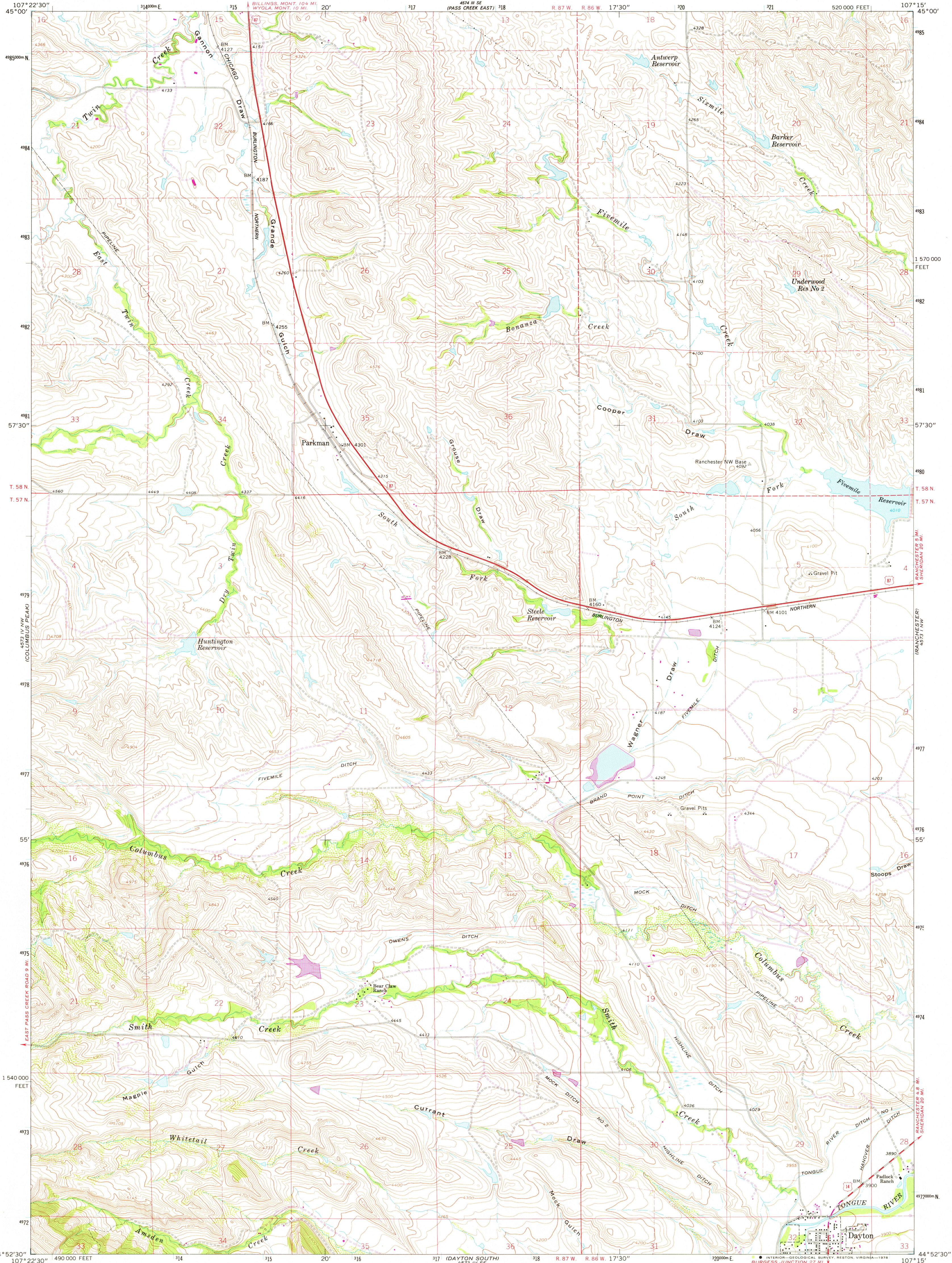
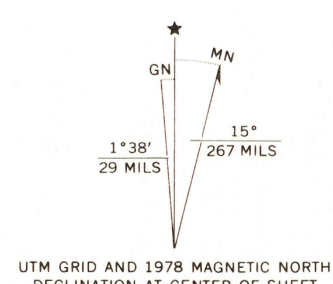


UNITED STATES  
DEPARTMENT OF THE INTERIOR  
GEOLOGICAL SURVEY

DAYTON NORTH QUADRANGLE  
WYOMING—SHERIDAN CO.  
7.5 MINUTE SERIES (TOPOGRAPHIC)



Mapped, edited, and published by the Geological Survey  
Control by USGS and NOS/NOAA  
Topography by photogrammetric methods from aerial  
photographs taken 1963. Field checked 1964  
Polyconic projection. 1927 North American datum  
10,000-foot grid based on Wyoming coordinate system,  
east central zone  
1000-meter Universal Transverse Mercator grid ticks,  
zone 13, shown in blue  
Fine red dashed lines indicate selected fence lines  
Revisions shown in purple compiled from aerial photographs taken  
1976. Map edited 1978. This information not field checked



SCALE 1:24,000  
CONTOUR INTERVAL 20 FEET  
NATIONAL GEODETIC VERTICAL DATUM OF 1929  
THIS MAP COMPLIES WITH NATIONAL MAP ACCURACY STANDARDS  
FOR SALE BY U. S. GEOLOGICAL SURVEY, DENVER, COLORADO 80225, OR RESTON, VIRGINIA 22092  
A FOLDER DESCRIBING TOPOGRAPHIC MAPS AND SYMBOLS IS AVAILABLE ON REQUEST

ROAD CLASSIFICATION  
Heavy-duty ——— Light-duty ———  
Medium-duty ——— Unimproved dirt ———  
U. S. Route

WYOMING  
QUADRANGLE LOCATION

USGS  
Historical File  
Topographic Division

DAYTON NORTH, WYO.  
N4452.5—W10715/7.5  
1964  
PHOTOREVISED 1978  
AMS 4573 IV NE—SERIES V874

JUL 3 1 1978  
5300

RETURN TO:  
USGS AND HISTORICAL MAP ARCHIVES