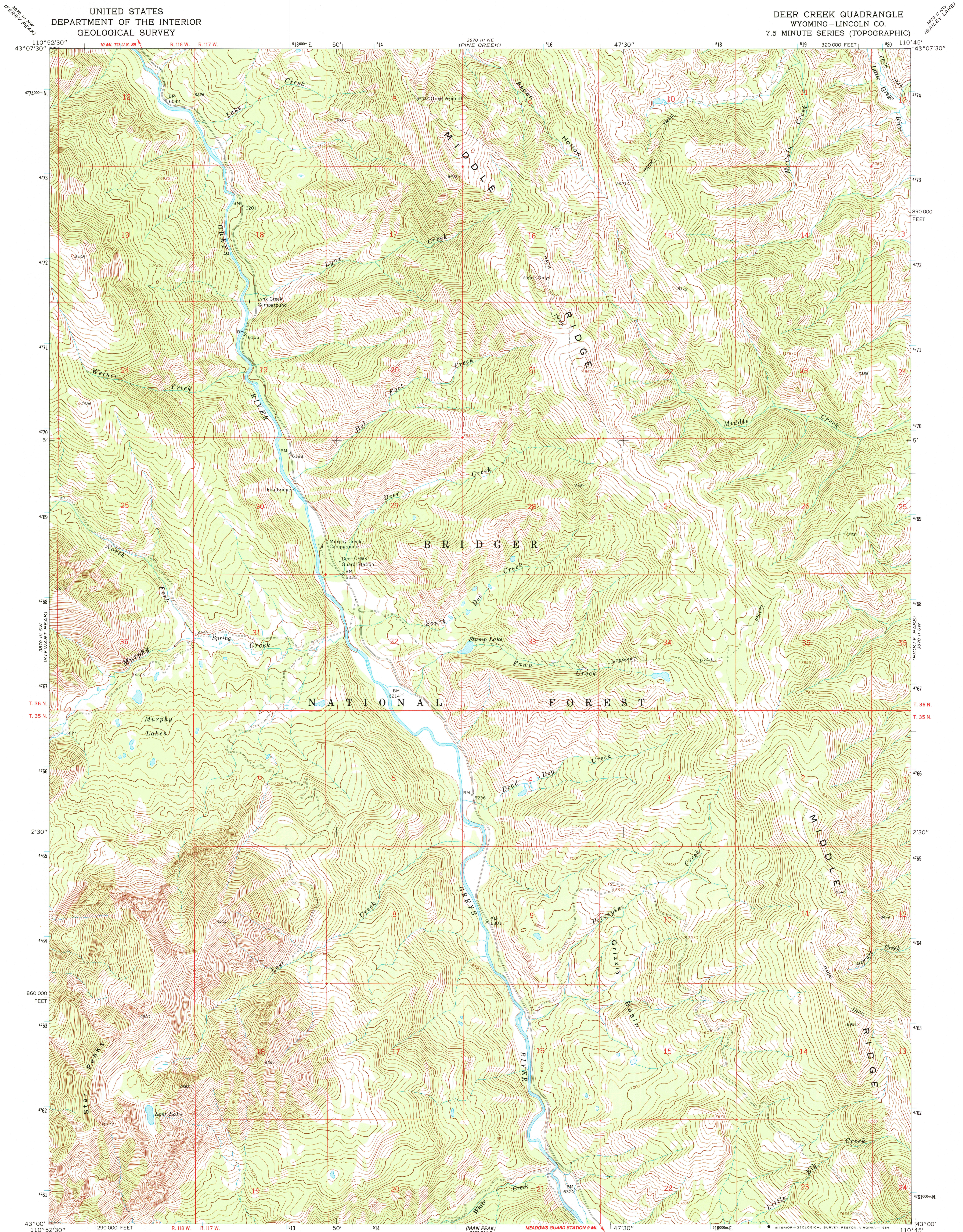


UNITED STATES
DEPARTMENT OF THE INTERIOR
GEOLOGICAL SURVEY

DEER CREEK QUADRANGLE
WYOMING—LINCOLN CO.
7.5 MINUTE SERIES (TOPOGRAPHIC)



Mapped, edited, and published by the Geological Survey

Control by USGS and USC&GS

Topography by photogrammetric methods from aerial

photographs taken 1964. Field checked 1965

Polyconic projection. 1927 North American datum

10,000-foot grid based on Wyoming coordinate system,

west zone

1000-meter Universal Transverse Mercator grid ticks,

zone 12, shown in blue

Where omitted, land lines have not been established

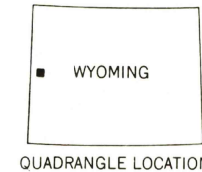
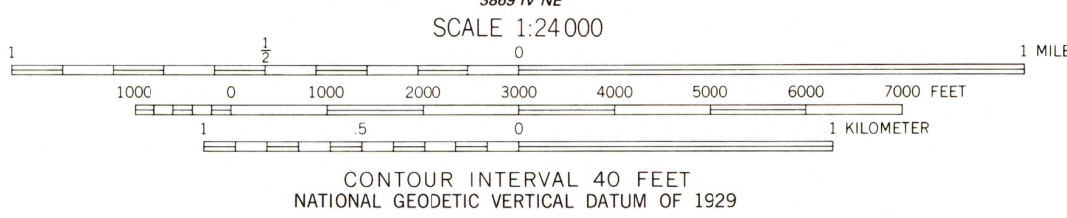
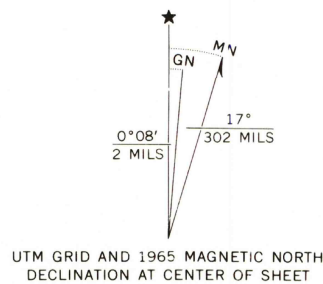
To place on the predicted North American Datum 1983

move the projection lines 11 meters north and

62 meters east as shown by dashed corner ticks

There may be private inholdings within the boundaries of the

National or State reservations shown on this map



ROAD CLASSIFICATION
Light-duty ————— Unimproved dirt —————

DEER CREEK, WYO.
N4300—W11045/7.5

1965
PHOTOINSPECTED 1979
DMA 3870 III SE—SERIES V074

THIS MAP COMPLIES WITH NATIONAL MAP ACCURACY STANDARDS
FOR SALE BY U. S. GEOLOGICAL SURVEY, DENVER, COLORADO 80225, OR RESTON, VIRGINIA 22092
A FOLDER DESCRIBING TOPOGRAPHIC MAPS AND SYMBOLS IS AVAILABLE ON REQUEST

Map photoinspected 1979
No major culture or drainage changes observed

RETURN TO:
USGS AND HISTORICAL MAP ARCHIVES