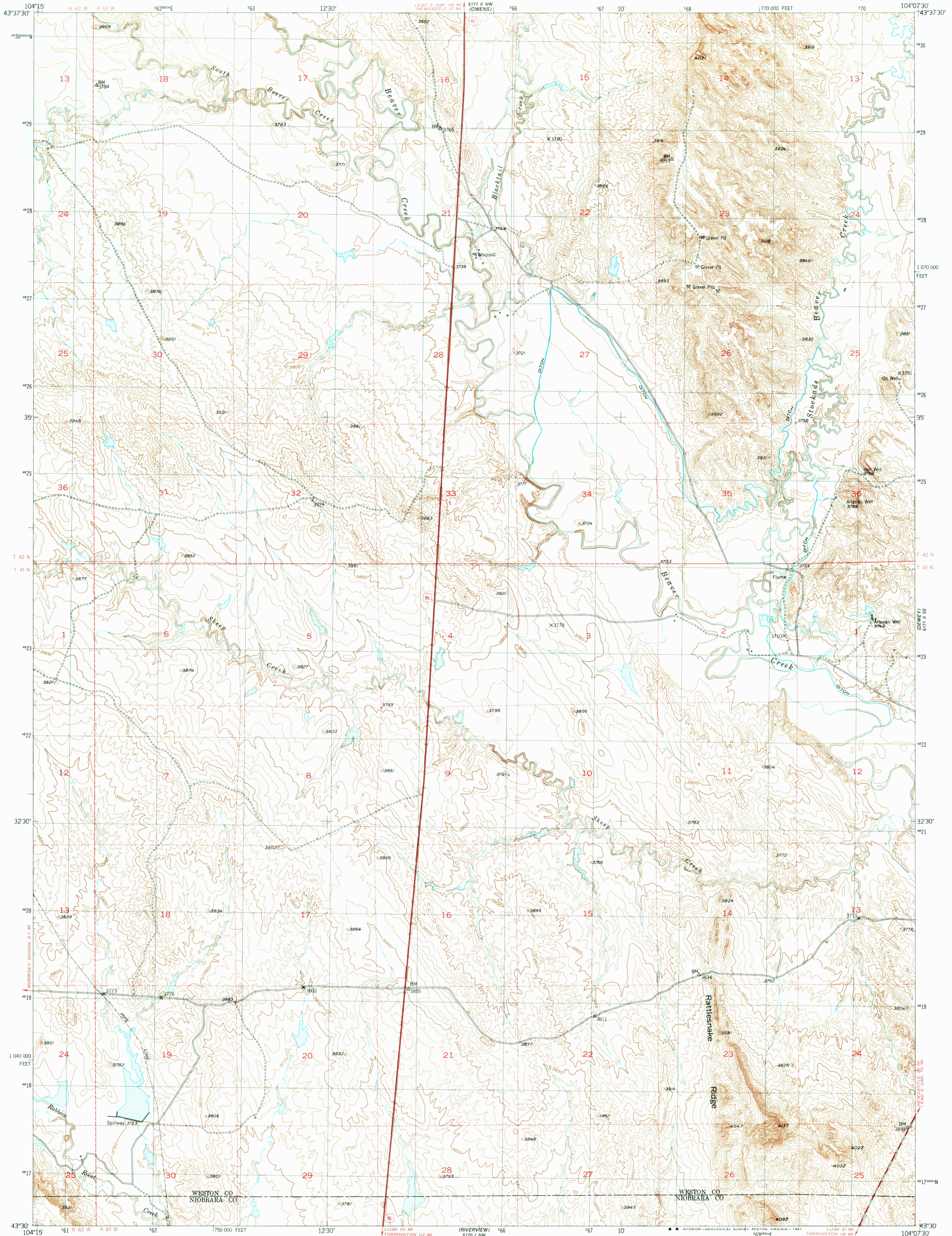


UNITED STATES
DEPARTMENT OF THE INTERIOR
GEOLOGICAL SURVEY

DEWEY SW QUADRANGLE
WYOMING
7.5 MINUTE SERIES (TOPOGRAPHIC)



Mapped, edited, and published by the Geological Survey as part of the Department of the Interior program for the development of the Missouri River Basin Control by USGS and USC&GS

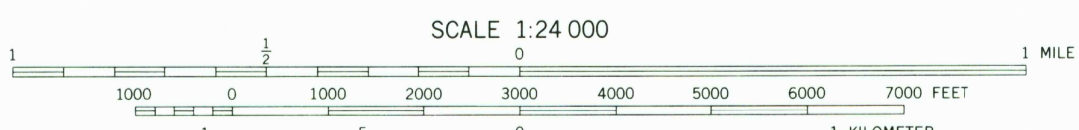
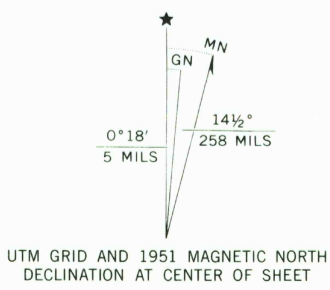
Topography from aerial photographs by multiplex methods by Tennessee Valley Authority. Aerial photographs taken 1948. Field check 1951

Polycyclic projection. 1927 North American datum 10,000-foot grid based on Wyoming coordinate system east zone

Dashed land lines indicate approximate locations

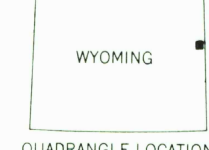
1000-meter Universal Transverse mercator grid, zone 13, shown in black

To place on the predicted North American Datum 1983 move the projection lines 7 meters north and 44 meters east as shown by dashed corner ticks



SCALE 1:24 000
CONTOUR INTERVAL 10 FEET
NATIONAL GEODETIC VERTICAL DATUM OF 1929

THIS MAP COMPLIES WITH NATIONAL MAP ACCURACY STANDARDS FOR SALE BY U. S. GEOLOGICAL SURVEY, DENVER, COLORADO 80225, OR RESTON, VIRGINIA 22092 A FOLDER DESCRIBING TOPOGRAPHIC MAPS AND SYMBOLS IS AVAILABLE ON REQUEST



Map photoinspected 1976
No major culture or drainage changes observed

ROAD CLASSIFICATION
Heavy-duty 4 LANE 16 LANE Light-duty
Medium-duty 2 LANE 6 LANE Unimproved dirt
U. S. Route State Route

DEWEY SW, WYO.
N4330-W10407.5/7.5

1951
PHOTOINSPECTED 1976
DMA 5171 II SW-SERIES V874

OCT 1 6 1981

SEATTLE
RETURN TO: ATTN: JAMES AND SUSAN
101 12

700