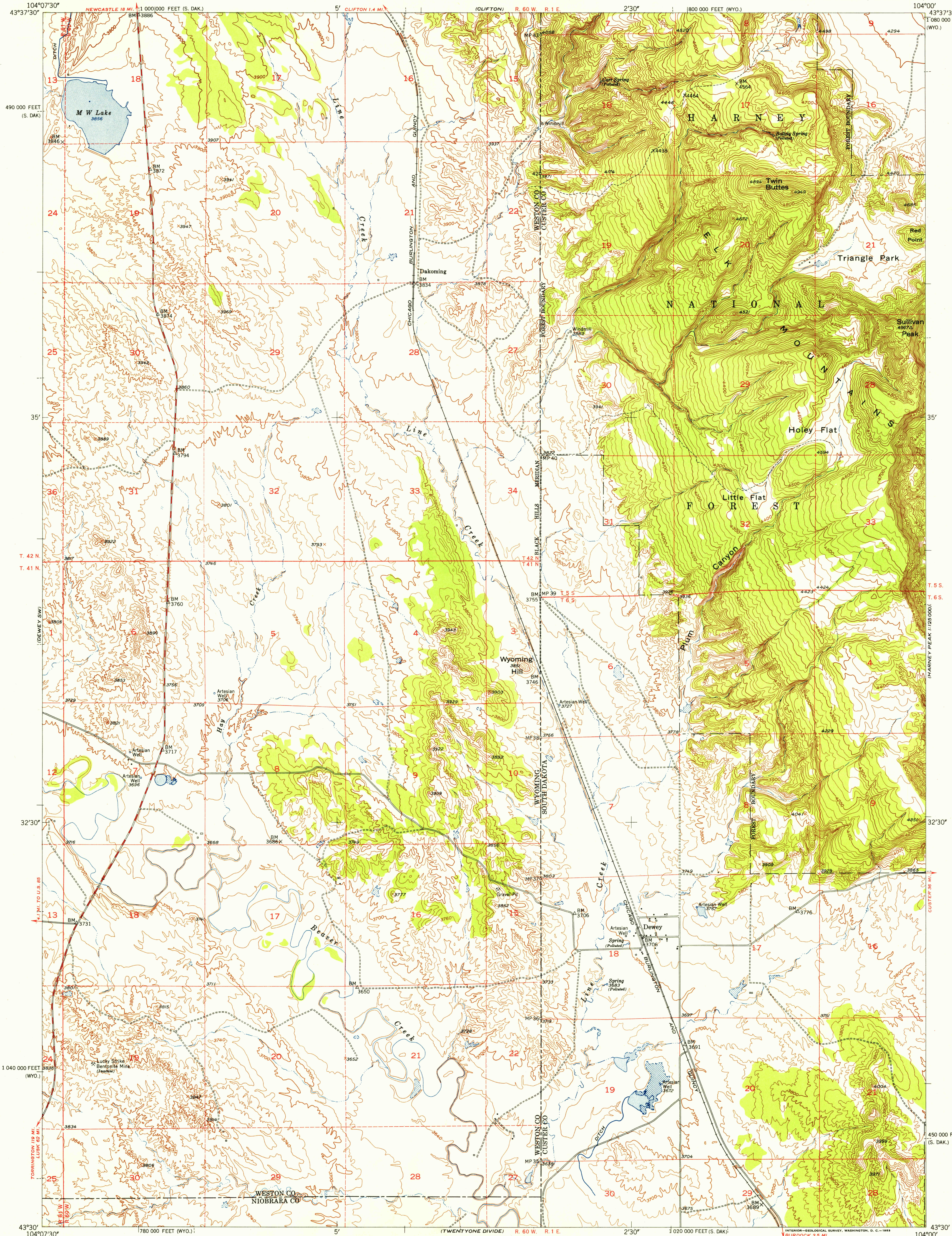


UNITED STATES
DEPARTMENT OF THE INTERIOR
GEOLOGICAL SURVEY

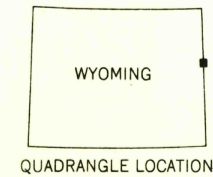
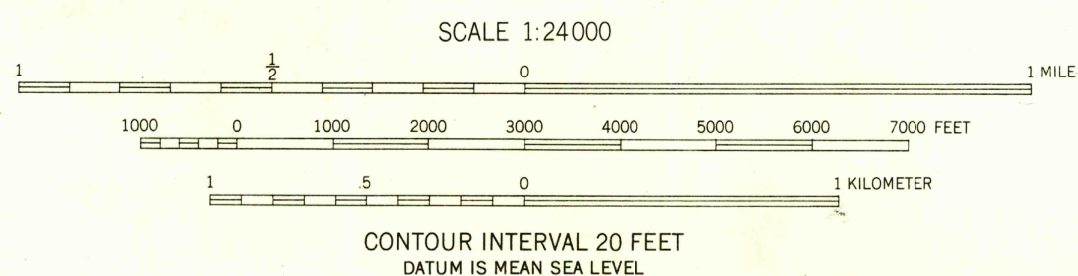
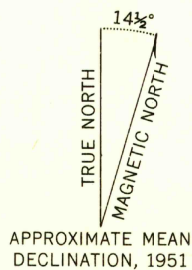
DEWEY QUADRANGLE
WYOMING-SOUTH DAKOTA
7.5 MINUTE SERIES (TOPOGRAPHIC)



Mapped, edited, and published by the Geological Survey
as part of the Department of the Interior program
for the development of the Missouri River Basin
Control by USGS and USC&GS

Topography from aerial photographs by multiplex methods
by Tennessee Valley Authority. Aerial photographs taken 1948
Field check 1951

Polyconic projection. 1927 North American datum
10,000-foot grid based on Wyoming coordinate system,
east zone and South Dakota coordinate system, south zone
Dashed land lines indicate approximate locations



ROAD CLASSIFICATION
Heavy-duty 4 LANE 16 LANE Light-duty
Medium-duty 4 LANE 16 LANE Unimproved dirt
U. S. Route State Route

DEWEY, WYO.-S. DAK.
N4330-W10400/7.5

1951

THIS MAP COMPLIES WITH NATIONAL MAP ACCURACY STANDARDS
FOR SALE BY U. S. GEOLOGICAL SURVEY, FEDERAL CENTER, DENVER, COLORADO OR WASHINGTON 25, D. C.
A FOLDER DESCRIBING TOPOGRAPHIC MAPS AND SYMBOLS IS AVAILABLE ON REQUEST

RETURN TO:
USGS AND HISTORICAL MAP ARCHIVES

U.S.G.S.
FILE COPY
1951

JUL 8 1953