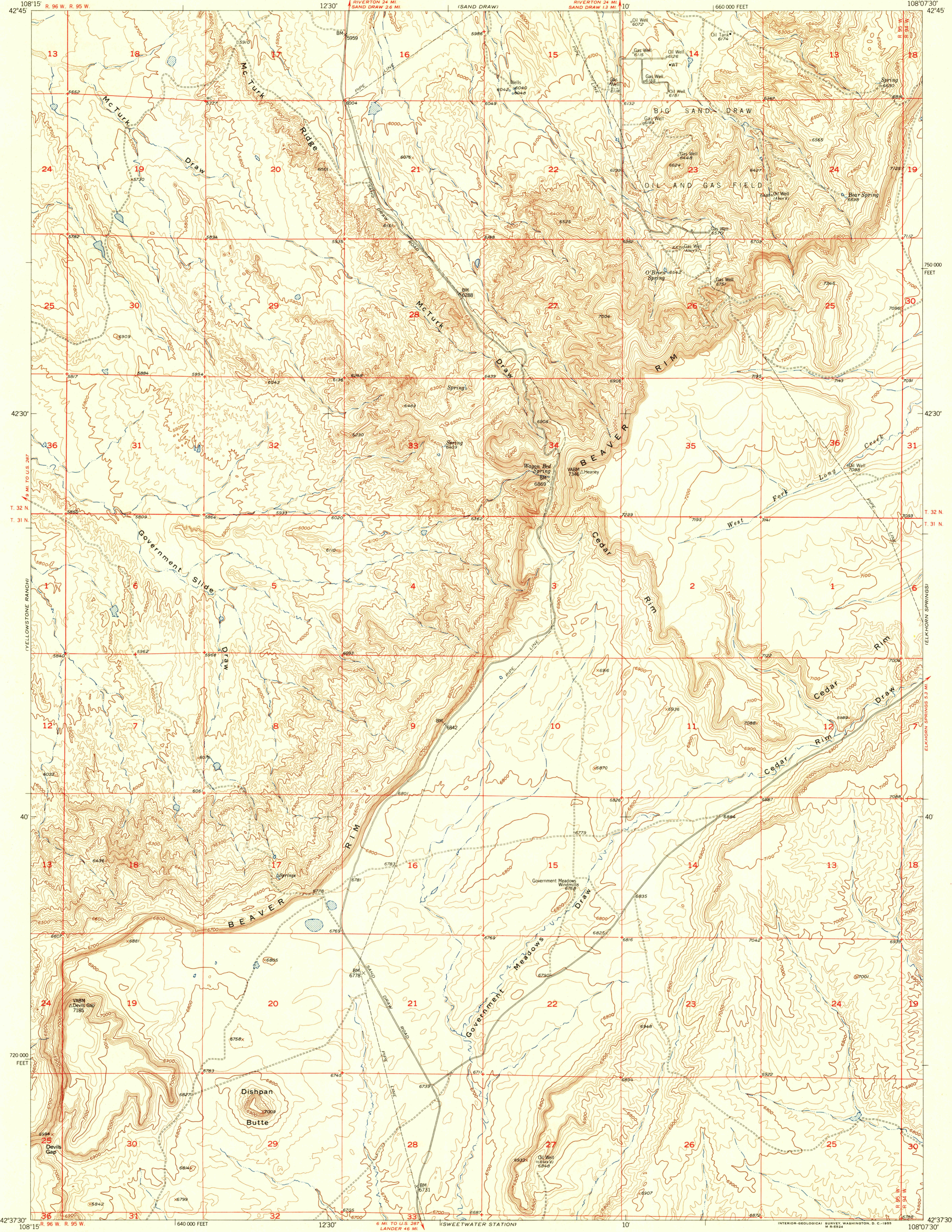
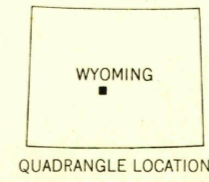
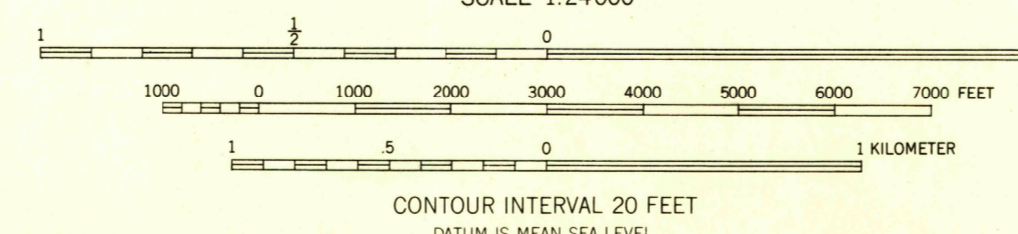
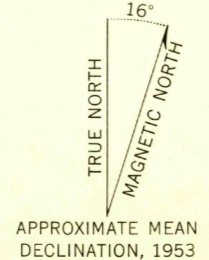


U.S.G.S.
FILE COPY
TOPOGRAPHIC DIVISION



Mapped, edited, and published by the Geological Survey as part of the Department of the Interior program for the development of the Missouri River Basin. Control by USGS and USC&GS. Topography from aerial photographs by multiple methods. Aerial photographs taken 1949. Field check 1953. Polyconic projection, 1927 North American datum, 10,000-foot grid based on Wyoming coordinate system, west central zone.



ROAD CLASSIFICATION

Heavy-duty	4 LANE 6 LANE	Light-duty
Medium-duty	4 LANE 6 LANE	Unimproved dirt

U. S. Route (circle with number)
State Route (circle with number)

THIS MAP COMPLIES WITH NATIONAL MAP ACCURACY STANDARDS
FOR SALE BY U. S. GEOLOGICAL SURVEY, FEDERAL CENTER, DENVER, COLORADO OR WASHINGTON 25, D. C.
A FOLDER DESCRIBING TOPOGRAPHIC MAPS AND SYMBOLS IS AVAILABLE ON REQUEST

DISHPAN BUTTE, WYO.
N4237.5-W10807.5/7.5

1953

U.S.G.S.
FILE COPY
TOPOGRAPHIC DIVISION

DEC 28 1954

2095