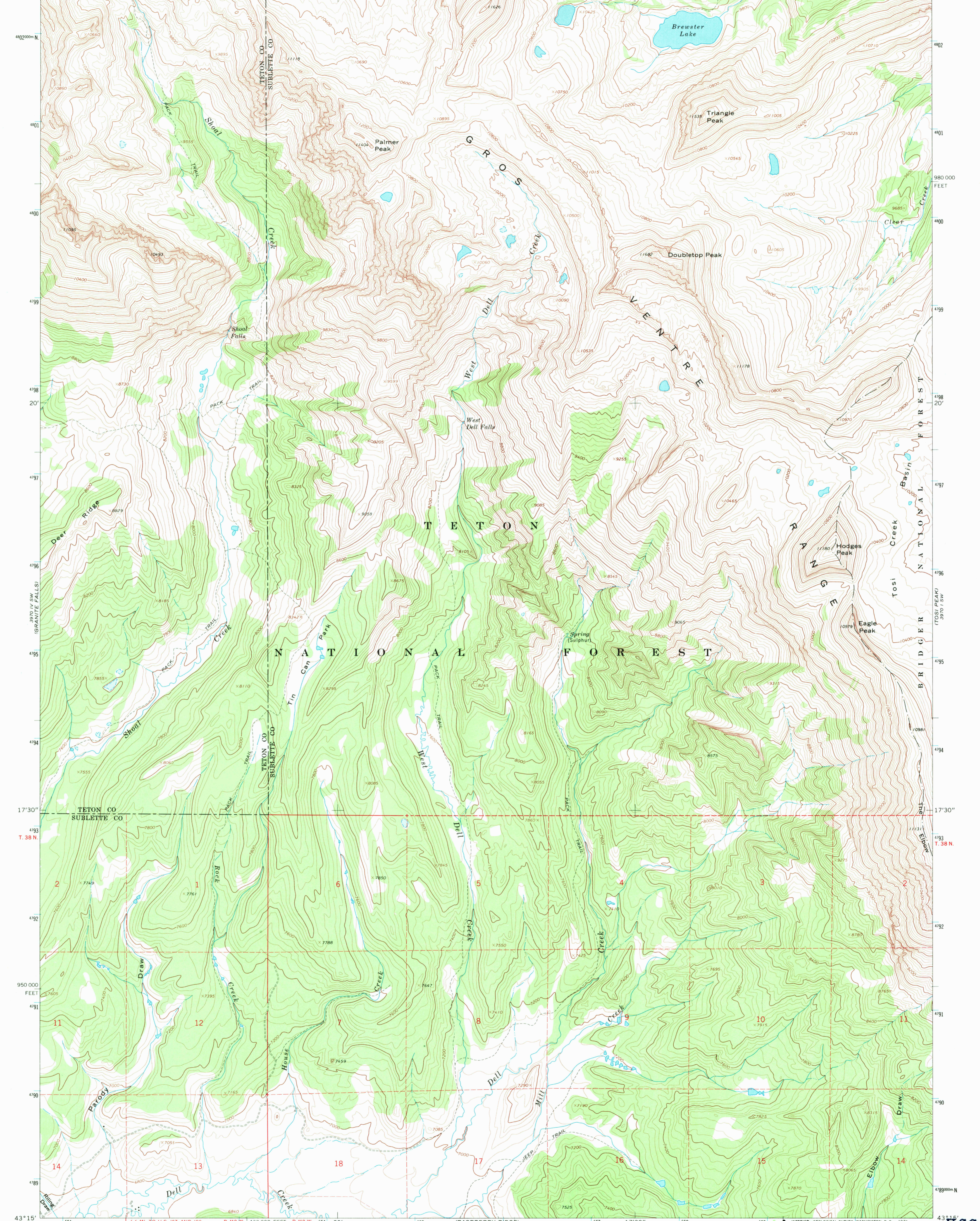
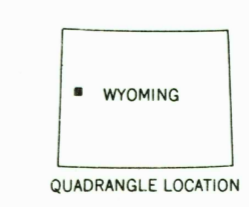
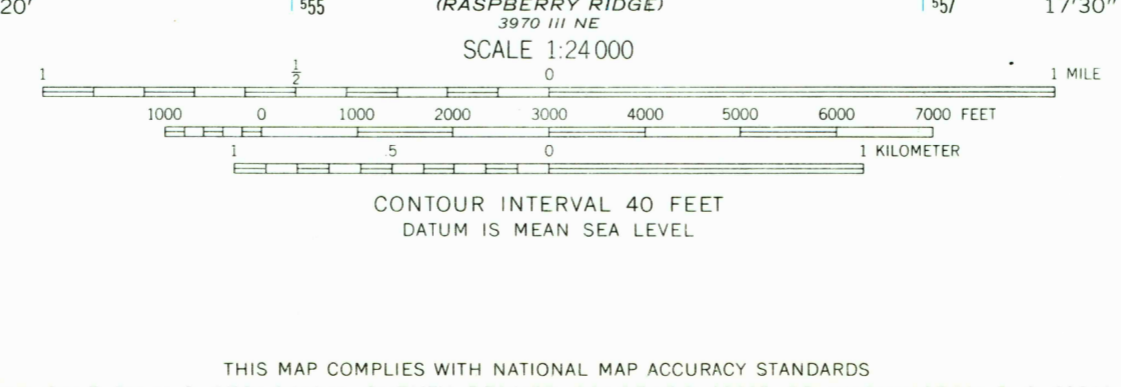
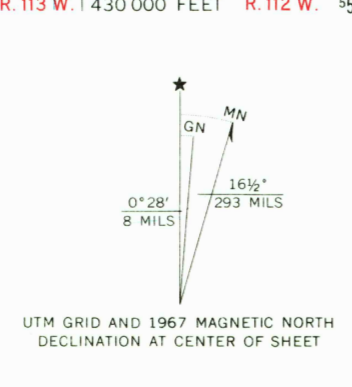


110°22'30" 51 55 59 60 17°30" 15' 43°22'30"



Maped, edited, and published by the Geological Survey  
Control by USGS and USC&GS  
Topography by photogrammetric methods from aerial  
photographs taken 1966. Field checked 1967  
Polyconic projection. 1927 North American datum  
10,000-foot grid based on Wyoming coordinate system,  
west zone  
1000-meter Universal Transverse Mercator grid ticks,  
zone 12, shown in blue  
Fine red dashed lines indicate selected fence lines  
Where omitted, land lines have not been established



DOUBLETOP PEAK, WYO.  
N4315—W11015/7.5  
1967  
AMS 3970 IV SE—SERIES V874

RETURN TO:  
USGS AND HISTORICAL MAP ARCHIVES

U.S.G.S.  
FILE COPY  
TOPOGRAPHIC DIVISION  
2270  
JAN 26 1971