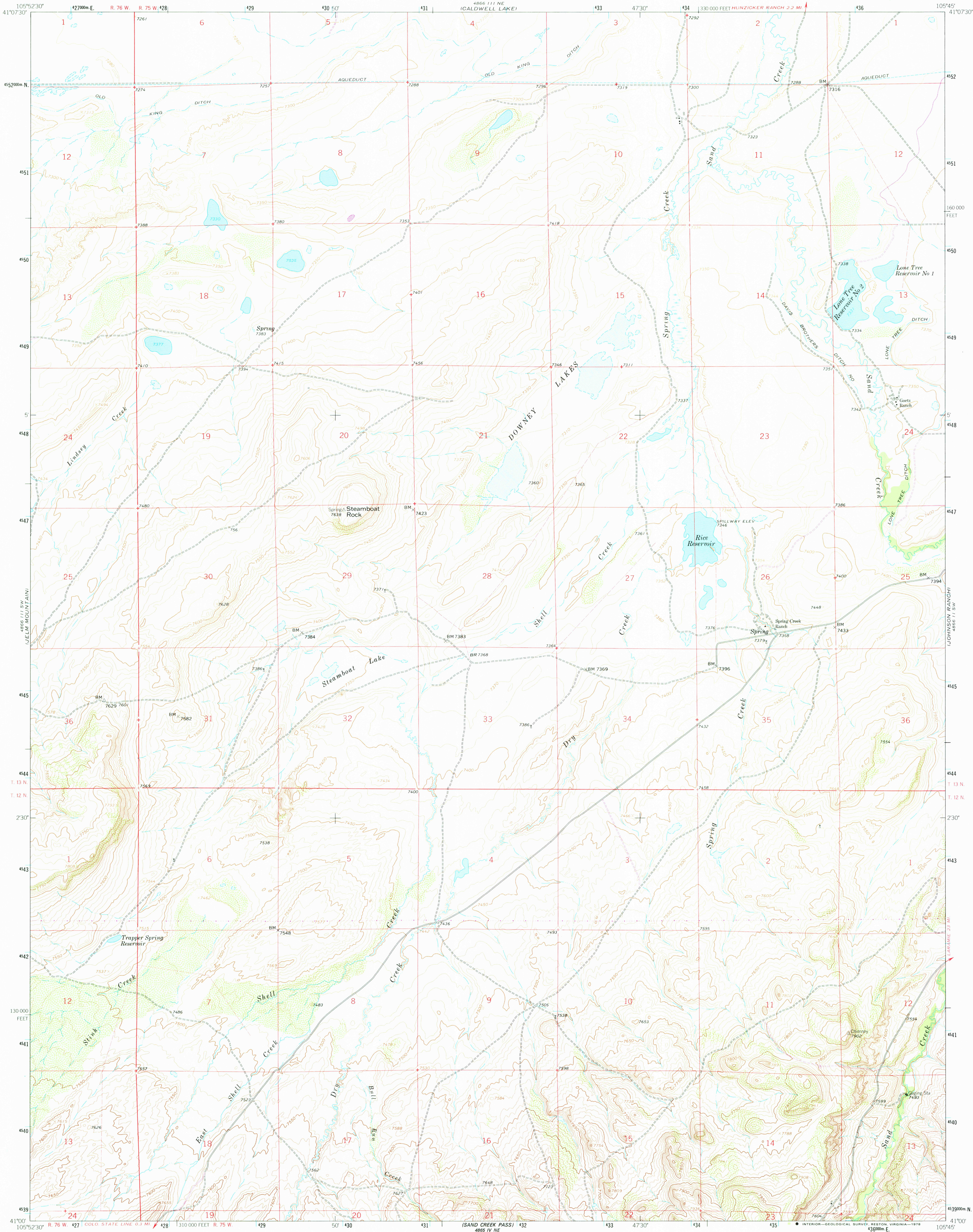
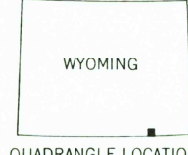
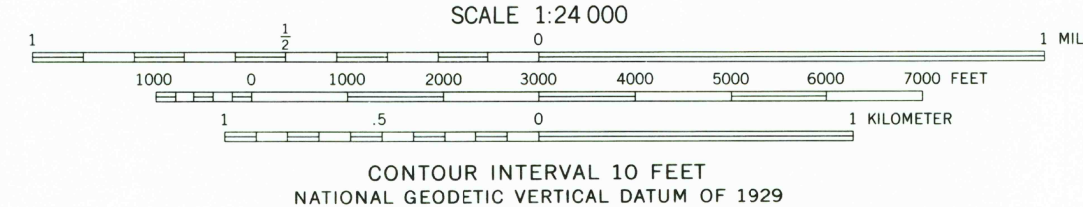
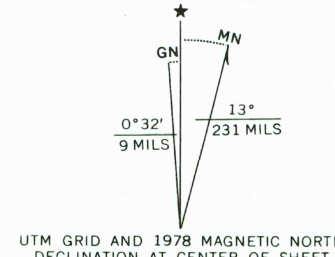


UNITED STATES
DEPARTMENT OF THE INTERIOR
GEOLOGICAL SURVEY

DOWNEY LAKES QUADRANGLE
WYOMING-ALBANY CO.
7.5 MINUTE SERIES (TOPOGRAPHIC)



Mapped, edited, and published by the Geological Survey as part of the Department of the Interior program for the development of the Missouri River Basin Control by USGS, NOS/NOAA and Wyoming Geodetic Survey Topography by photogrammetric methods from aerial photographs taken 1961. Field checked 1963 Polycyclic projection. 1927 North American datum 10,000-foot grid based on Wyoming coordinate system, east zone 1000-meter Universal Transverse Mercator grid ticks, zone 13, shown in blue Fine red dashed lines indicate selected fence lines Revisions shown in purple compiled from aerial photographs taken 1976. Map edited 1978. This information not field checked



ROAD CLASSIFICATION
Light-duty ————— Unimproved dirt —————

USGS
Historical File
Topographic Division

DOWNEY LAKES, WYO.
N4100-W10545/7.5
1963
PHOTOREVISED 1978
AMS 4866 III SE-SERIES V874

THIS MAP COMPLIES WITH NATIONAL MAP ACCURACY STANDARDS
FOR SALE BY U. S. GEOLOGICAL SURVEY, DENVER, COLORADO 80225, OR RESTON, VIRGINIA 22092
A FOLDER DESCRIBING TOPOGRAPHIC MAPS AND SYMBOLS IS AVAILABLE ON REQUEST

RETURN TO :
USGS NAT HISTORICAL MAP ARCHIVES

DEC 15 1978
2758