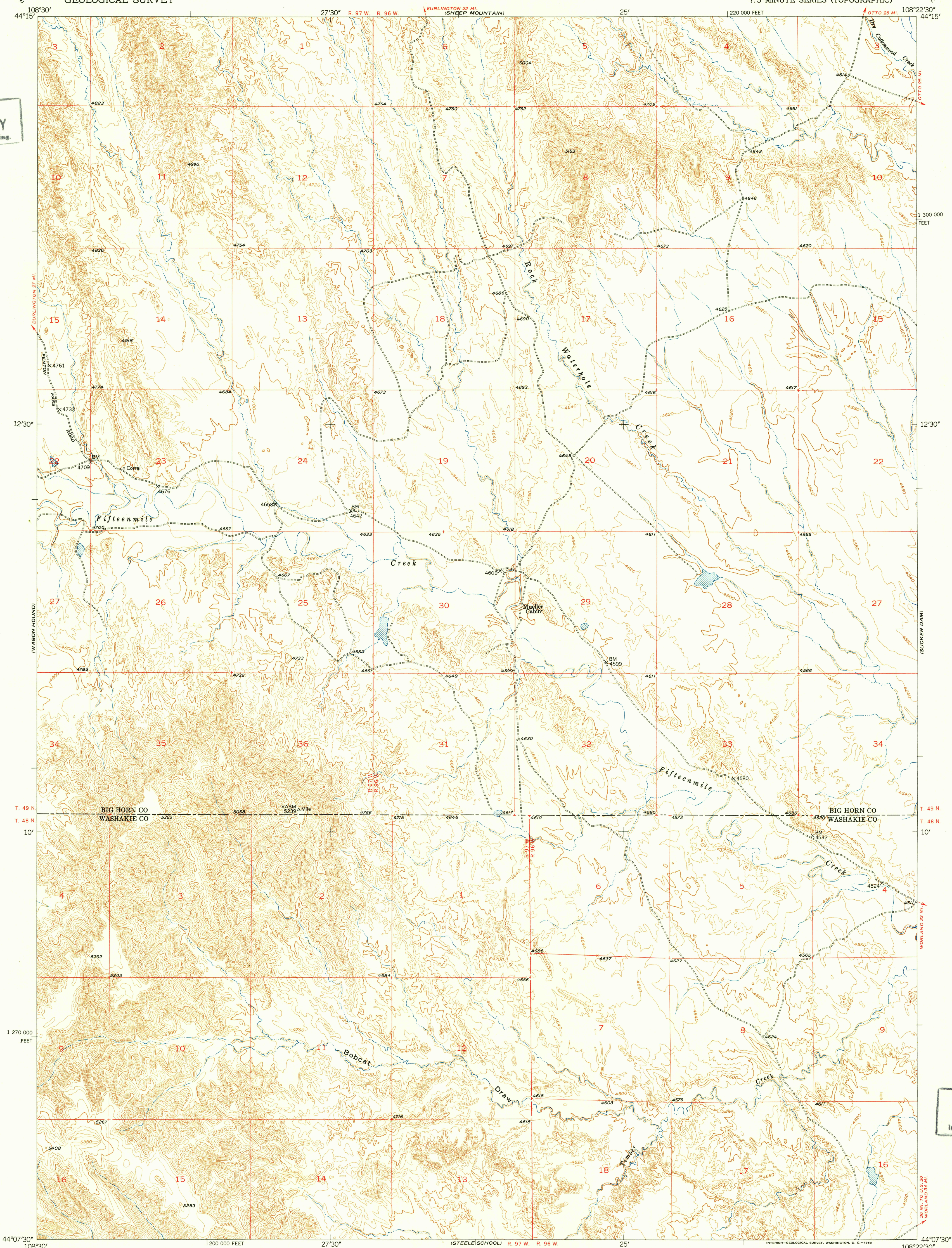
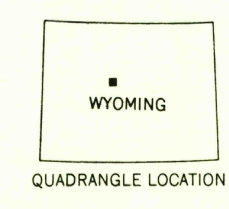
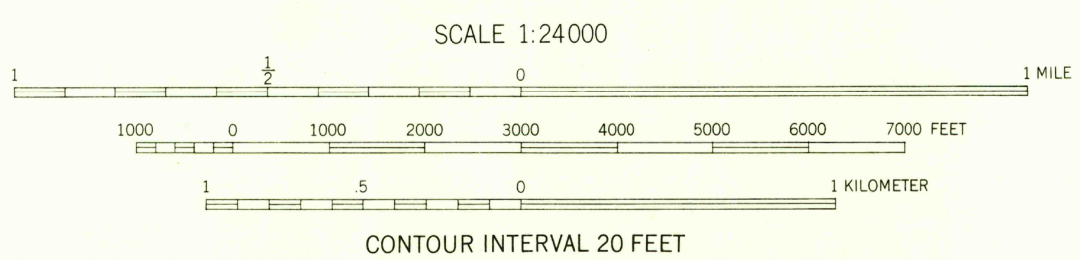
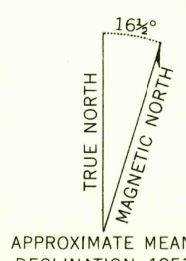


U. S. G. S.
FILE COPY
Impression and Printing.



Mapped, edited, and published by the Geological Survey as part of the Department of the Interior program for the development of the Missouri River Basin
Control by USGS and USC&GS
Topography from aerial photographs by multiplex methods
Aerial photographs taken 1949. Field check 1951
Polyconic projection. 1927 North American datum
10,000-foot grid based on Wyoming coordinate system east central zone



ROAD CLASSIFICATION

Heavy-duty	4 LANE (2 LANE)	Light-duty
Medium-duty	2 LANE (2 LANE)	Unimproved dirt
U. S. Route		State Route

DUTCH NICK FLAT NW, WYO.
N4407.5-W10822.5/7.5

1951

THIS MAP COMPLIES WITH NATIONAL MAP ACCURACY STANDARDS
FOR SALE BY U. S. GEOLOGICAL SURVEY, FEDERAL CENTER, DENVER, COLORADO OR WASHINGTON 25, D. C.
A FOLDER DESCRIBING TOPOGRAPHIC MAPS AND SYMBOLS IS AVAILABLE ON REQUEST

U. S. G. S.
FILE COPY
Impression and Printing.

MAR 2 1953