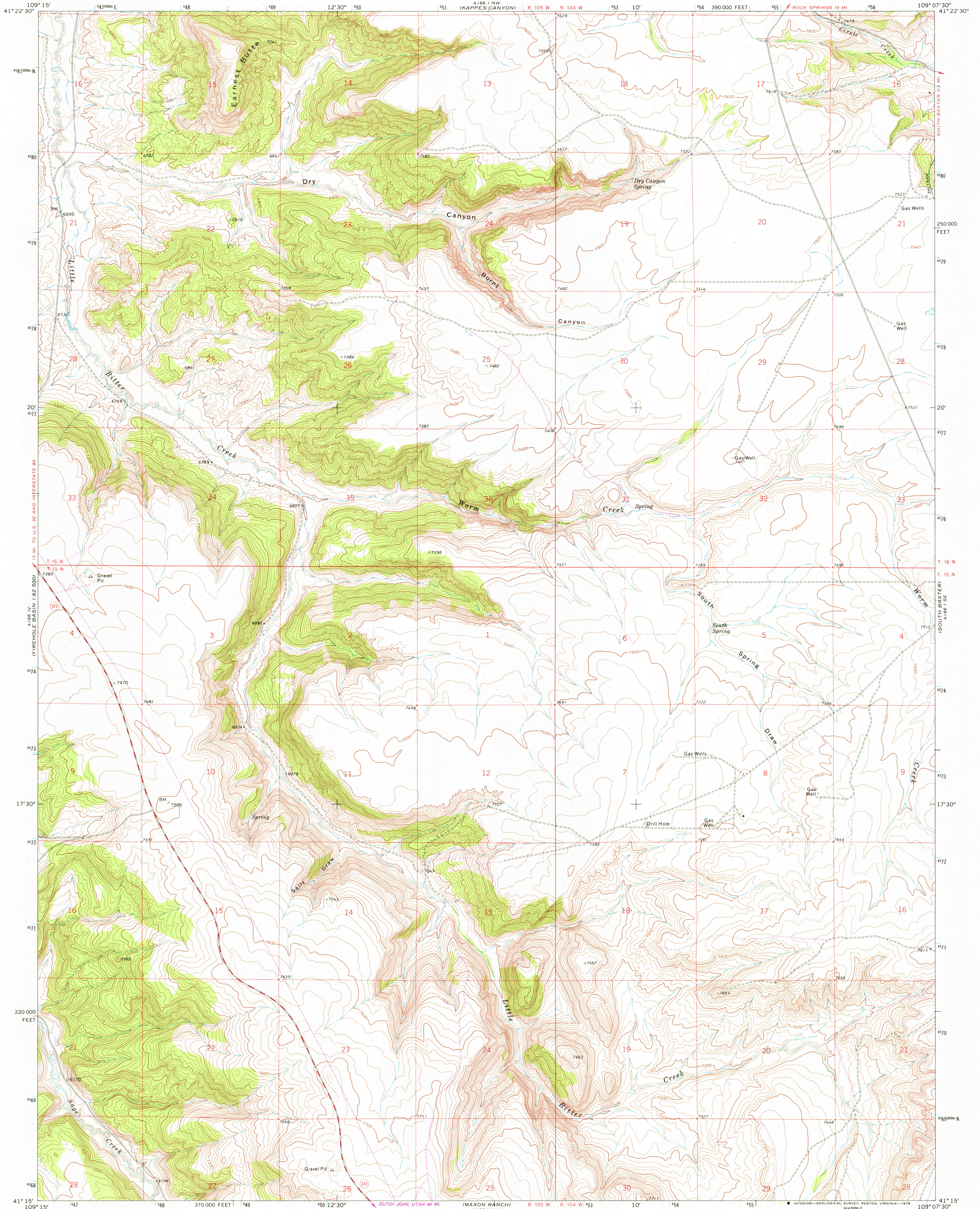
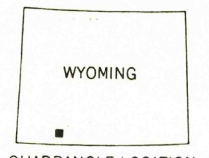
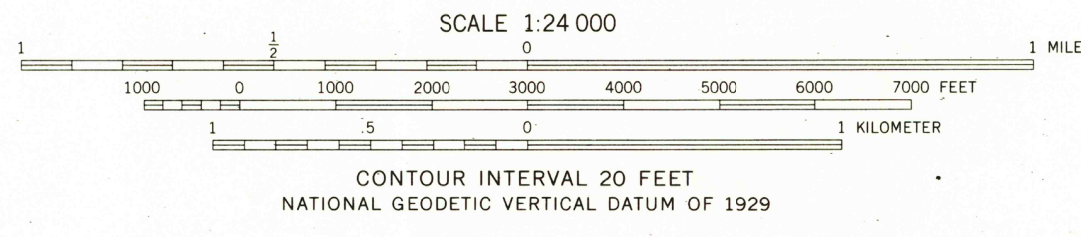
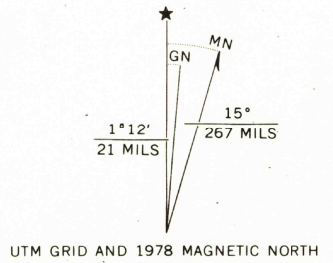


UNITED STATES
DEPARTMENT OF THE INTERIOR
GEOLOGICAL SURVEY

EARNEST BUTTE QUADRANGLE
WYOMING—SWEETWATER CO.
7.5 MINUTE SERIES (TOPOGRAPHIC)



Mapped, edited, and published by the Geological Survey
Control by USGS and NOS/NOAA
Topography by photogrammetric methods from aerial photographs taken 1967. Field checked 1968
Polyconic projection. 1927 North American datum
10,000-foot grid based on Wyoming coordinate system,
west central zone
1000-meter Universal Transverse Mercator grid ticks,
zone 12, shown in blue
Fine red dashed lines indicate selected fence lines
Revisions shown in purple compiled from aerial photographs taken
1976. Map edited 1978. This information not field checked



ROAD CLASSIFICATION
Secondary highway, all weather. Light-duty road, all weather,
hard surface. Improved surface.
Unimproved road, fair or dry
weather.
State Route

THIS MAP COMPLIES WITH NATIONAL MAP ACCURACY STANDARDS
FOR SALE BY U. S. GEOLOGICAL SURVEY, DENVER, COLORADO 80225, OR RESTON, VIRGINIA 22092
A FOLDER DESCRIBING TOPOGRAPHIC MAPS AND SYMBOLS IS AVAILABLE ON REQUEST

USGS
Historical File
Topographic Division

EARNEST BUTTE, WYO.
N4115-W10907.5/7.5
1968
PHOTOREVISED 1978
AMS 4166 I SW—SERIES V874

MAR 16 1979

RETURN TO:
USGS AND HISTORICAL MAP ARCHIVES

UTTSWORTH ROAD

210