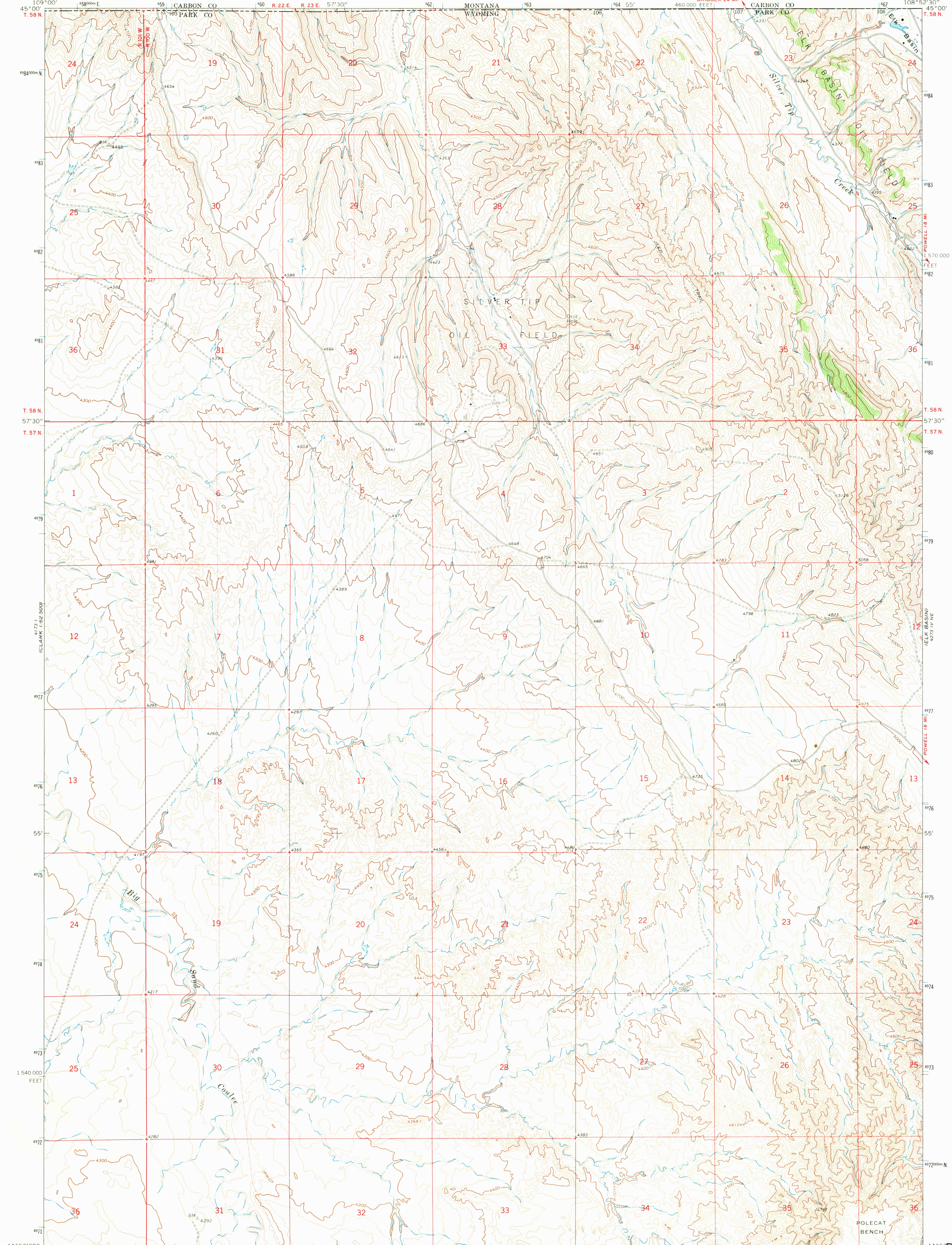


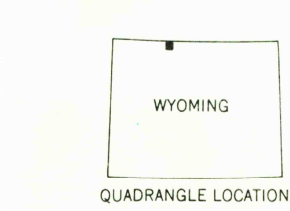
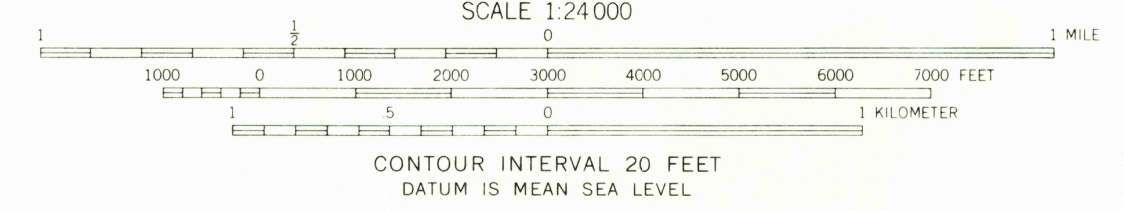
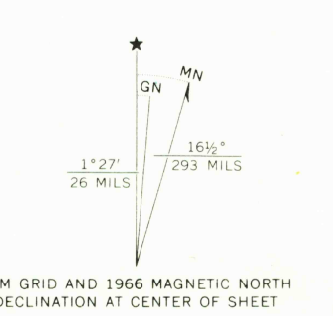
UNITED STATES
DEPARTMENT OF THE INTERIOR
GEOLOGICAL SURVEY

ELK BASIN NW QUADRANGLE
WYOMING
7.5 MINUTE SERIES (TOPOGRAPHIC)

1:250,000
RED LOGGE
1:62,500



Mapped, edited, and published by the Geological Survey
Control by USGS and USC&GS
Topography by photogrammetric methods from aerial
photographs taken 1965. Field checked 1966
Polyconic projection. 1927 North American datum
10,000-foot grid based on Wyoming coordinate system,
west central zone
1000-meter Universal Transverse Mercator grid ticks,
zone 12, shown in blue
Fine red dashed lines indicate selectec fence lines



ROAD CLASSIFICATION
Light-duty ——— Unimproved dirt - - - - -

THIS MAP COMPLIES WITH NATIONAL MAP ACCURACY STANDARDS
FOR SALE BY U. S. GEOLOGICAL SURVEY, DENVER, COLORADO 80225, OR WASHINGTON, D. C. 20242
A FOLDER DESCRIBING TOPOGRAPHIC MAPS AND SYMBOLS IS AVAILABLE ON REQUEST

ELK BASIN NW, WYO.
N4452 5-W10852 5/7.5
1966
AMS 4273 IV NW-SERIES V874

RETURN TO:
USGS AND HISTORICAL MAP ARCHIVES
U.S.G.S.
FILE COPY
TOPOGRAPHIC DIVISION

2290
JAN 23 1970