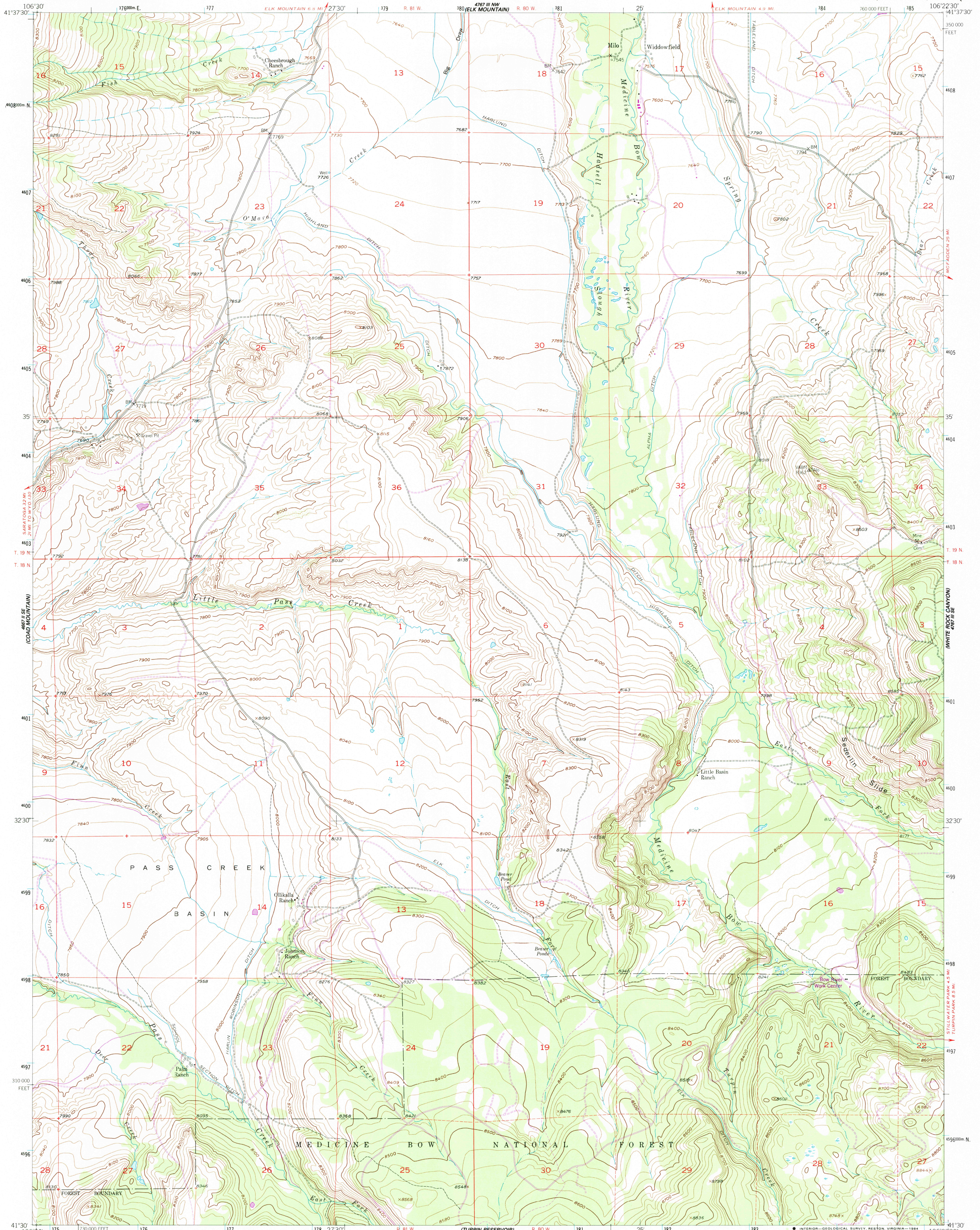
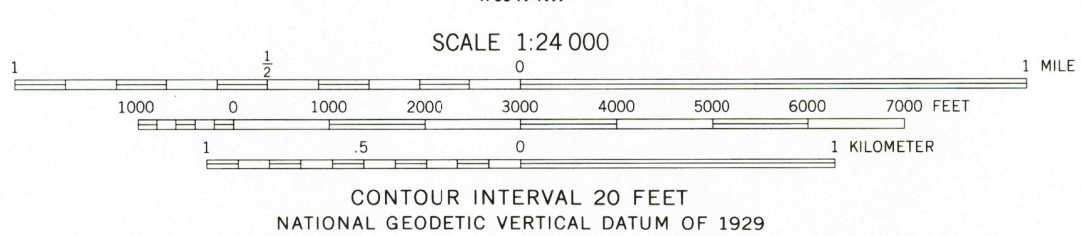
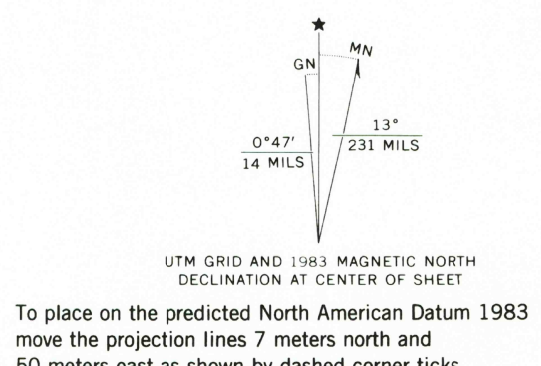


UNITED STATES
DEPARTMENT OF THE INTERIOR
GEOLOGICAL SURVEY

ELK MOUNTAIN SW QUADRANGLE
WYOMING-CARBON CO.
7.5 MINUTE SERIES (TOPOGRAPHIC)

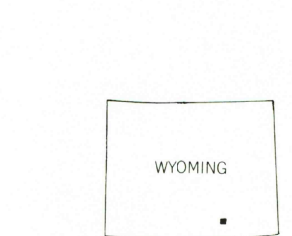


Mapped, edited, and published by the Geological Survey as part of the Department of the Interior program for the development of the Missouri River Basin Control by USGS and NOS/NOAA
Topography from aerial photographs by multiplex methods
Aerial photographs taken 1952. Field check 1955
Polyconic projection, 1927 North American Datum
10,000-foot grid based on Wyoming coordinate system, east central zone
Dashed land lines indicate approximate locations
Unchecked elevations are shown in brown
1000-meter Universal Transverse Mercator grid ticks, zone 13, shown in blue



CONTOUR INTERVAL 20 FEET
NATIONAL GEODETIC VERTICAL DATUM OF 1929

THIS MAP COMPLIES WITH NATIONAL MAP ACCURACY STANDARDS
FOR SALE BY U.S. GEOLOGICAL SURVEY, DENVER, COLORADO 80225, OR RESTON, VIRGINIA 22092
A FOLDER DESCRIBING TOPOGRAPHIC MAPS AND SYMBOLS IS AVAILABLE ON REQUEST



ROAD CLASSIFICATION
Light-duty ——— Unimproved dirt ———

ELK MOUNTAIN SW, WYO.
41106-E4-TF-024
1955
PHOTOREVISED 1983
DMA 4767 III SW-SERIES 8874

There may be private inholdings within the boundaries of the National or State reservations shown on this map
Revisions shown in purple and woodland compiled from aerial photographs taken 1980 and other source data
Partial field check by U.S. Forest Service. Map edited 1983

RETURN TO:
USGS AND HISTORICAL MAP ARCHIVES