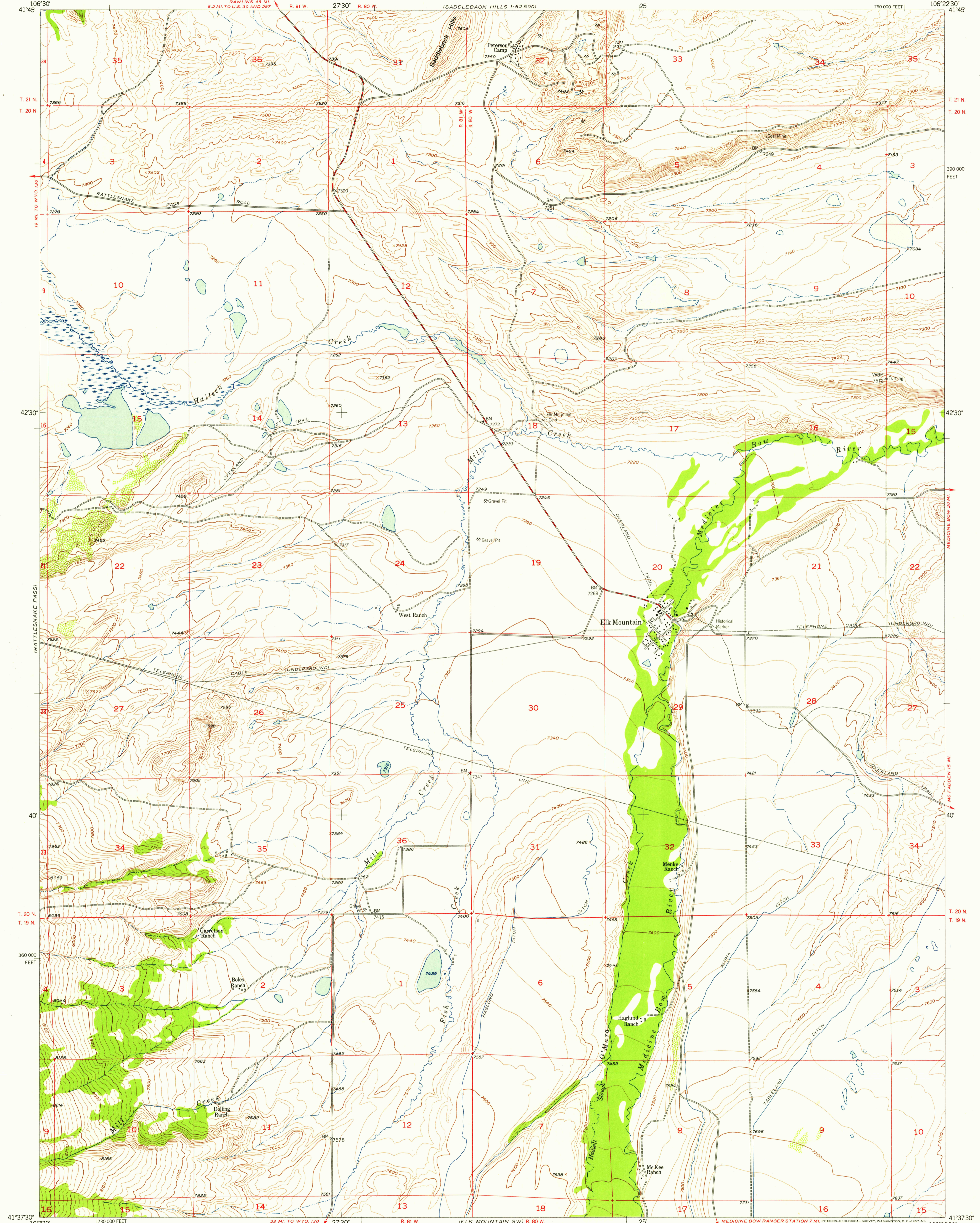


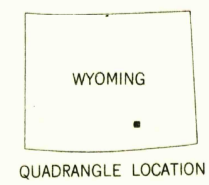
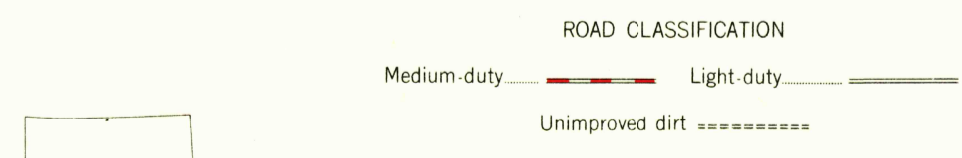
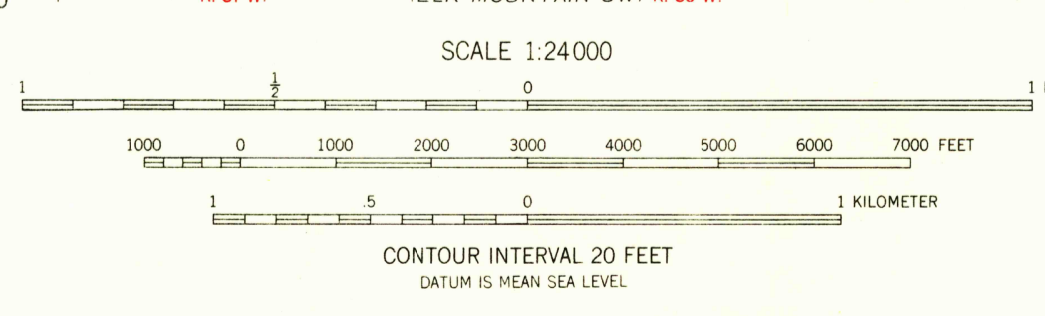
1:62,500

1:62,500
SADDLEBACK HILLS



Mapped, edited, and published by the Geological Survey as part of the Department of the Interior program for the development of the Missouri River Basin
Control by USGS and USC&GS
Topography from aerial photographs by multiplex methods and by planetable surveys 1955. Aerial photographs taken 1952
Polyconic projection. 1927 North American datum
10,000-foot grid based on Wyoming coordinate system, east central zone
Dashed land lines indicate approximate locations
Unchecked elevations are shown in brown

TRUE NORTH
MAGNETIC NORTH
APPROXIMATE MEAN DECLINATION, 1955



THIS MAP COMPLIES WITH NATIONAL MAP ACCURACY STANDARDS
FOR SALE BY U.S. GEOLOGICAL SURVEY, DENVER 2, COLORADO OR WASHINGTON 25, D.C.
A FOLDER DESCRIBING TOPOGRAPHIC MAPS AND SYMBOLS IS AVAILABLE ON REQUEST

U.S.G.S. FILE COPY
TOPOGRAPHIC DIVISION
ELK MOUNTAIN, WYO.
N4137.5-W10622.5/7.5
1955

RETURN TO:
USGS AND HISTORICAL MAP ARCHIVES

MAY 23 1957
2075