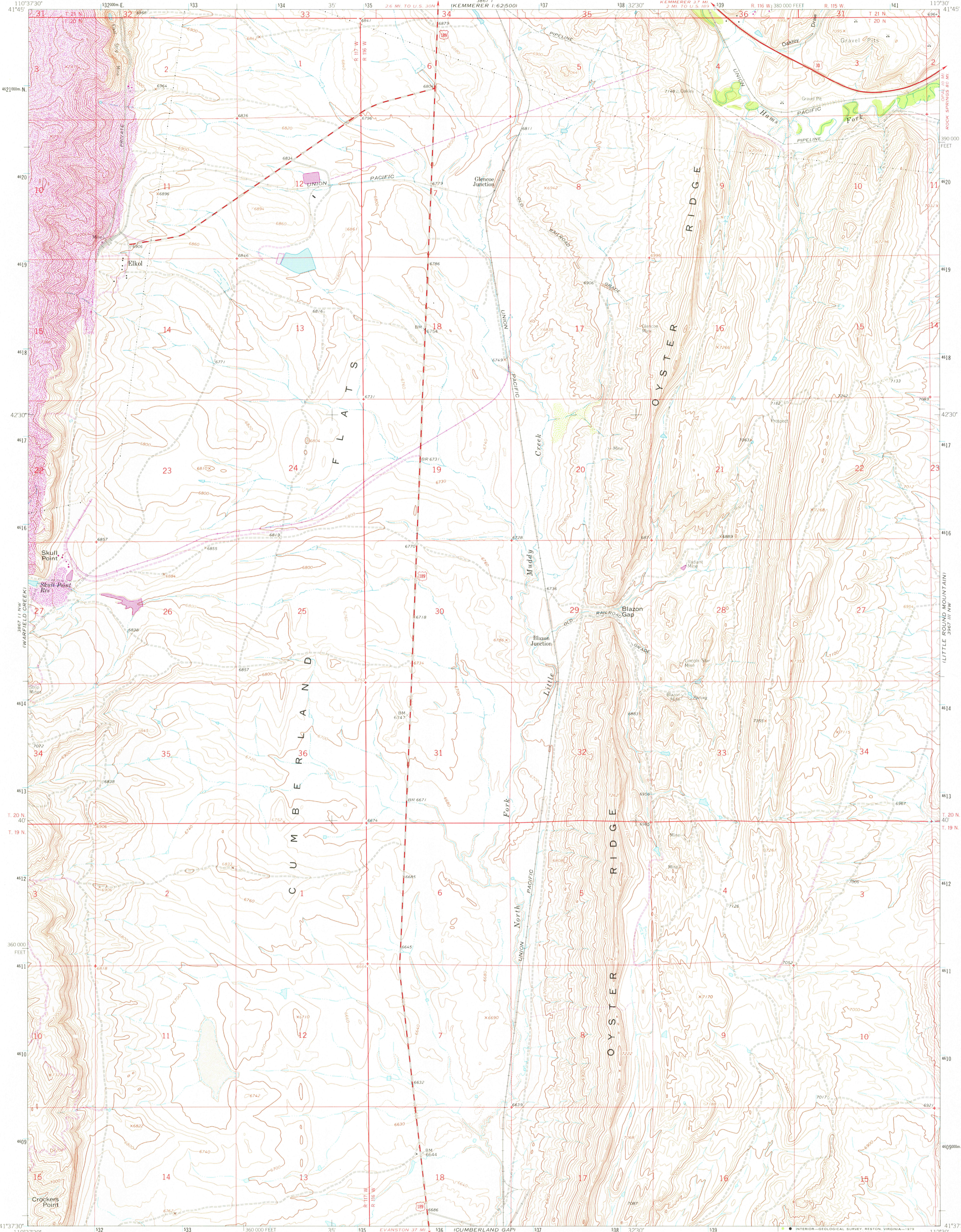


UNITED STATES
DEPARTMENT OF THE INTERIOR
GEOLOGICAL SURVEY



ELKOL QUADRANGLE
WYOMING-LINCOLN CO.
7.5 MINUTE SERIES (TOPOGRAPHIC)



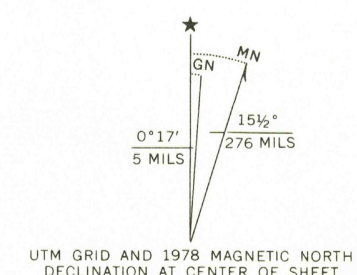
Mapped, edited, and published by the Geological Survey

Control by USGS and NOS/NOAA

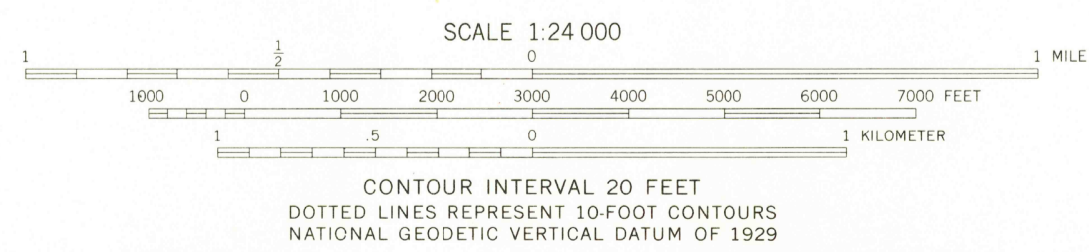
Topography by photogrammetric methods from aerial photographs taken 1961. Field checked 1962

Polyconic projection. 1927 North American datum
10,000-foot grid based on Wyoming coordinate system, west zone
1000-meter Universal Transverse Mercator grid ticks,
zone 12, shown in blue

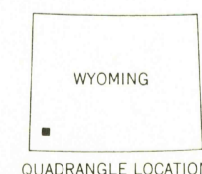
Revisions shown in purple compiled from aerial photographs
taken 1976 and other source data. This information not
field checked. Map edited 1978



UTM GRID AND 1978 MAGNETIC NORTH
DECLINATION AT CENTER OF SHEET



CONTOUR INTERVAL 20 FEET
DOTTED LINES REPRESENT 10-FOOT CONTOURS
NATIONAL GEODETIC VERTICAL DATUM OF 1929



ROAD CLASSIFICATION	
Heavy-duty	Light-duty
Medium-duty	Unimproved dirt
U.S. Route	

THIS MAP COMPLIES WITH NATIONAL MAP ACCURACY STANDARDS
FOR SALE BY U. S. GEOLOGICAL SURVEY, DENVER, COLORADO 80225, OR RESTON, VIRGINIA 22092
A FOLDER DESCRIBING TOPOGRAPHIC MAPS AND SYMBOLS IS AVAILABLE ON REQUEST

USGS
Historical File
Topographic Division

ELKOL, WYO.
N4137 5-W11030/7 5
1962
PHOTOREVISED 1978
AMS 5867 11 NE-SERIES V874

APR 26 1979

2350

RETURN TO:
USGS AND HISTORICAL MAP ARCHIVES

MULLAY SPRING
3997 1/4 SW

3967 1/4 SW
WILLOW SPRINGS

ELKOL SW
3967 1/4 SW