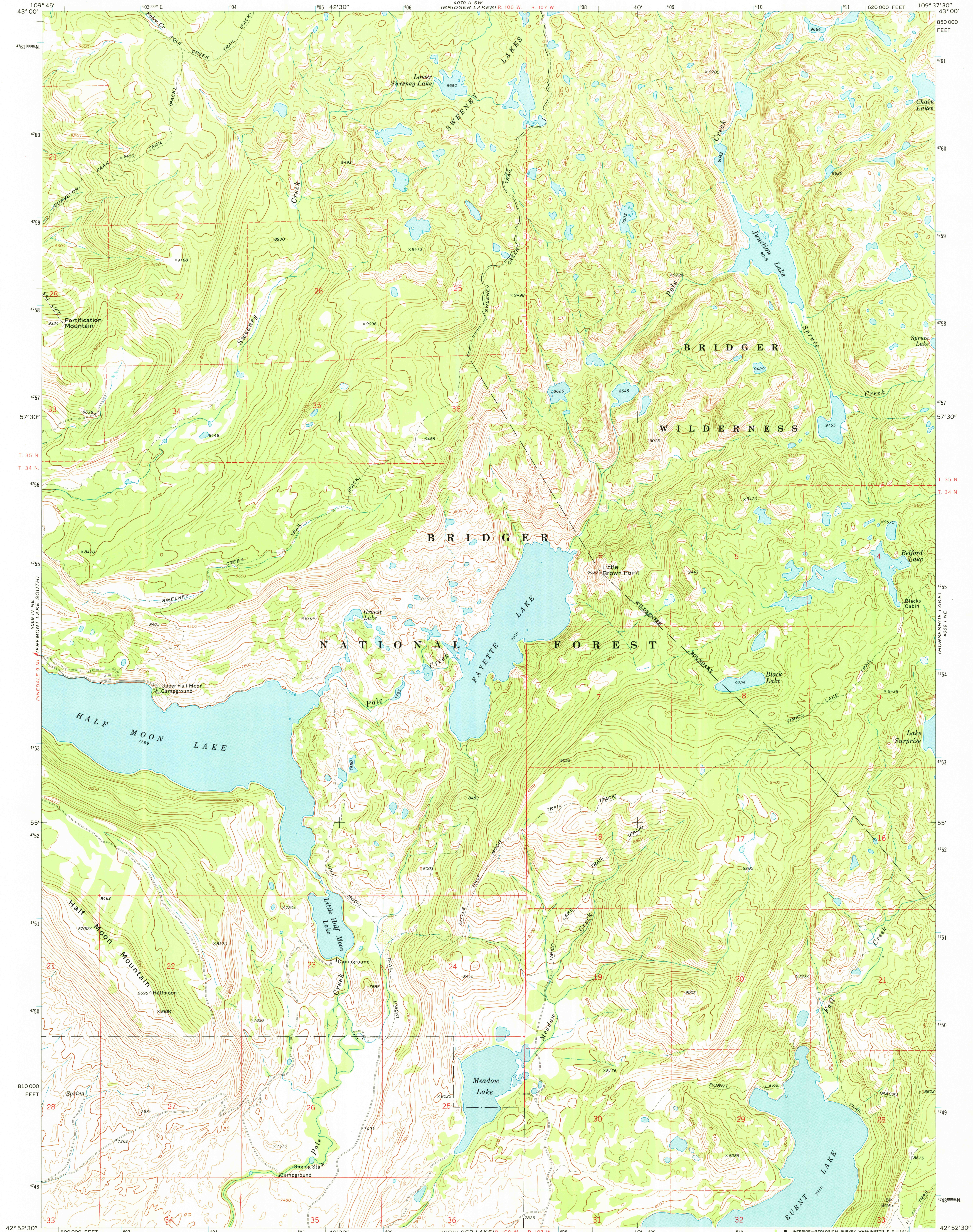
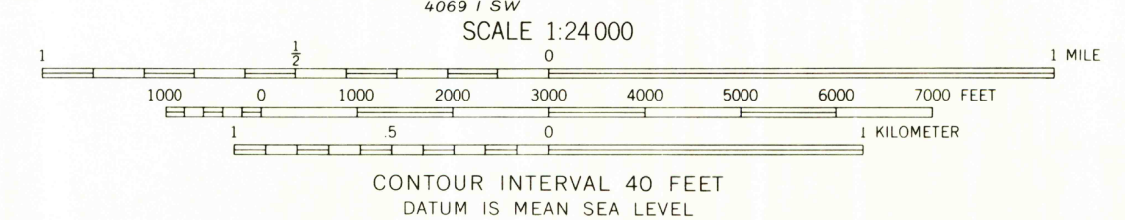
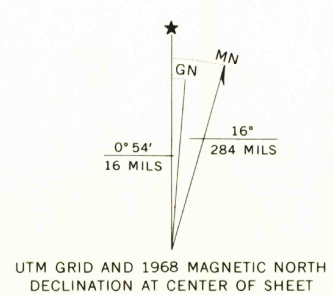


UNITED STATES
DEPARTMENT OF THE INTERIOR
GEOLOGICAL SURVEY

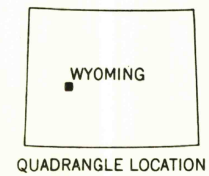
FAYETTE LAKE QUADRANGLE
WYOMING—SUBLETTE CO.
7.5 MINUTE SERIES (TOPOGRAPHIC)



Mapped, edited, and published by the Geological Survey
Control by USGS and USC&GS
Topography by photogrammetric methods from aerial photographs taken 1963. Field checked 1968
Polyconic projection. 1927 North American datum
10,000-foot grid based on Wyoming coordinate system, west zone
1000-meter Universal Transverse Mercator grid ticks, zone 12, shown in blue
Where omitted, land lines have not been established



CONTOUR INTERVAL 40 FEET
DATUM IS MEAN SEA LEVEL



ROAD CLASSIFICATION

Primary highway, hard surface	Light-duty road, hard or improved surface
Secondary highway, hard surface	Unimproved road
Interstate Route	U. S. Route
	State Route

THIS MAP COMPLIES WITH NATIONAL MAP ACCURACY STANDARDS
FOR SALE BY U. S. GEOLOGICAL SURVEY, DENVER, COLORADO 80225, OR WASHINGTON, D. C. 20242
A FOLDER DESCRIBING TOPOGRAPHIC MAPS AND SYMBOLS IS AVAILABLE ON REQUEST

FAYETTE LAKE, WYO.
N4252.5—W10937.5/7.5
1968
AMS 4069 1 NW—SERIES V874

NOV 13 1972
3340

RETURN TO:
USGS AND HISTORICAL MAP ARCHIVES