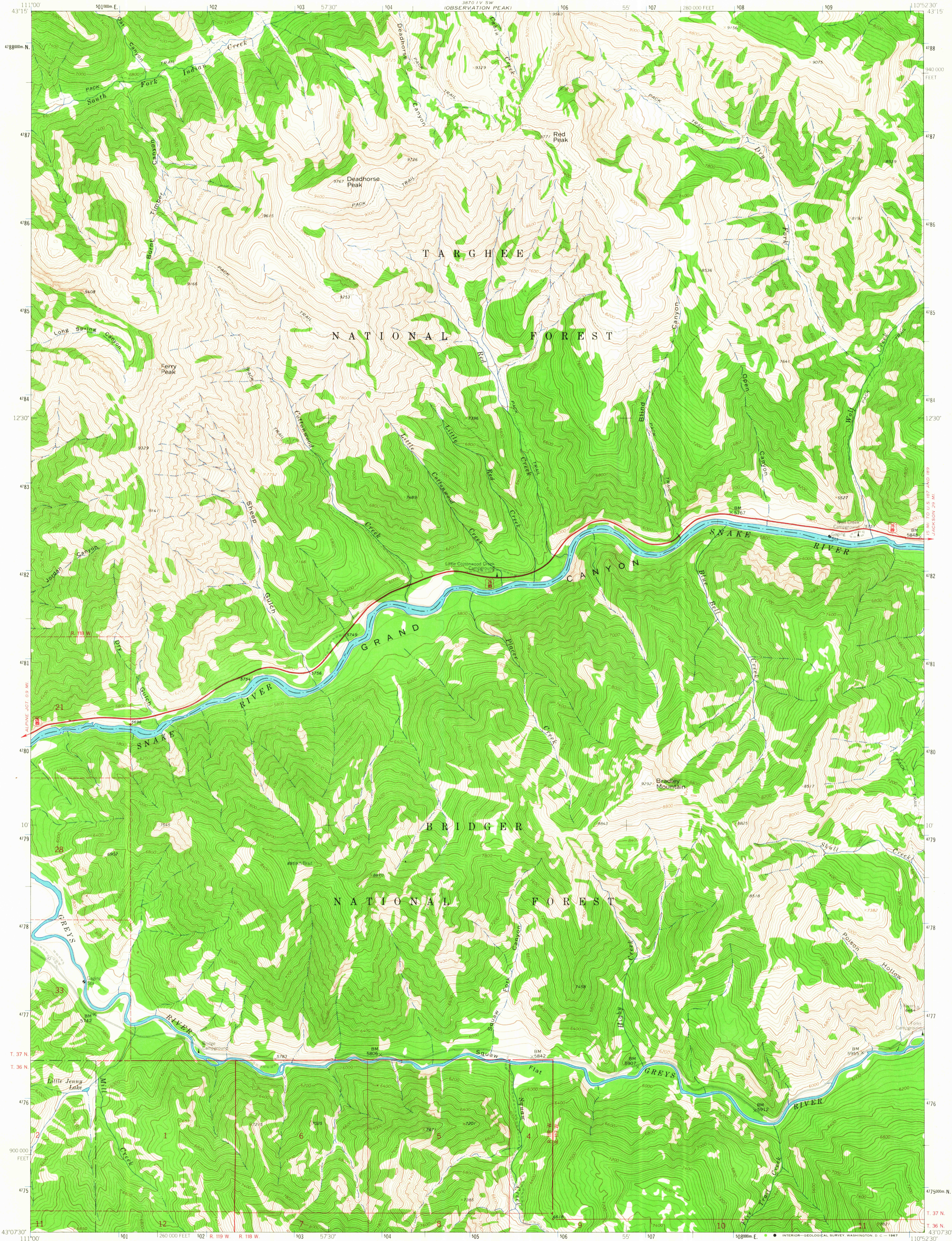
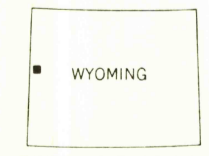
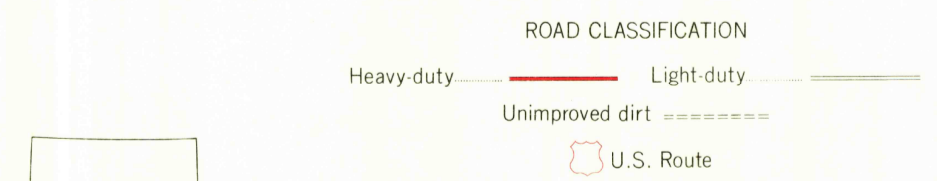
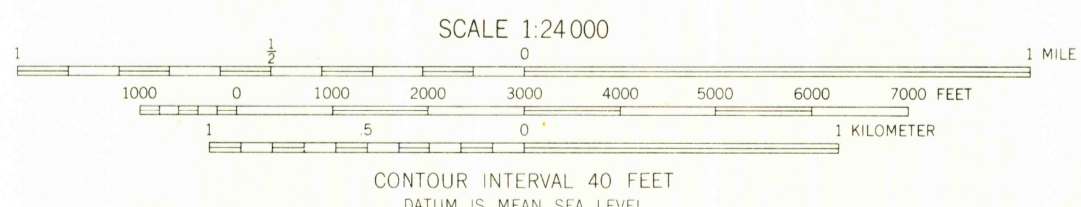
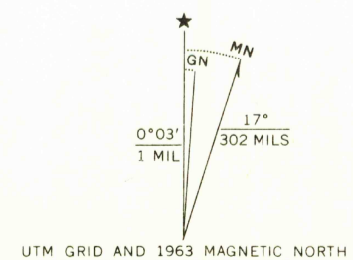


RETURN TO:  
USGS MAP HISTORICAL MAP ARCHIVES



Mapped, edited, and published by the Geological Survey  
Control by USGS and USC&GS  
Topography by photogrammetric methods from aerial photographs taken 1962. Field checked 1963.  
Polyconic projection 1927 North American datum 10,000-foot grid based on Wyoming coordinate system, west zone 1000-meter Universal Transverse Mercator grid ticks, zone 12, shown in blue  
Where omitted, land lines have not been established



THIS MAP COMPLIES WITH NATIONAL MAP ACCURACY STANDARDS  
FOR SALE BY U.S. GEOLOGICAL SURVEY, DENVER, COLORADO 80225, OR WASHINGTON, D.C. 20242  
A FOLDER DESCRIBING TOPOGRAPHIC MAPS AND SYMBOLS IS AVAILABLE ON REQUEST

U.S.G.S. FERRY PEAK, WYO.  
N4307.5-W11052.5/7.5  
1963  
TOPOGRAPHIC DIVISION

2530  
APR 17 1967