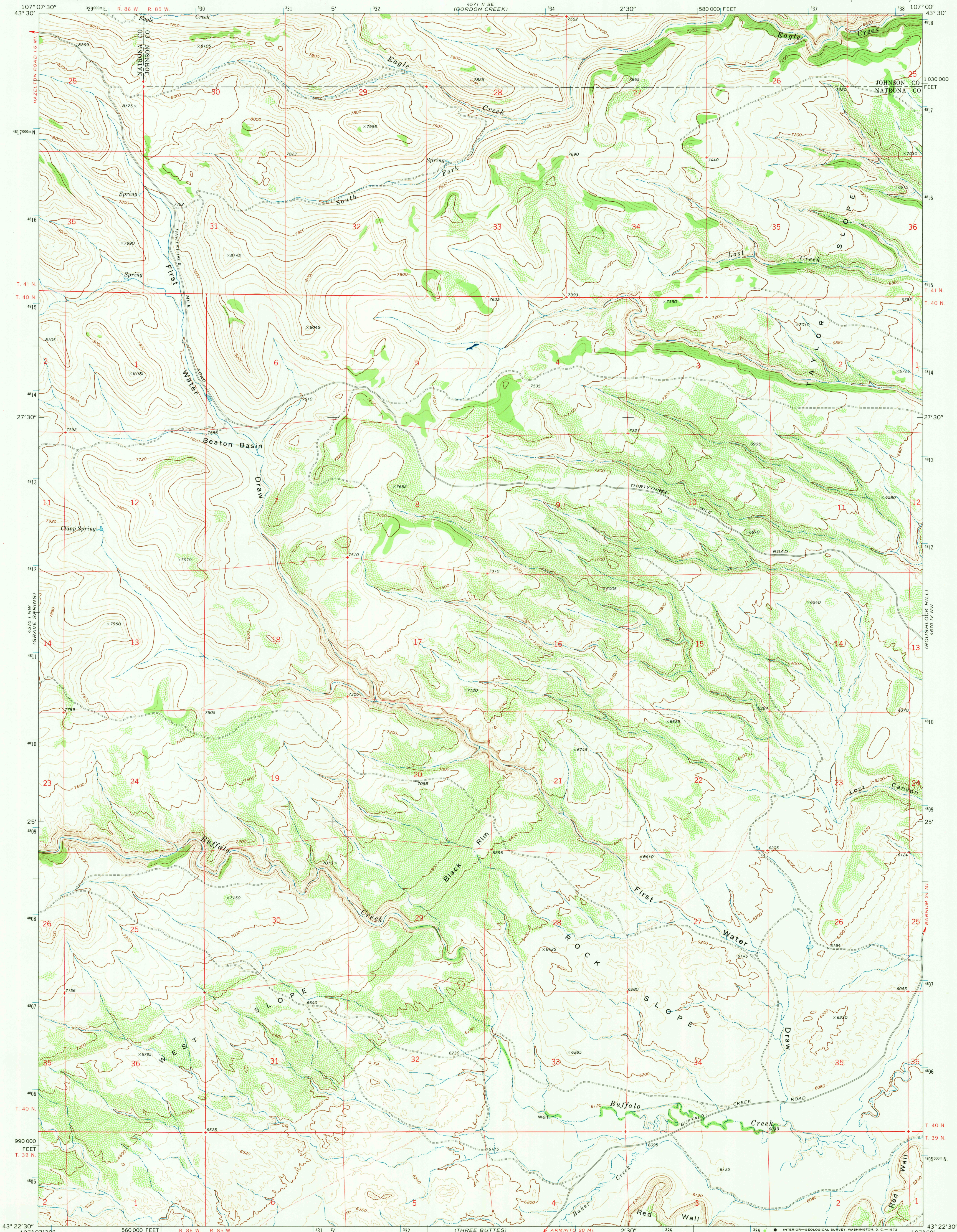


UNITED STATES  
DEPARTMENT OF THE INTERIOR  
GEOLOGICAL SURVEY

FIRST WATER DRAW QUADRANGLE  
WYOMING  
7.5 MINUTE SERIES (TOPOGRAPHIC)



Mapped, edited, and published by the Geological Survey

Control by USGS and USC&GS

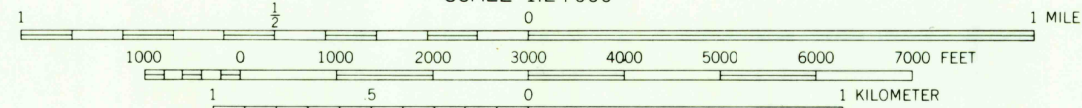
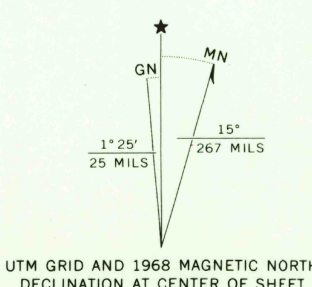
Topography by photogrammetric methods from aerial photographs taken 1967. Field checked 1968

Polyconic projection. 1927 North American datum

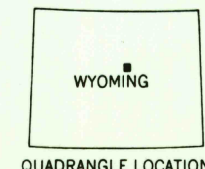
10,000-foot grid based on Wyoming coordinate system, east central zone

1000-meter Universal Transverse Mercator grid ticks, zone 13, shown in blue

Fine red dashed lines indicate selected fence lines



CONTOUR INTERVAL 40 FEET  
DATUM IS MEAN SEA LEVEL



ROAD CLASSIFICATION  
Light duty road, all weather, Unimproved road, fair or dry weather  
improved surface, improved weather

THIS MAP COMPLIES WITH NATIONAL MAP ACCURACY STANDARDS  
FOR SALE BY U. S. GEOLOGICAL SURVEY, DENVER, COLORADO 80225, OR WASHINGTON, D. C. 20242  
A FOLDER DESCRIBING TOPOGRAPHIC MAPS AND SYMBOLS IS AVAILABLE ON REQUEST

FIRST WATER DRAW, WYO.

N4322.5-W10700/7.5

1968

AMS 4570 1 NE-SERIES 8784

SEP 20 1972

USGS  
HISTORICAL FILE  
TOPOGRAPHIC DIVISION

RETURN TO:  
USGS AND HISTORICAL MAP ARCHIVES