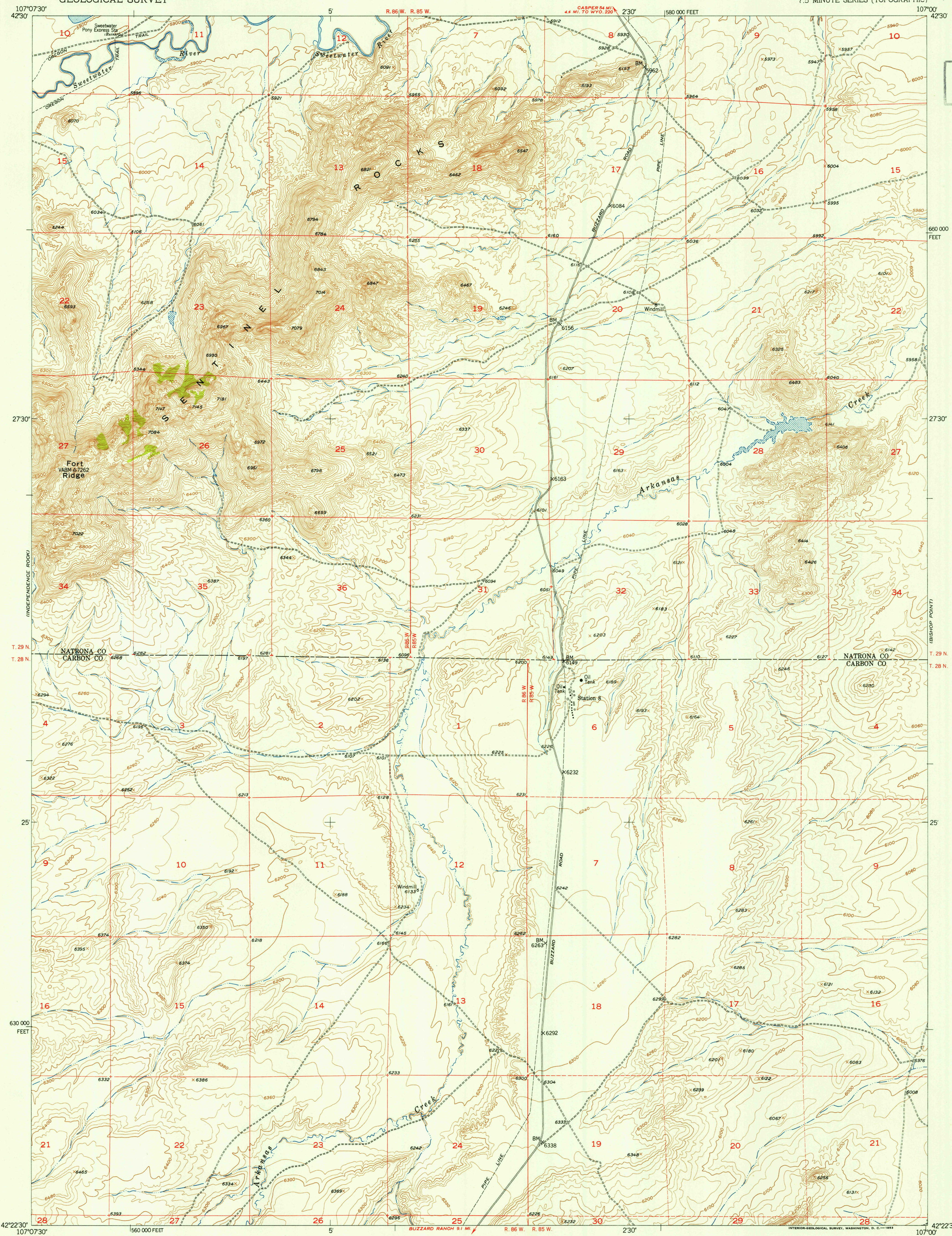
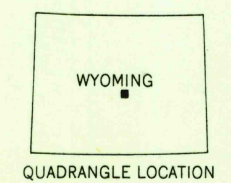
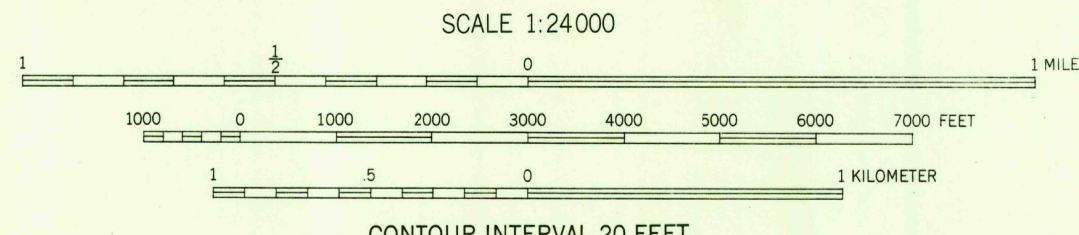
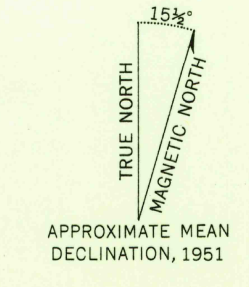


U.S.G.S.
FILE COPY
Inception and Editing



Mapped, edited, and published by the Geological Survey as part of the Department of the Interior program for the development of the Missouri River Basin. Control by USGS and USC&GS. Topography from aerial photographs by multiplex methods. Aerial photographs taken 1946 and 1947. Field check 1951. Polyconic projection. 1927 North American datum. 10,000-foot grid based on Wyoming coordinate system, east central zone. Dashed land lines indicate approximate locations.



ROAD CLASSIFICATION

Heavy-duty	4 LANE, 6 LANE	Light-duty	2 LANE, 4 LANE
Medium-duty	4 LANE, 6 LANE	Unimproved dirt	-----
U.S. Route	○	State Route	○

FORT RIDGE, WYO.
N4222.5-W10700/7.5
1951

THIS MAP COMPLIES WITH NATIONAL MAP ACCURACY STANDARDS
FOR SALE BY U. S. GEOLOGICAL SURVEY, FEDERAL CENTER, DENVER, COLORADO OR WASHINGTON 25, D. C.
A FOLDER DESCRIBING TOPOGRAPHIC MAPS AND SYMBOLS IS AVAILABLE ON REQUEST

RETURN TO: USGS AND HISTORICAL MAP ARCHIVES

U.S.G.S.
FILE COPY
Inception and Editing

MAR 10 1953