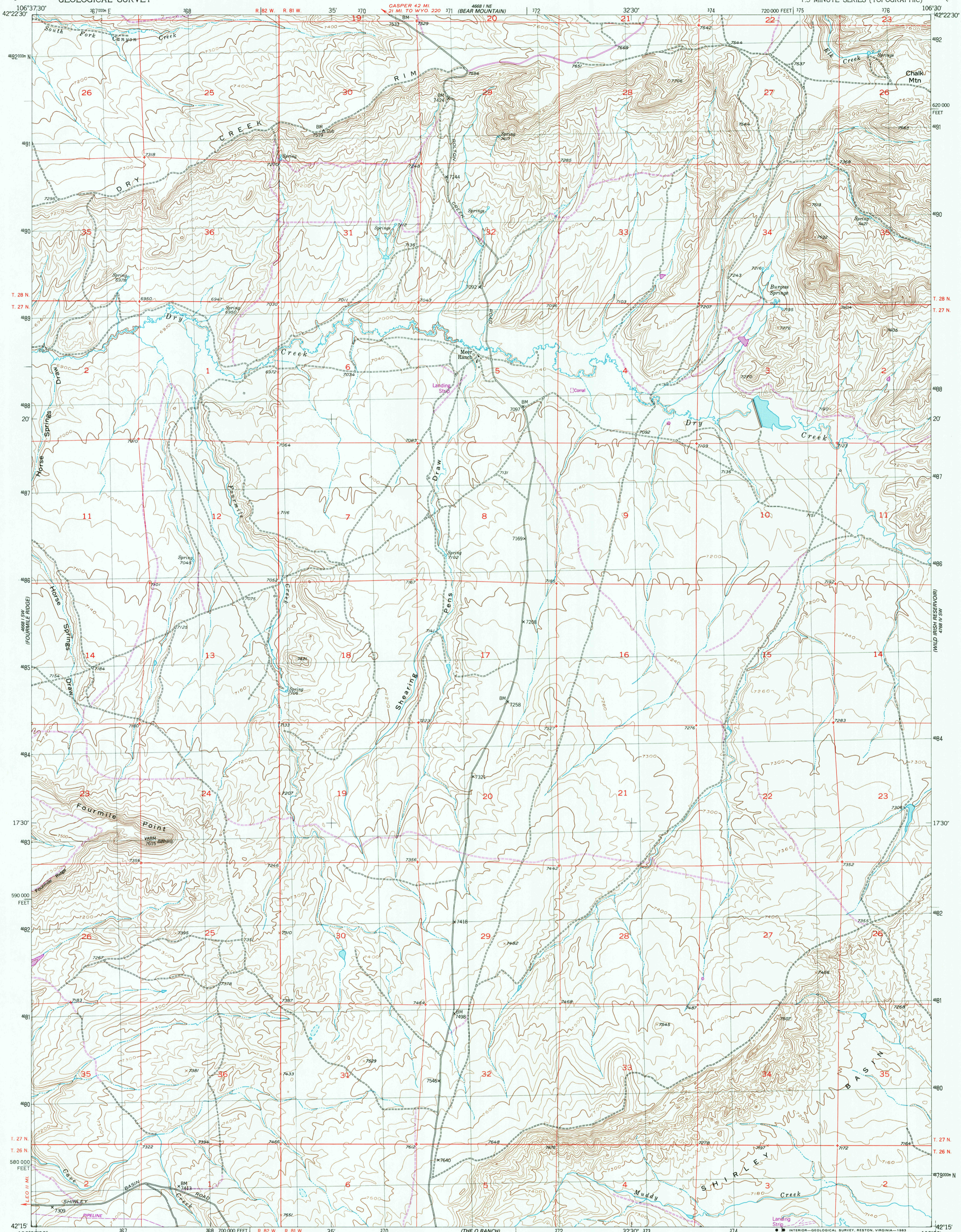


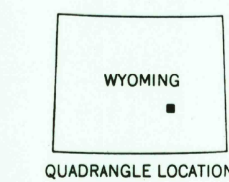
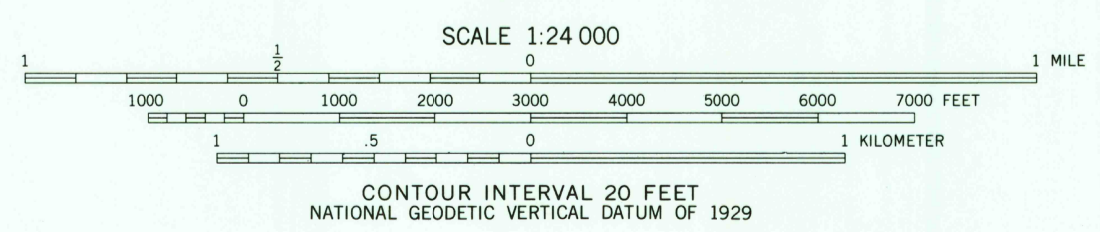
UNITED STATES  
DEPARTMENT OF THE INTERIOR  
GEOLOGICAL SURVEY

FOURMILE POINT QUADRANGLE  
WYOMING-CARBON CO.  
7.5 MINUTE SERIES (TOPOGRAPHIC)



Mapped, edited, and published by the Geological Survey as part of the Department of the Interior program for the development of the Missouri River Basin. Control by USGS and NOS/NOAA. Topography from aerial photographs by multiplex methods. Aerial photographs taken 1949. Field check 1953. Polyconic projection. 1927 North American datum. 10,000-foot grid based on Wyoming coordinate system, east central zone. Dashed land lines indicate approximate locations. To place on the predicted North American Datum 1983 move the projection lines 8 meters north and 50 meters east as shown by dashed corner ticks.

UTM GRID AND 1982 MAGNETIC NORTH DECLINATION AT CENTER OF SHEET  
1°03' 131° 240 MILS  
Revisions shown in purple compiled from aerial photographs taken 1980 and other source data. This information not field checked. Map edited 1982.



ROAD CLASSIFICATION  
Heavy-duty ——— Light-duty ———  
Medium-duty ——— Unimproved dirt ———  
U. S. Route (red circle) State Route (black circle)

THIS MAP COMPLIES WITH NATIONAL MAP ACCURACY STANDARDS  
FOR SALE BY U. S. GEOLOGICAL SURVEY, DENVER, COLORADO 80225, OR RESTON, VIRGINIA 22092  
A FOLDER DESCRIBING TOPOGRAPHIC MAPS AND SYMBOLS IS AVAILABLE ON REQUEST

FOURMILE POINT, WYO.  
N4215-W10630/7.5  
1953  
PHOTOREVISED 1982  
DMA 4688 1 SE-SERIES V874

DEC 23 1982

RETURN TO:  
USGS AND HISTORICAL MAP ARCHIVES