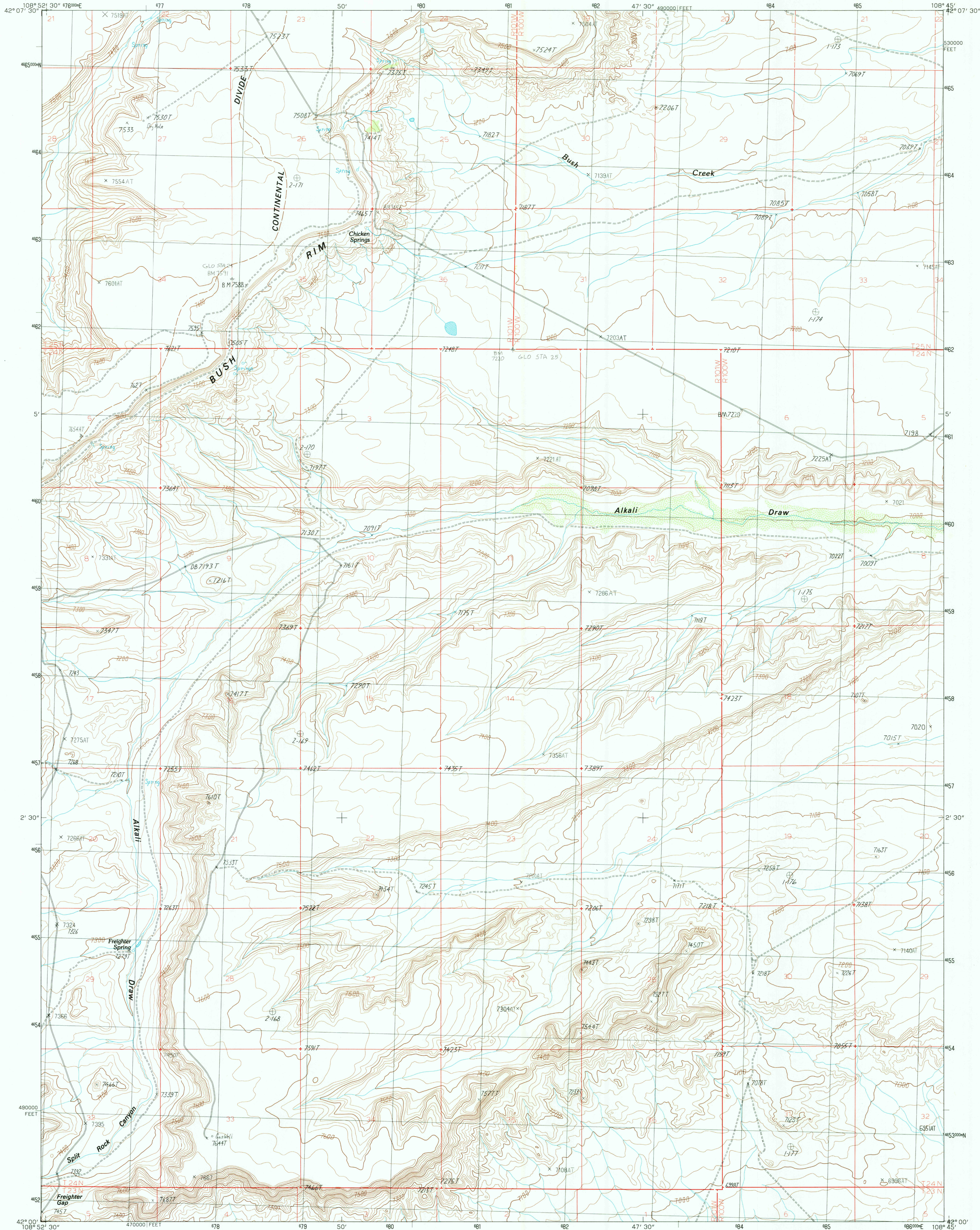


UNITED STATES  
DEPARTMENT OF THE INTERIOR  
GEOLOGICAL SURVEY

FREIGHTER GAP QUADRANGLE  
WYOMING-SWEETWATER CO.  
7.5 MINUTE SERIES (TOPOGRAPHIC)



PRODUCED BY THE UNITED STATES GEOLOGICAL SURVEY  
CONTROL BY . . . . . USGS, NOS/NOAA  
COMPILED FROM AERIAL PHOTOGRAPHS TAKEN . . . . . 1979  
FIELD CHECKED . . . . . 1980 MAP EDITED . . . . . 1986  
PROJECTION . . . . . TRANSVERSE MERCATOR  
GRID . . . . . 1000-METER UNIVERSAL TRANSVERSE MERCATOR  
1000-FOOT STATE GRID TICKS . . . . . WYOMING, WEST CENTRAL ZONE  
UTM GRID DECLINATION . . . . . 14° EAST  
1986 MAGNETIC NORTH DECLINATION . . . . . 12° EAST  
VERTICAL DATUM . . . . . NATIONAL GEODETIC VERTICAL DATUM OF 1929  
HORIZONTAL DATUM . . . . . 1927 NORTH AMERICAN DATUM  
To place on the predicted North American Datum of 1983,  
move the projection lines as shown by dashed corner ticks  
(9 meters north and 56 meters east)  
There may be private inholdings within the boundaries of any  
Federal and State Reservations shown on this map  
All marginal data and lettering generated and positioned by  
automated type placement procedures

PROVISIONAL MAP  
Produced from original  
manuscript drawings. Infor-  
mation shown as of date of  
field check.

SCALE 1:24 000  
1 0 1000 2000 3000 4000 5000 6000 7000 8000 9000 10 000  
FEET  
1 0 1000 2000 3000 4000 5000 6000 7000 8000 9000 10 000  
METERS  
CONTOUR INTERVAL 20 FEET  
THIS MAP COMPLIES WITH NATIONAL MAP ACCURACY STANDARDS  
FOR SALE BY U.S. GEOLOGICAL SURVEY, DENVER, COLORADO 80225  
OR RESTON, VIRGINIA 22092

1	2	3	1 Rock Cabin Spring
4	5	2 Joe Hay Run	
6	7	3 Red Jack Well	
		4 Monument Ridge	
		5 The Pinnacles	
		6 Steamboat Mountain	
		7 Black Rock North	
		8 Black Rock Flat West	

ROAD LEGEND  
Improved Road . . . . .  
Unimproved Road . . . . .  
Trail . . . . .  
Interstate Route U.S. Route State Route  
WYOMING  
QUADRANGLE LOCATION  
FREIGHTER GAP, WYOMING  
PROVISIONAL EDITION 1986  
42108-A7-TF-024

USGS NMD HISTORICAL MAP  
JUN 02 1986  
REC'D FILE COPY