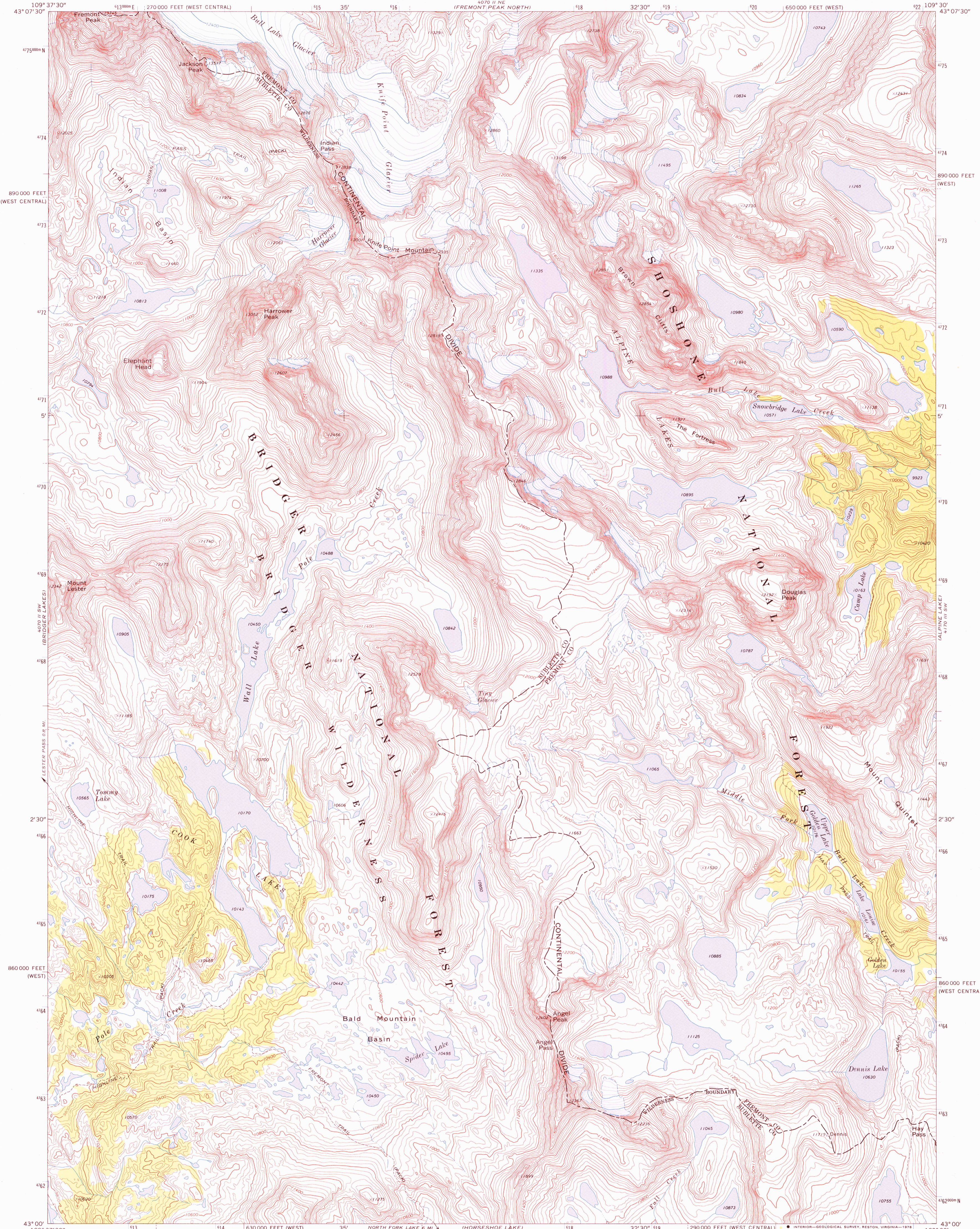


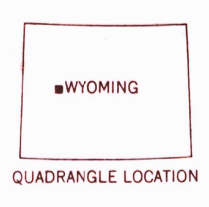
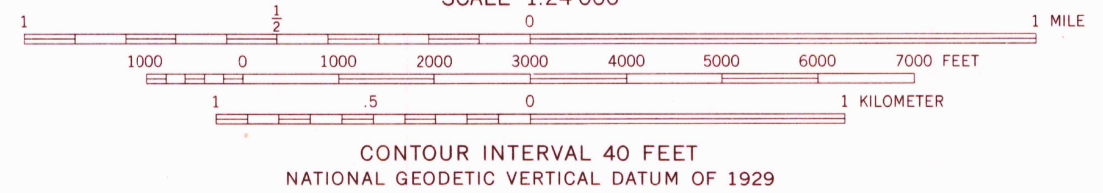
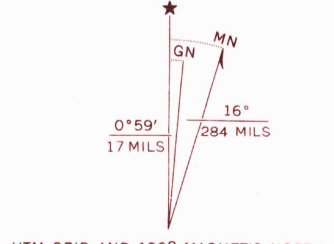
UNITED STATES
DEPARTMENT OF THE INTERIOR
GEOLOGICAL SURVEY

FREMONT PEAK SOUTH QUADRANGLE
WYOMING
7.5 MINUTE SERIES (TOPOGRAPHIC)



Mapped, edited, and published by the Geological Survey

Control by USGS and USCGS
Topography by photogrammetric methods from aerial photographs taken 1966. Field checked 1968
Polyconic projection. 1927 North American datum
10,000-foot grids based on Wyoming coordinate system, west and west central zones
1000-meter Universal Transverse Mercator grid ticks, zone 12, shown in blue
Land lines have not been established in this area
Map photoinspected 1977
No major culture or drainage changes observed



USGS
Historical File
Topographic Division

ROAD CLASSIFICATION
Trails

FREMONT PEAK SOUTH, WYO.
N4300-W10930/7.5

1968
PHOTOINSPECTED 1977
AMS 4070 II SE—SERIES 1874

THIS MAP COMPLIES WITH NATIONAL MAP ACCURACY STANDARDS
FOR SALE BY U. S. GEOLOGICAL SURVEY, DENVER, COLORADO 80225, OR RESTON, VIRGINIA 22092
A FOLDER DESCRIBING TOPOGRAPHIC MAPS AND SYMBOLS IS AVAILABLE ON REQUEST

MAR 14 1979

5850

FOR MORE INFORMATION CONTACT THE GEOLOGICAL SURVEY