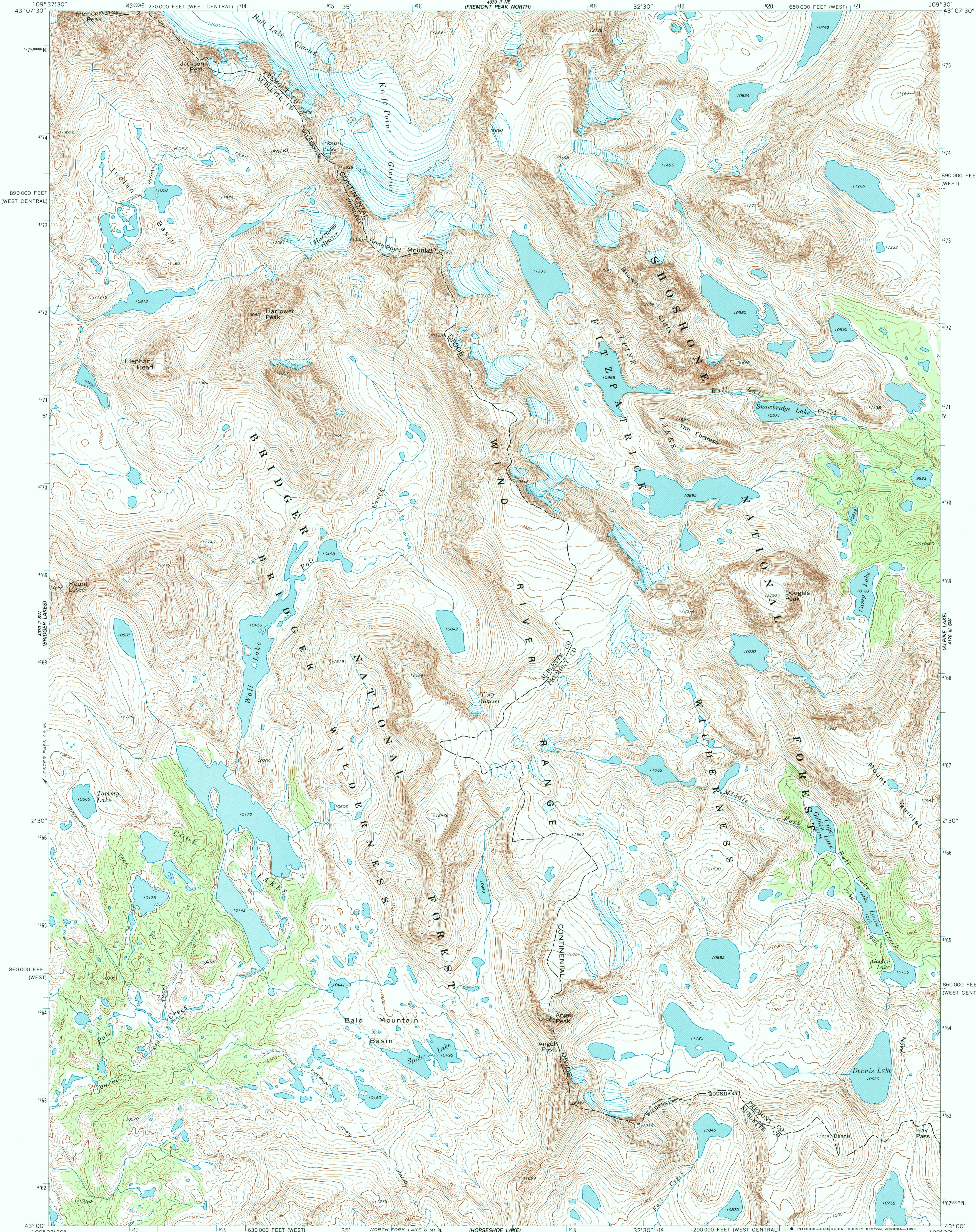
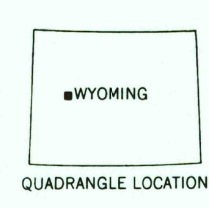
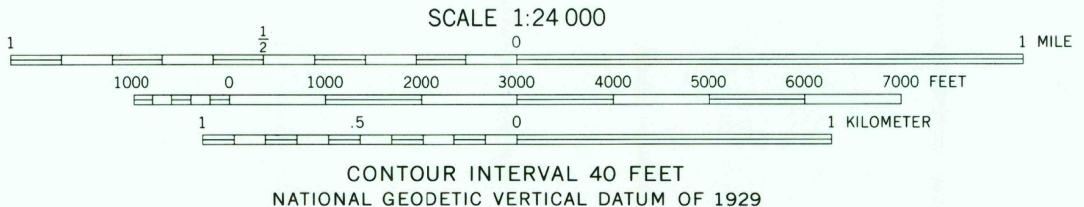
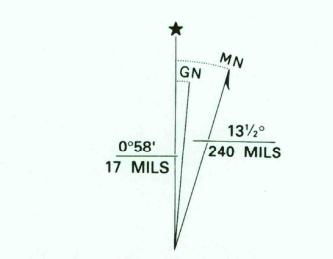


UNITED STATES
DEPARTMENT OF THE INTERIOR
GEOLOGICAL SURVEY

FREMONT PEAK SOUTH QUADRANGLE
WYOMING
7.5 MINUTE SERIES (TOPOGRAPHIC)



Produced by the United States Geological Survey
Control by USGS and NOS/NOAA
Compiled from aerial photographs taken 1966
Field checked 1968
North American Datum of 1927 (NAD 27). Projection:
Wyoming Coordinate System, west zone (Transverse Mercator)
10000-foot grid ticks. Wyoming Coordinate System, west
and west central zones. 1000-meter Universal Transverse
Mercator grid ticks, zone 12, shown in blue
The difference between NAD 27 and North American Datum of
1983 (NAD 83) for 7.5 minute intersections is given in USGS
Bulletin 1875. The NAD 83 is shown by dashed corner ticks
There may be private inholdings within the boundaries of the
National or State reservations shown on this map
Land lines have not been established in this area
Photospected from 1991 source; no major culture
or drainage changes observed. Boundaries verified and
names revised 1993



FREMONT PEAK SOUTH, WYO.

43109-A5-TF-024
1968
MINOR REVISION 1993
DMA 4070 II SE-SERIES V874

