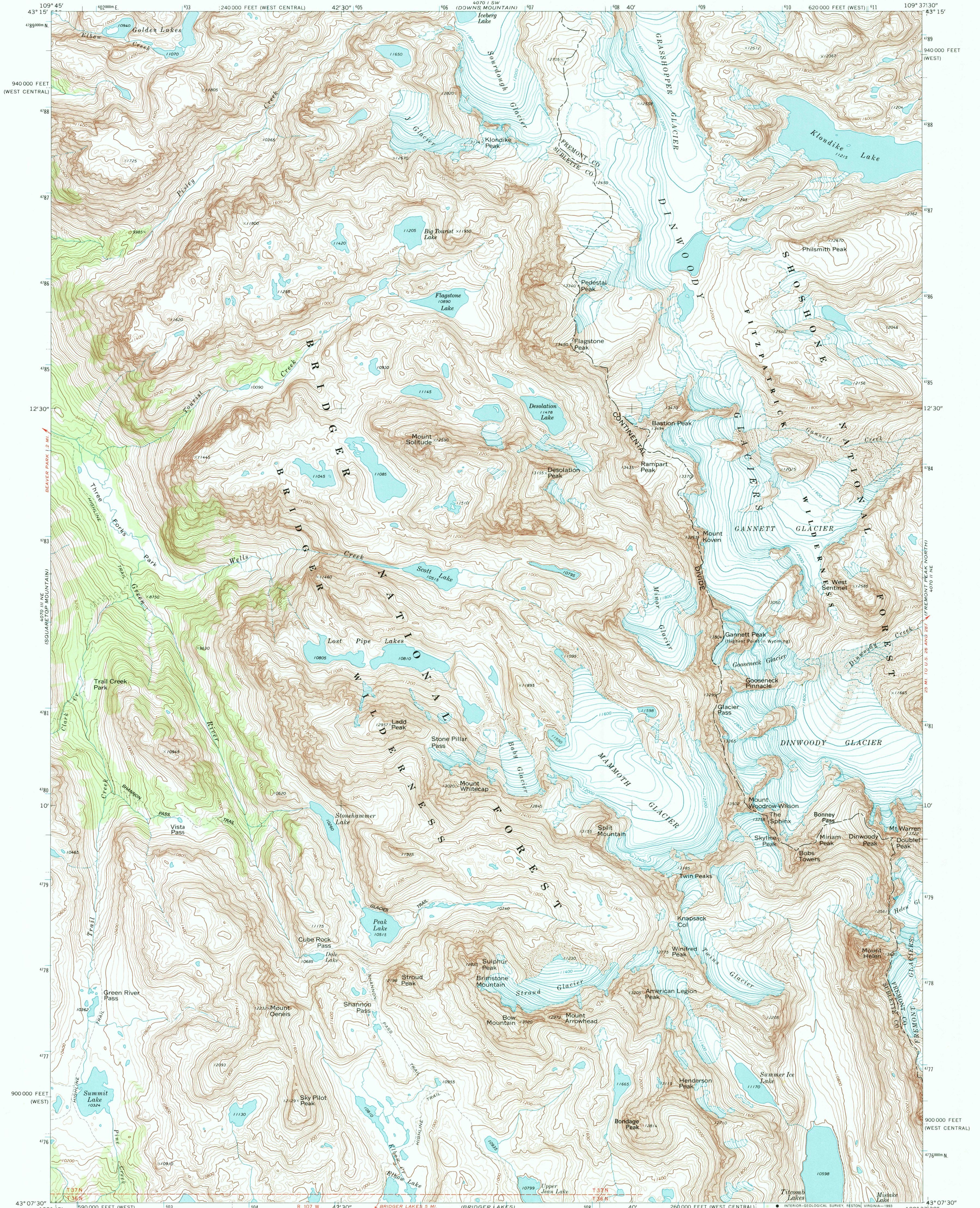
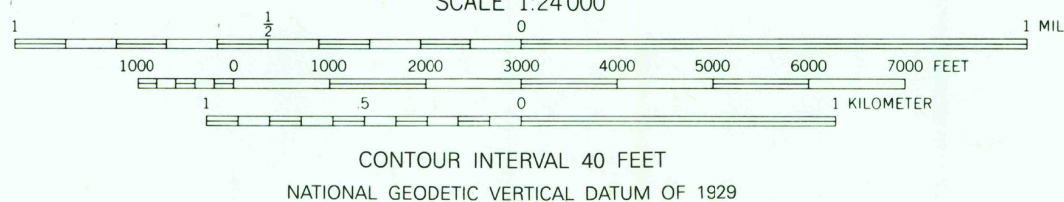
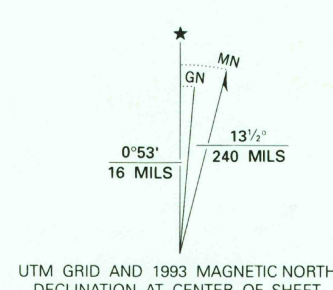


UNITED STATES  
DEPARTMENT OF THE INTERIOR  
GEOLOGICAL SURVEY

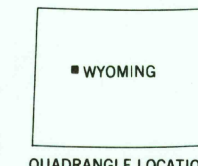
GANNETT PEAK QUADRANGLE  
WYOMING  
7.5 MINUTE SERIES (TOPOGRAPHIC)



Produced by the United States Geological Survey  
Control by USGS and NOS/NOAA  
Compiled from aerial photographs taken 1966. Field checked 1968  
North American Datum of 1927 (NAD 27). Projection:  
Wyoming Coordinate System, west zone (Transverse Mercator)  
10000-foot grid ticks. Wyoming Coordinate System, west and  
west central zones. 1000-meter Universal Transverse Mercator  
grid ticks, zone 12, shown in blue  
The difference between NAD 27 and North American Datum of  
1983 (NAD 83) for 7.5 minute intersections is given in USGS  
Bulletin 1875. The NAD 83 is shown by dashed corner ticks  
There may be private inholdings within the boundaries of the  
National or State reservations shown on this map  
Where omitted, land lines have not been established  
Photorevised from 1991 source; no major culture or  
drainage changes observed. Boundaries verified and  
names revised 1993



THIS MAP COMPLIES WITH NATIONAL MAP ACCURACY STANDARDS  
FOR SALE BY U.S. GEOLOGICAL SURVEY  
DENVER, COLORADO 80225, OR RESTON, VIRGINIA 22092  
A FOLDER DESCRIBING TOPOGRAPHIC MAPS AND SYMBOLS IS AVAILABLE ON REQUEST



ROAD CLASSIFICATION  
Primary highway, hard surface  
Secondary highway, hard surface  
Unimproved road  
Interstate Route  
U. S. Route  
State Route  
Light-duty road, hard or improved surface  
Unimproved road  
Interstate Route  
U. S. Route  
State Route

GANNETT PEAK, WYO.  
43109-86 TF-024

1968  
MINOR REVISION 1993  
DMA 4070 II NW-SERIES V874

