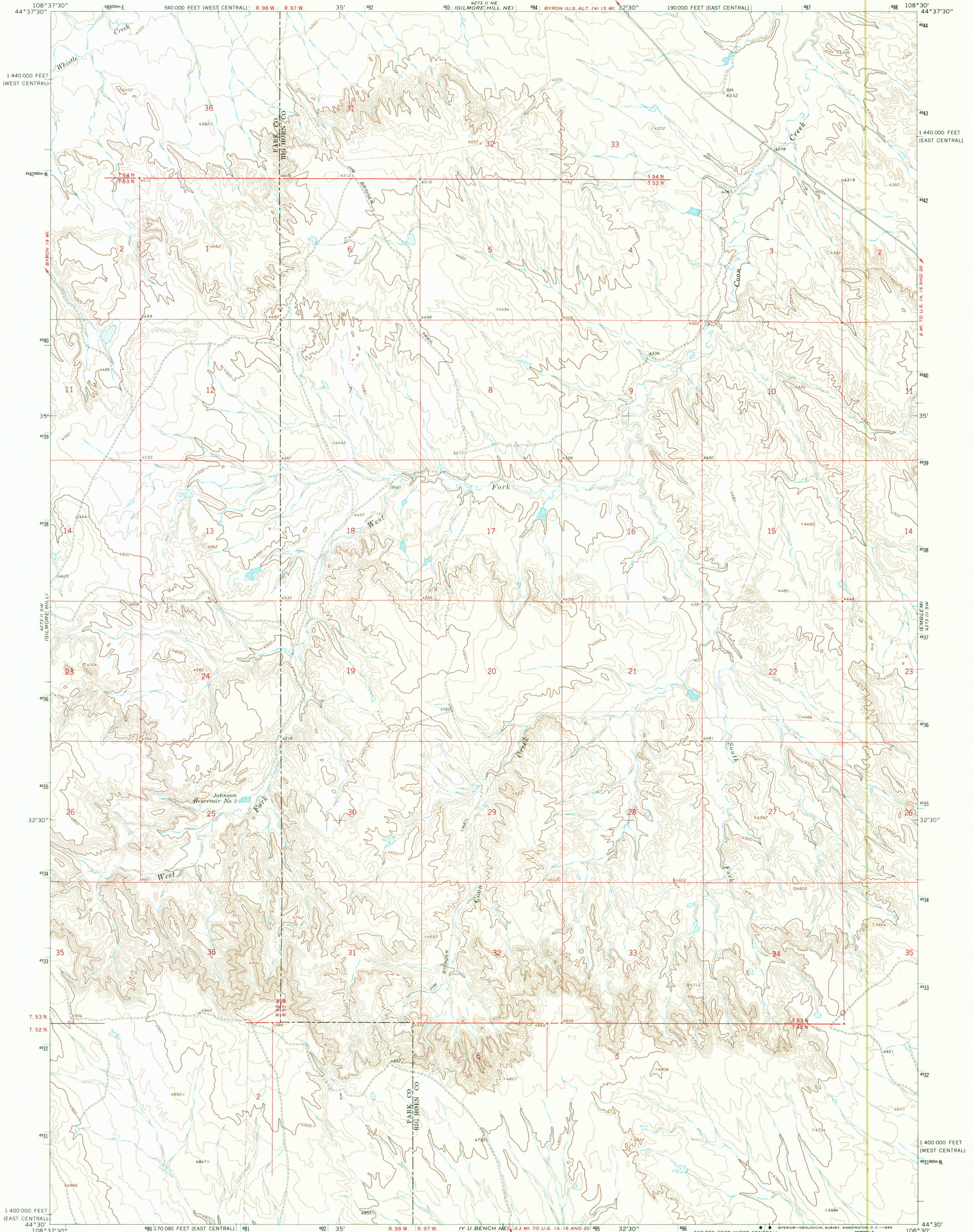


UNITED STATES
DEPARTMENT OF THE INTERIOR
GEOLOGICAL SURVEY

GILMORE HILL SE QUADRANGLE
WYOMING
7.5 MINUTE SERIES (TOPOGRAPHIC)



Mapped, edited, and published by the Geological Survey

Control by USGS and USC&GS

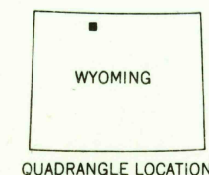
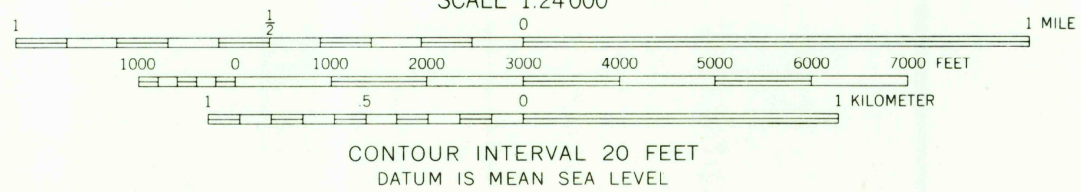
Topography by photogrammetric methods from aerial
photographs taken 1965. Field checked 1966.

Polconic projection. 1927 North American datum
10,000-foot grids based on Wyoming coordinate system,
east central and west central zones
1000-meter Universal Transverse Mercator grid ticks,
zone 12, shown in blue

Fine red dashed lines indicate selected fence lines

Land lines are omitted in areas of extensive tract surveys

UTM GRID AND 1966 MAGNETIC NORTH
DECLINATION AT CENTER OF SHEET



ROAD CLASSIFICATION
Light-duty ————— Unimproved dirt —————

U.S.G.S.

GILMORE HILL SE, WYO.

N4430—W10830/7.5

1966

AMS 4273 II SE—SERIES V874

TOPOGRAPHIC DIVISION

THIS MAP COMPLIES WITH NATIONAL MAP ACCURACY STANDARDS
FOR SALE BY U. S. GEOLOGICAL SURVEY, DENVER, COLORADO 80225, OR WASHINGTON, D. C. 20242
A FOLDER DESCRIBING TOPOGRAPHIC MAPS AND SYMBOLS IS AVAILABLE ON REQUEST

RETURN TO:
USGS NAT HISTORICAL MAP ARCHIVES

2680
AUG 2 2 1969