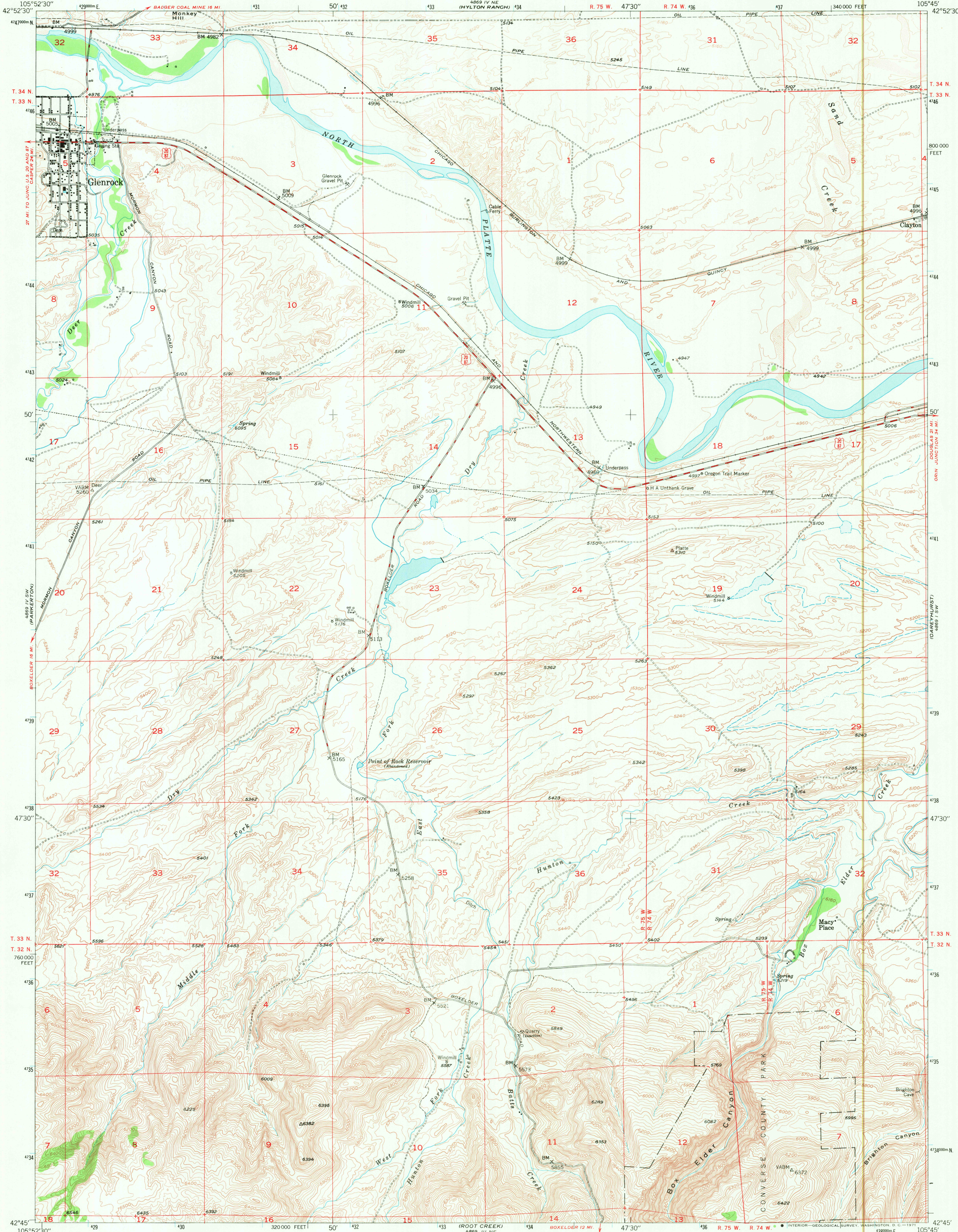


UNITED STATES
DEPARTMENT OF THE INTERIOR
GEOLOGICAL SURVEY

GLENROCK QUADRANGLE
WYOMING-CONVERSE CO.
7.5 MINUTE SERIES (TOPOGRAPHIC)

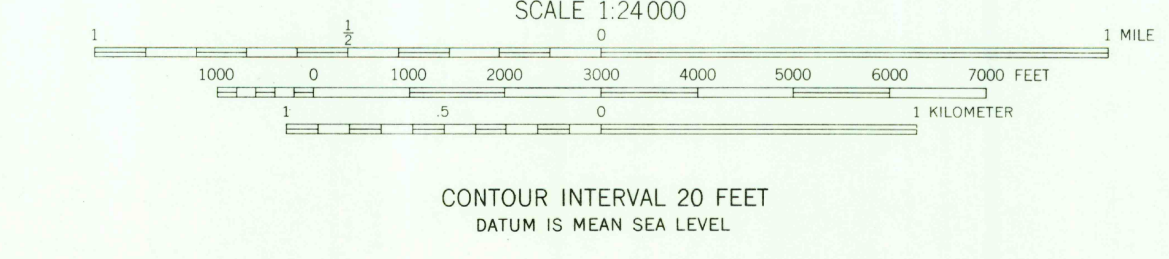
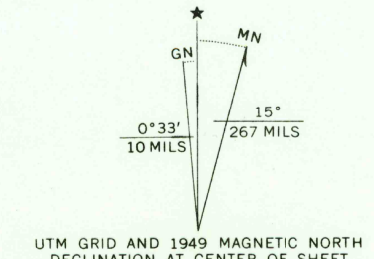


Mapped, edited, and published by the Geological Survey as part of the Department of the Interior program for the development of the Missouri River Basin Control by USGS and USC&GS

Topography from aerial photographs by multiplex methods Aerial photographs taken June 1947. Field check 1949

Polyconic projection. 1927 North American datum 10,000-foot grid based on Wyoming coordinate system, east zone

1000-meter Universal Transverse Mercator grid ticks, zone 13, shown in blue



ROAD CLASSIFICATION

HARD-SURFACE ALL WEATHER ROADS DRY WEATHER ROADS

Heavy-duty ———— **LANE IS LANE** Improved dirt ————

Medium-duty ———— **LANE IS LANE** Unimproved dirt ————

Loose-surface, graded, or narrow hard-surface - - - - -

U. S. Route State Route

GLENROCK, WYO.
N4245-W10545/7.5

OCT 1 1971

THIS MAP COMPLIES WITH NATIONAL MAP ACCURACY STANDARDS
FOR SALE BY U. S. GEOLOGICAL SURVEY, DENVER, COLORADO 80225, OR WASHINGTON, D. C. 20242
A FOLDER DESCRIBING TOPOGRAPHIC MAPS AND SYMBOLS IS AVAILABLE ON REQUEST

USGS
HISTORICAL FILE
TOPOGRAPHIC DIVISION

AMS 4869 IV SE-SERIES V874

RETURN TO:
USGS AND HISTORICAL MAP ARCHIVES