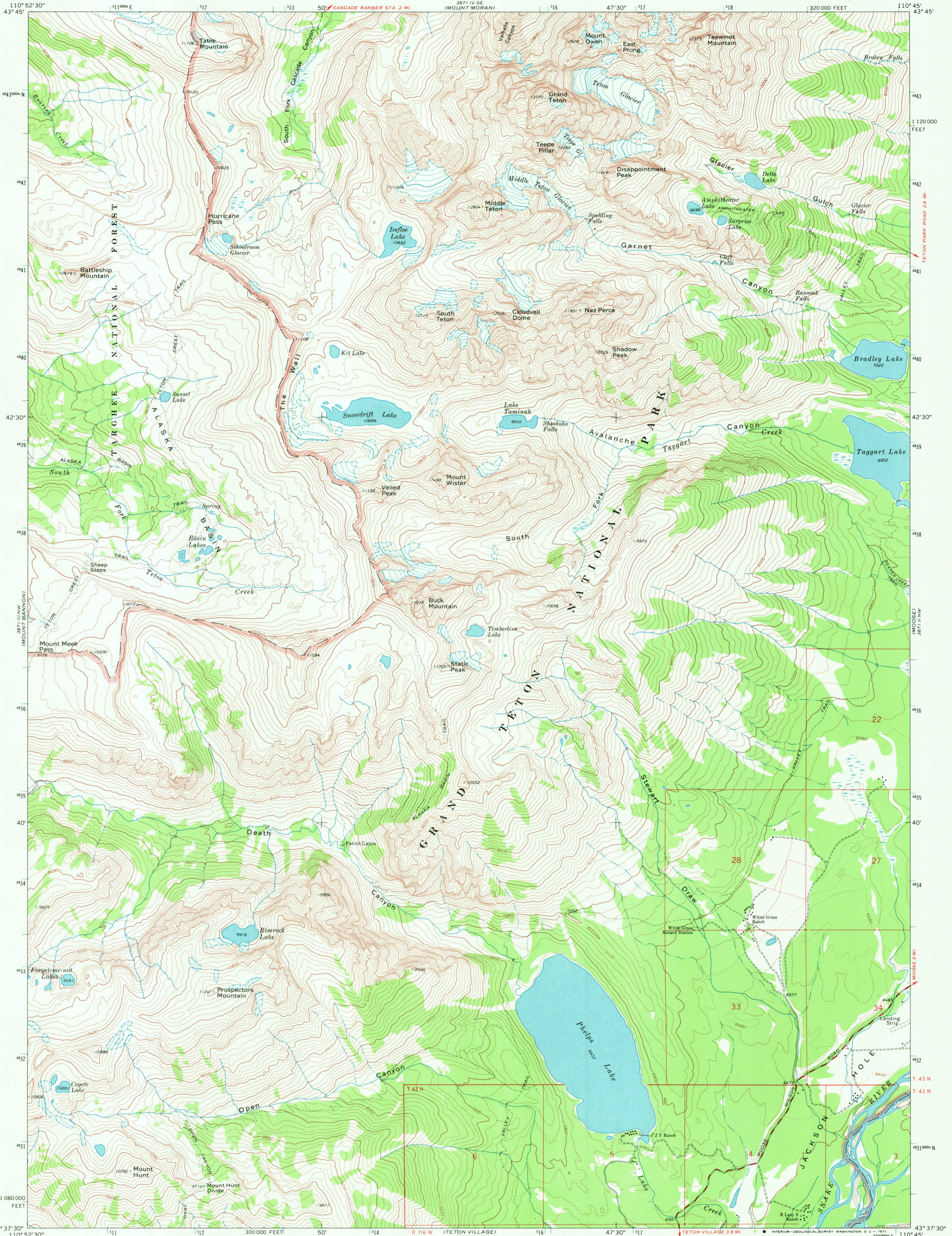
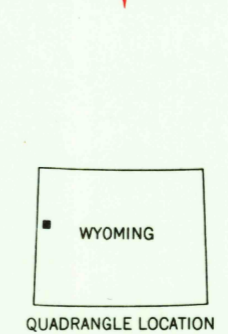
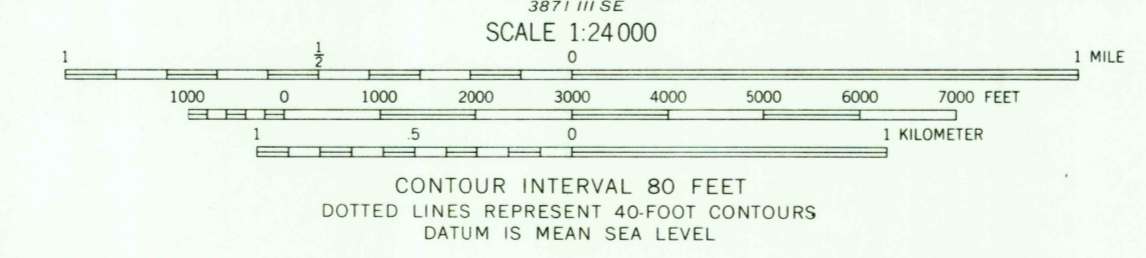
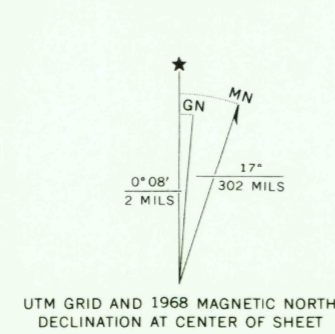


3871 I SW
(JENNY LAKE)



Mapped, edited, and published by the Geological Survey
Control by USGS and USC&GS
Topography by photogrammetric methods from aerial
photographs taken 1967. Field checked 1968
Polyconic projection. 1927 North American datum
10,000-foot grid based on Wyoming coordinate system,
west zone
1000-meter Universal Transverse Mercator grid ticks,
zone 12, shown in blue
Fine red dashed lines indicate selected fence lines
Where omitted, land lines have not been established



ROAD CLASSIFICATION
Secondary highway, all weather, Light-duty road, all weather,
hard surface improved surface
Unimproved road, fair or dry
weather

GRAND TETON, WYO.
N4337.5-W11045.7.5
1968

JAN 3 1972

RETURN TO:
USGS AND HISTORICAL MAP ARCHIVES

2620