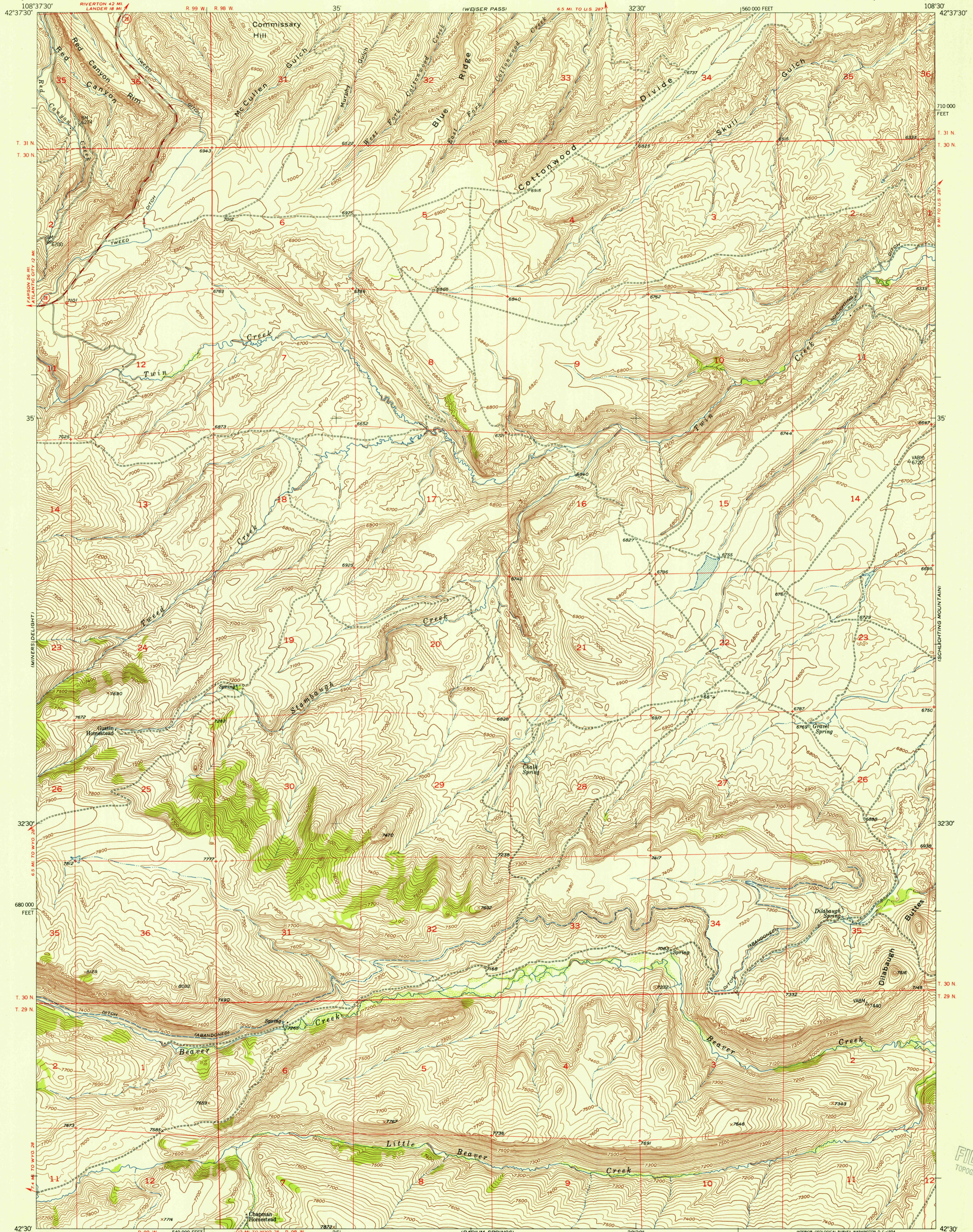


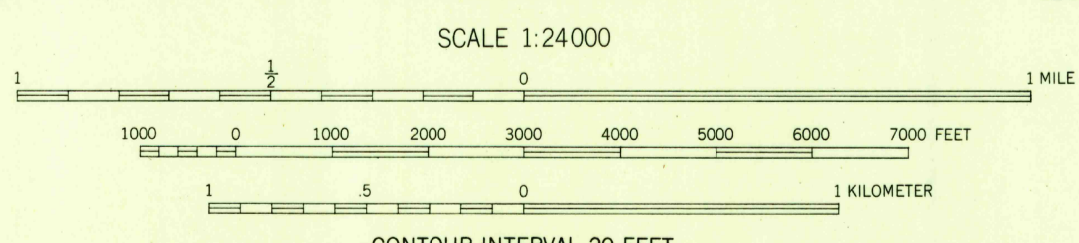
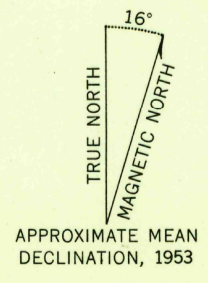
UNITED STATES
DEPARTMENT OF THE INTERIOR
GEOLOGICAL SURVEY

FILE COPY
TOPOGRAPHIC DIVISION

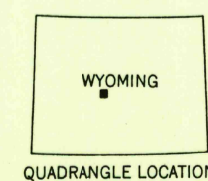
GRAVEL SPRING QUADRANGLE
WYOMING-FREMONT CO.
7.5 MINUTE SERIES (TOPOGRAPHIC)



Mapped, edited, and published by the Geological Survey as part of the Department of the Interior program for the development of the Missouri River Basin. Control by USGS and USC&GS. Topography from aerial photographs by multiplex methods. Aerial photographs taken 1949. Field check 1953. Polyconic projection. 1927 North American datum. 10,000-foot grid based on Wyoming coordinate system, west central zone. Dashed land lines indicate approximate locations.



CONTOUR INTERVAL 20 FEET
DATUM IS MEAN SEA LEVEL



ROAD CLASSIFICATION		
Heavy-duty	4 LANE 16 LANE	Light-duty
Medium-duty	4 LANE 16 LANE	Unimproved dirt
U. S. Route		State Route

FOR SALE BY U. S. GEOLOGICAL SURVEY, FEDERAL CENTER, DENVER, COLORADO OR WASHINGTON 25, D. C.
A FOLDER DESCRIBING TOPOGRAPHIC MAPS AND SYMBOLS IS AVAILABLE ON REQUEST

GRAVEL SPRING, WYO.
N4230-W10830/7.5
1953

RETURN TO:
USGS AND HISTORICAL MAP ARCHIVES

U.S.G.S.
FILE COPY
TOPOGRAPHIC DIVISION

DEC 2 1954
DEC 2 1954

2/30