

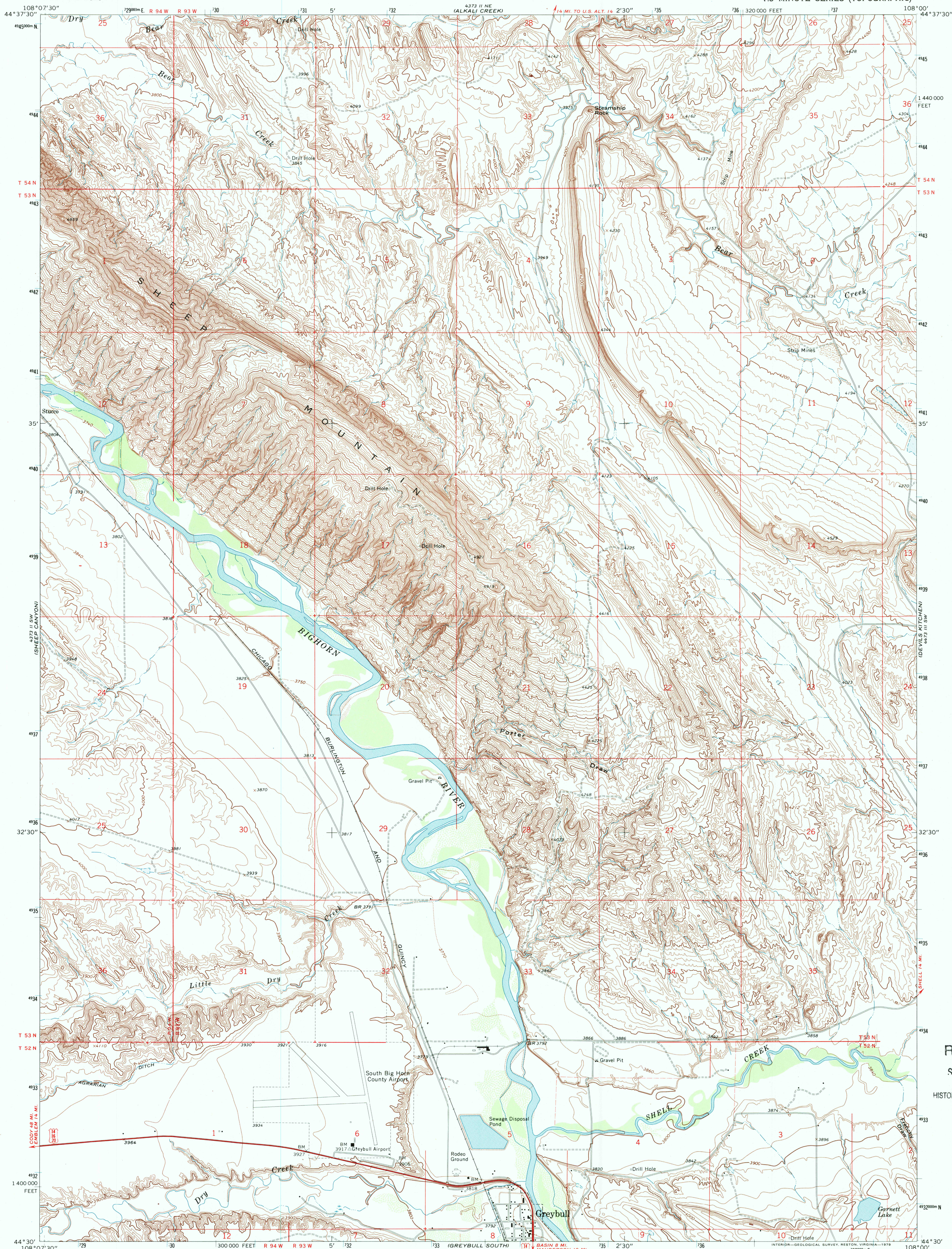
33° 11' W
1:250,000
SCALE

USGS
science for a changing world

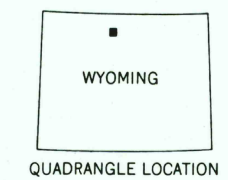
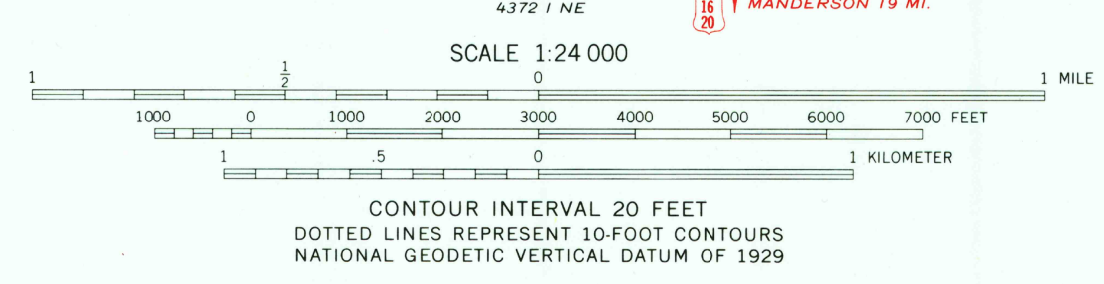
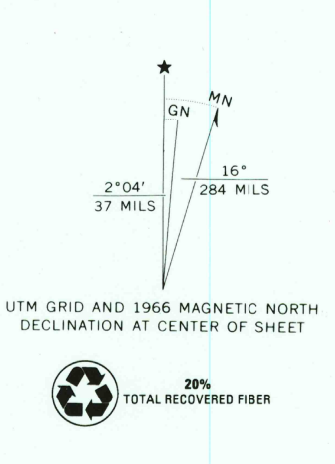
U.S. DEPARTMENT OF THE INTERIOR
U.S. GEOLOGICAL SURVEY

GREYBULL NORTH QUADRANGLE
WYOMING—BIG HORN CO.
7.5 MINUTE SERIES (TOPOGRAPHIC)

47° 11' N
1:250,000
SCALE
BEAR CREEK RANGE



Mapped, edited, and published by the Geological Survey
Control by USGS and USC&GS
Topography by photogrammetric methods from aerial photographs taken 1964. Field checked 1965
Polyconic projection. 1927 North American datum 10,000-foot grid based on Wyoming coordinate system, east central zone
1000-meter Universal Transverse Mercator grid ticks, zone 12, shown in blue
Fine red dashed lines indicate selected fence lines
Land lines are omitted in areas of extensive tract surveys
To place on the predicted North American Datum 1983 move the projection lines 8 meters north and 52 meters east as shown by dashed corner ticks



ROAD CLASSIFICATION
Heavy-duty ——— Light-duty ———
Unimproved dirt ———
U S Route

GREYBULL NORTH, WYO.
N4430—W10800/7.5

1966
DMA 4373 II SE—SERIES V874

RECEIVED
SEP 30 2001
HISTORICAL MAP ARCHIVES

THIS MAP COMPLIES WITH NATIONAL MAP ACCURACY STANDARDS
FOR SALE BY U.S. GEOLOGICAL SURVEY, P.O. BOX 25286, DENVER, COLORADO 80225
A FOLDER DESCRIBING TOPOGRAPHIC MAPS AND SYMBOLS IS AVAILABLE ON REQUEST

ISBN 0-607-60622-3
9 780607 606223