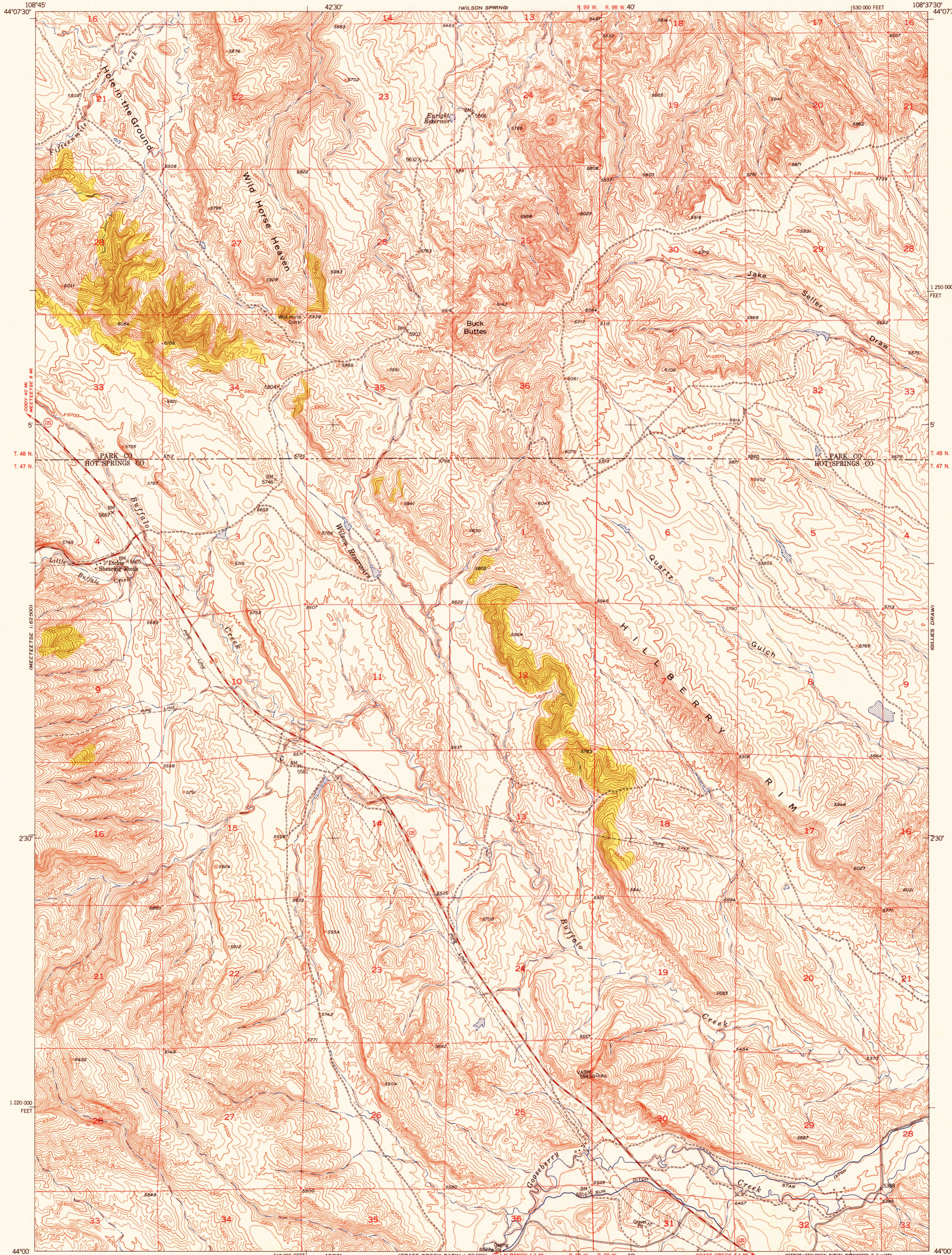
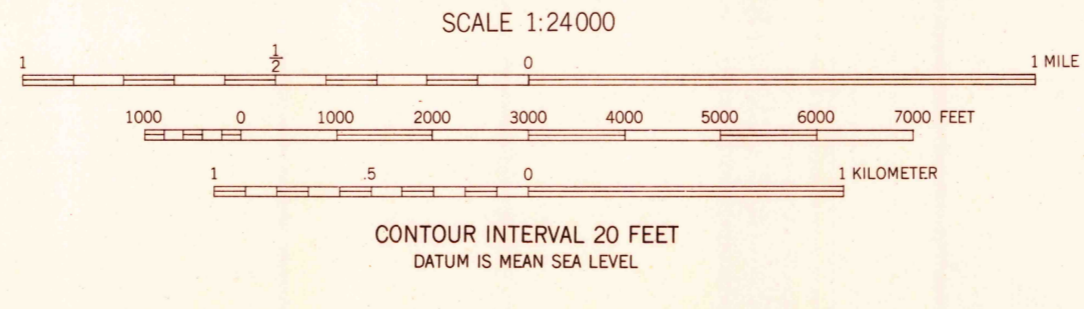


U.S.G.S.
FILE COPY
Inspection and Editing



Mapped, edited, and published by the Geological Survey as part of the Department of the Interior program for the development of the Missouri River Basin. Control by USGS and USC&GS. Topography from aerial photographs by multiplex methods. Aerial photographs taken 1949. Field check 1951. Polyconic projection, 1927 North American datum. 10,000-foot grid based on Wyoming coordinate system, west central zone.



ROAD CLASSIFICATION

Heavy-duty	4 LANE 16 LANE	Light-duty
Medium-duty	4 LANE 16 LANE	Unimproved dirt

U.S. Route (circle with number)
State Route (circle with number)

HILLBERRY RIM, WYO.
N4400-W10837.5/7.5
1951

U.S.G.S.
FILE COPY
Inspection and Editing

SECTION 70:
USGS AND HISTORICAL MAP ARCHIVES