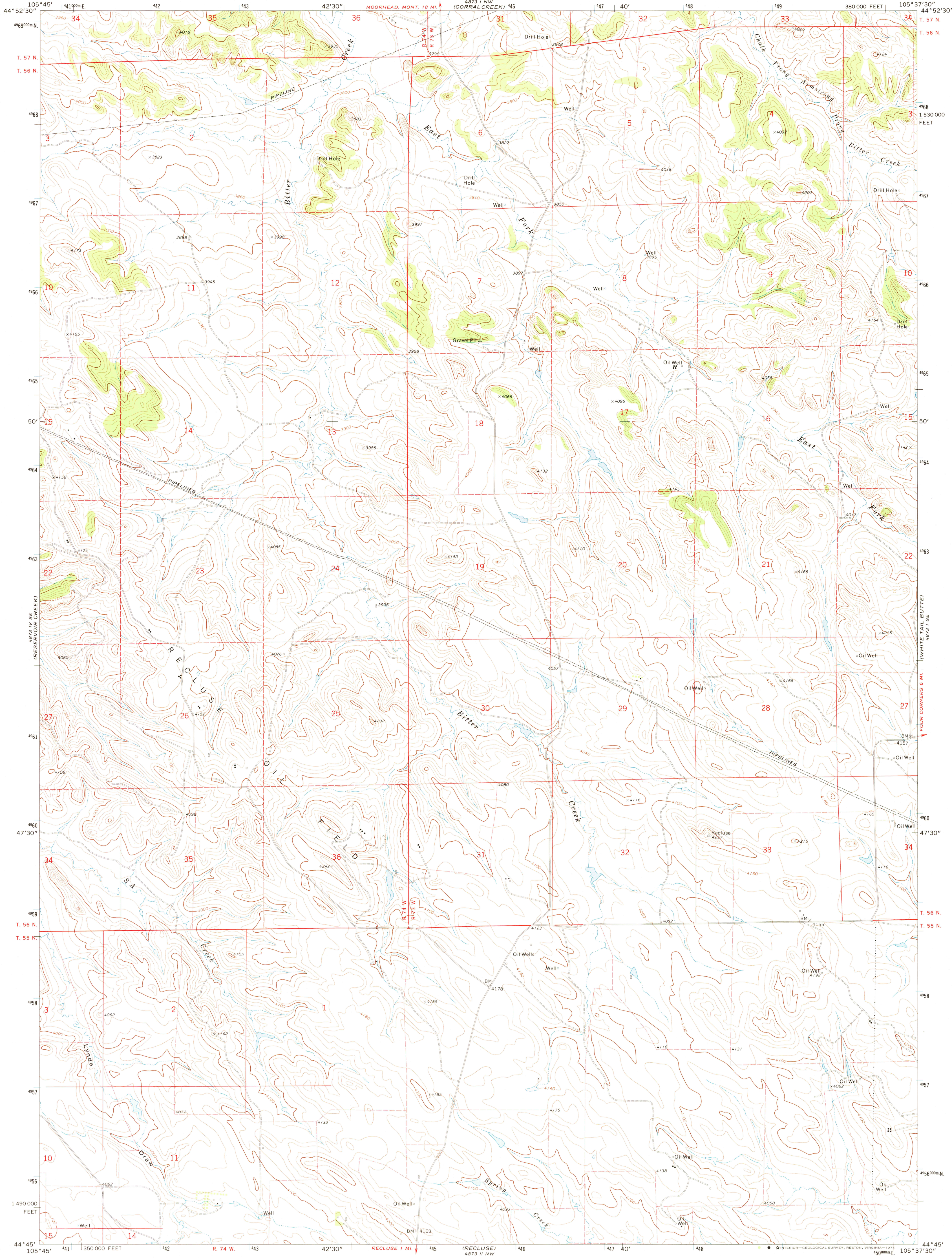
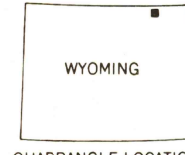
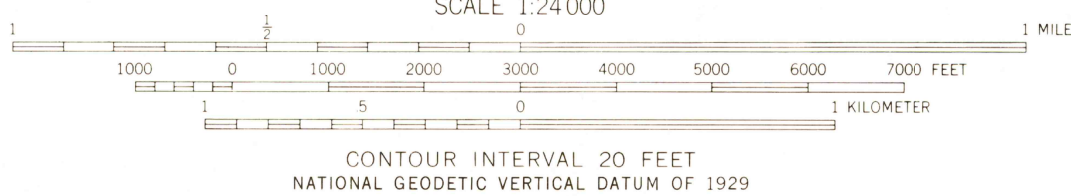
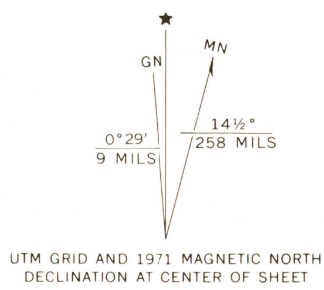


UNITED STATES  
DEPARTMENT OF THE INTERIOR  
GEOLOGICAL SURVEY

HOMESTEAD DRAW SW QUADRANGLE  
WYOMING—CAMPBELL CO.  
7.5 MINUTE SERIES (TOPOGRAPHIC)



Mapped, edited, and published by the Geological Survey  
Control by USGS and USC&GS  
Topography by photogrammetric methods from aerial  
photographs taken 1970. Field checked 1971  
Projection and 10,000-foot grid ticks: Wyoming  
coordinate system, east zone (transverse Mercator)  
1000-meter Universal Transverse Mercator grid ticks,  
zone 13, shown in blue. 1927 North American datum  
Fine red dashed lines indicate selected fence lines  
Land lines are omitted in areas of extensive tract surveys



ROAD CLASSIFICATION  
Primary highway, Light-duty road, hard or  
hard surface improved surface  
Secondary highway, Unimproved road  
hard surface Interstate Route U. S. Route State Route

HOMESTEAD DRAW SW, WYO.  
N4445-W10537.5/7.5

1971

AMS 4873 1 SW—SERIES V874

THIS MAP COMPLIES WITH NATIONAL MAP ACCURACY STANDARDS  
FOR SALE BY U.S. GEOLOGICAL SURVEY, DENVER, COLORADO 80225, OR RESTON, VIRGINIA 22092  
A FOLDER DESCRIBING TOPOGRAPHIC MAPS AND SYMBOLS IS AVAILABLE ON REQUEST

DEC 1 1 1974

REPRODUCTION OF  
USGS MAP HORIZONTAL MAP SHEETS

2950