

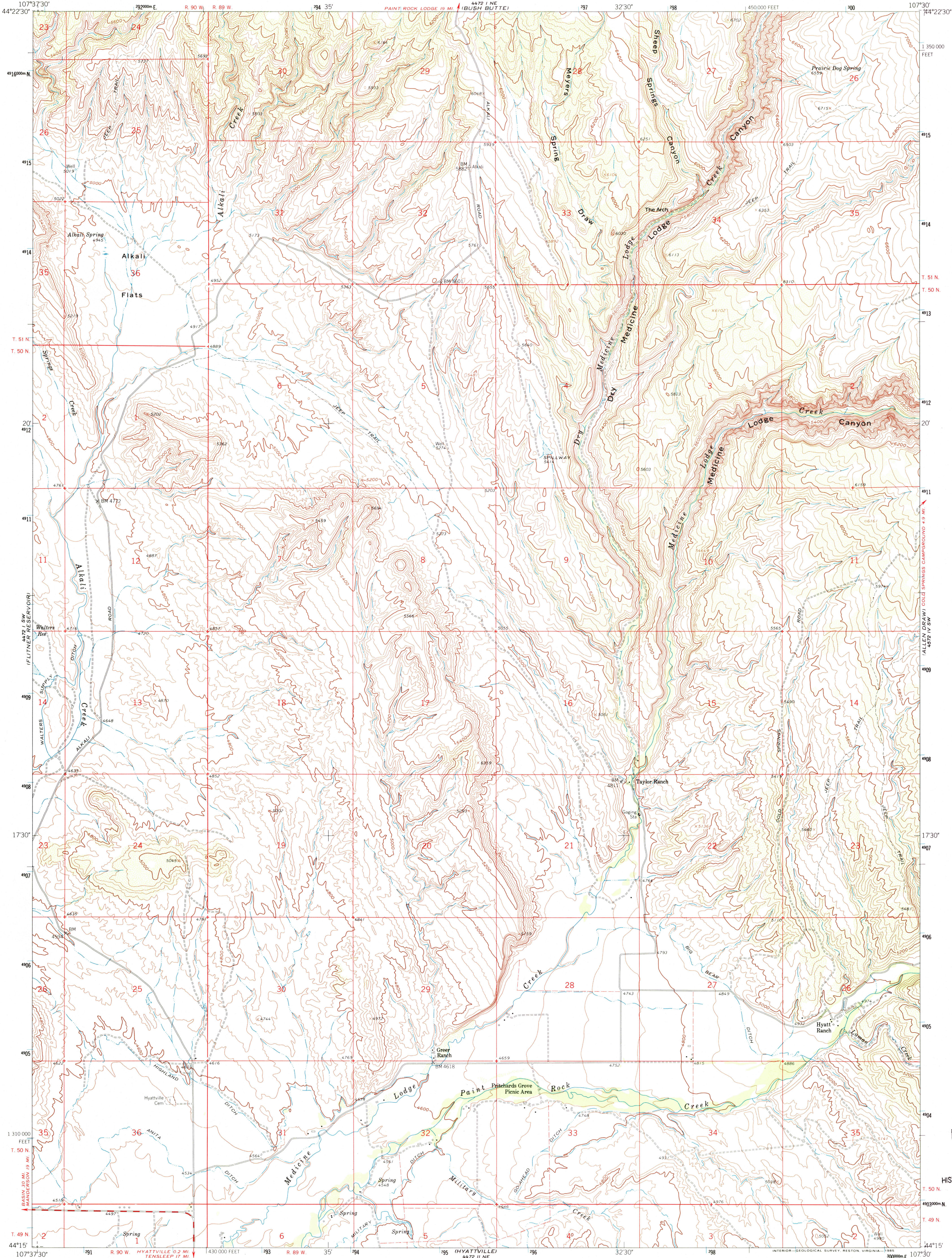
442 I NW
442 II NW
442 III NW
442 IV NW
442 V NW
442 VI NW
442 VII NW
442 VIII NW
442 IX NW
442 X NW
442 XI NW
442 XII NW
442 XIII NW
442 XIV NW
442 XV NW
442 XVI NW
442 XVII NW
442 XVIII NW
442 XIX NW
442 XX NW
442 XXI NW
442 XXII NW
442 XXIII NW
442 XXIV NW
442 XXV NW
442 XXVI NW
442 XXVII NW
442 XXVIII NW
442 XXIX NW
442 XXX NW



U.S. DEPARTMENT OF THE INTERIOR
U.S. GEOLOGICAL SURVEY

HYATT RANCH QUADRANGLE
WYOMING-BIG HORN CO.
7.5 MINUTE SERIES (TOPOGRAPHIC)

442 I NW
442 II NW
442 III NW
442 IV NW
442 V NW
442 VI NW
442 VII NW
442 VIII NW
442 IX NW
442 X NW
442 XI NW
442 XII NW
442 XIII NW
442 XIV NW
442 XV NW
442 XVI NW
442 XVII NW
442 XVIII NW
442 XIX NW
442 XX NW
442 XXI NW
442 XXII NW
442 XXIII NW
442 XXIV NW
442 XXV NW
442 XXVI NW
442 XXVII NW
442 XXVIII NW
442 XXIX NW
442 XXX NW



Maped, edited, and published by the Geological Survey as part of the Department of the Interior program for the development of the Missouri River Basin

Control by USGS and USC&GS

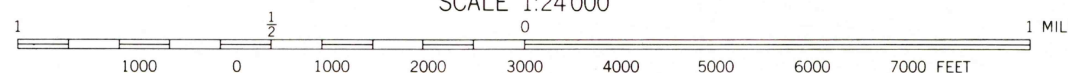
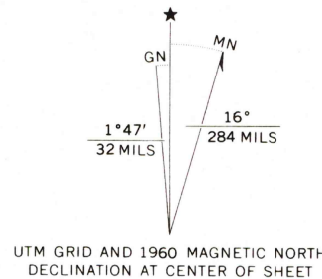
Topography by photogrammetric methods from aerial photographs taken 1957. Field checked 1960

Polyconic projection. 1927 North American Datum

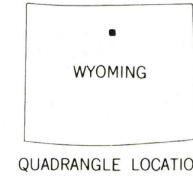
10,000-foot grid based on Wyoming coordinate system, east central zone

1000-meter Universal Transverse Mercator grid ticks, zone 13, shown in blue

Fine red dashed lines indicate selected fence and field lines where generally visible on aerial photographs
This information is unchecked



CONTOUR INTERVAL 40 FEET
NATIONAL GEODETIC VERTICAL DATUM OF 1929



ROAD CLASSIFICATION
Medium-duty ——— Light-duty ———
Unimproved dirt ———

HYATT RANCH, WYO.

44107-C5-TF-024

1960

DMA 4472 I SE-SERIES V874

THIS MAP COMPLIES WITH NATIONAL MAP ACCURACY STANDARDS
FOR SALE BY U.S. GEOLOGICAL SURVEY, P.O. BOX 25286, DENVER, COLORADO 80225
A FOLDER DESCRIBING TOPOGRAPHIC MAPS AND SYMBOLS IS AVAILABLE ON REQUEST

To place on the predicted North American Datum 1983
move the projection lines 8 meters north and
52 meters east as shown by dashed corner ticks

RECEIVED
APR 10 2001

HISTORICAL MAP ARCHIVE

