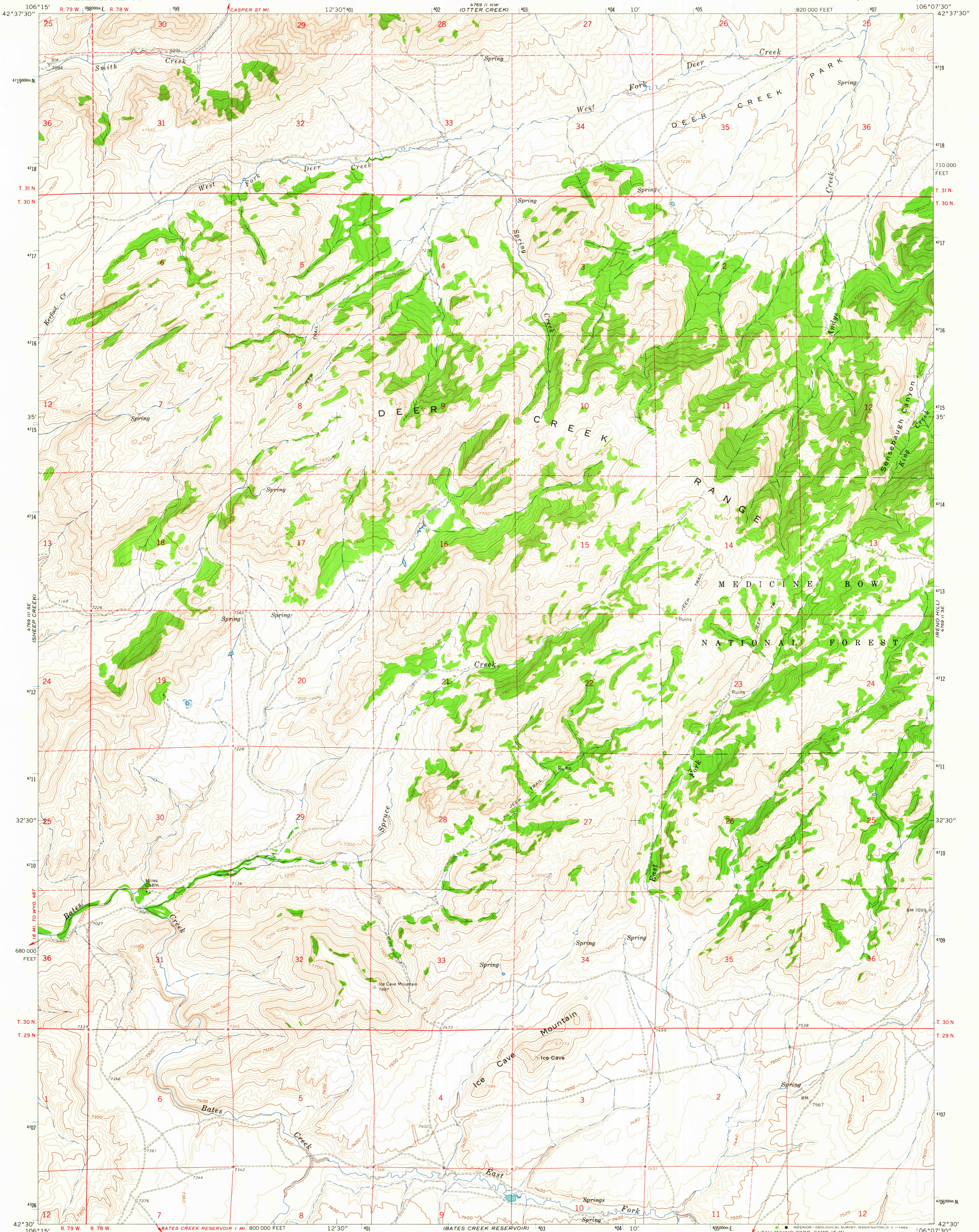
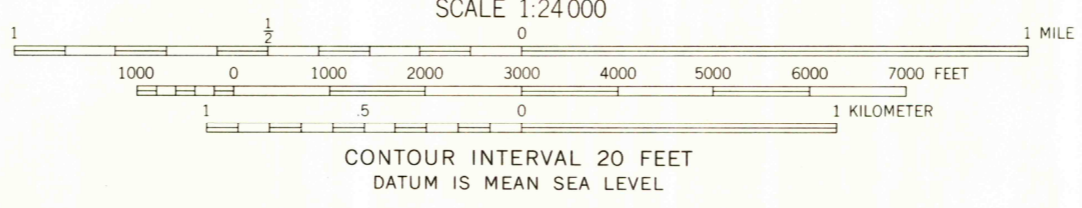
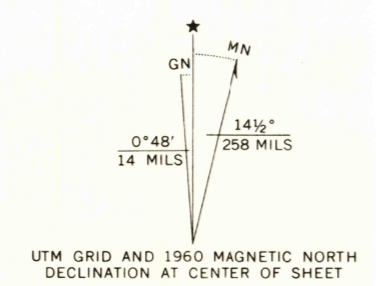


UNITED STATES
DEPARTMENT OF THE INTERIOR
GEOLOGICAL SURVEY

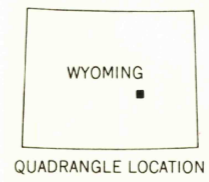
ICE CAVE MOUNTAIN QUADRANGLE
WYOMING-NATRONA CO.
7.5 MINUTE SERIES (TOPOGRAPHIC)



Maped, edited, and published by the Geological Survey
Control by USGS and USC&GS
Topography by photogrammetric methods from aerial
photographs taken 1959. Field checked 1960
Polyconic projection. 1927 North American datum
10,000-foot grid based on Wyoming coordinate system,
east central zone
1,000-meter Universal Transverse Mercator grid ticks,
zone 13, shown in blue
Fine red dashed lines indicate selected fence lines



CONTOUR INTERVAL 20 FEET
DATUM IS MEAN SEA LEVEL



UTAH MINING CORP. CAMP 15 MI.
MEDICINE BOW 48 MI.

ROAD CLASSIFICATION
Unimproved dirt -----

ICE CAVE MOUNTAIN, WYO.
N4230-W10607.5/7.5

1960
AMS 4769 II SW-SERIES V874

THIS MAP COMPLIES WITH NATIONAL MAP ACCURACY STANDARDS
FOR SALE BY U. S. GEOLOGICAL SURVEY, DENVER 25, COLORADO OR WASHINGTON 25, D. C.
A FOLDER DESCRIBING TOPOGRAPHIC MAPS AND SYMBOLS IS AVAILABLE ON REQUEST

RETURN TO:
USGS AND HISTORICAL MAP ARCHIVES

OCT 20 1964

2460
U.S.G.S.
FILE COPY
TOPOGRAPHIC DIVISION