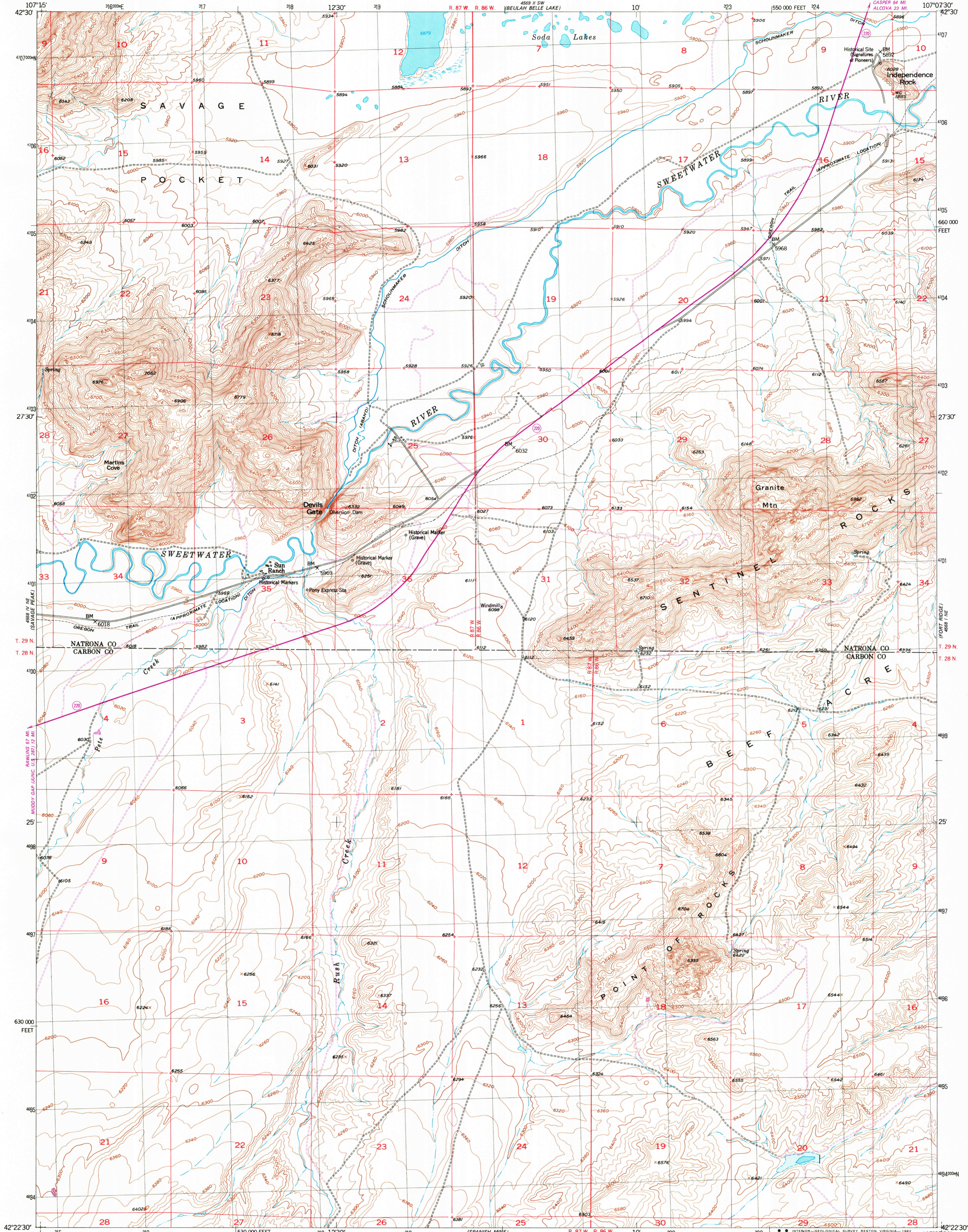


UNITED STATES
DEPARTMENT OF THE INTERIOR
GEOLOGICAL SURVEY

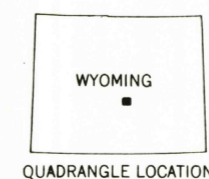
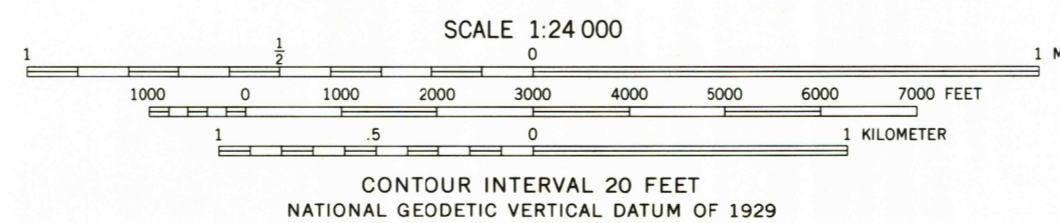
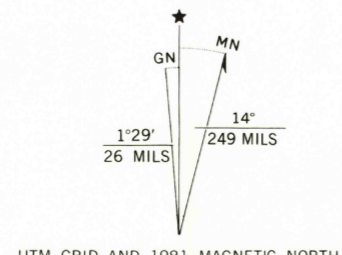
INDEPENDENCE ROCK QUADRANGLE
WYOMING
7.5 MINUTE SERIES (TOPOGRAPHIC)



Mapped, edited, and published by the Geological Survey as part of the Department of the Interior program for the development of the Missouri River Basin

Control by USGS and NOS/NOAA
Topography from aerial photographs by multiple methods
Aerial photographs taken 1946 and 1948. Field check 1951
Polyconic projection. 1927 North American datum
10,000-foot grid based on Wyoming coordinate system, east central zone

1000-meter Universal Transverse Mercator grid, zone 13
1927 North American datum
To place on the predicted North American Datum 1983
move the projection lines 8 meters north and
52 meters east as shown by dashed corner ticks



ROAD CLASSIFICATION

Heavy-duty	4 LANE 16 LANE	Light-duty
Medium-duty	4 LANE 16 LANE	Unimproved dirt
U.S. Route		State Route

THIS MAP COMPLIES WITH NATIONAL MAP ACCURACY STANDARDS
FOR SALE BY U. S. GEOLOGICAL SURVEY, DENVER, COLORADO 80225, OR RESTON, VIRGINIA 22092
A FOLDER DESCRIBING TOPOGRAPHIC MAPS AND SYMBOLS IS AVAILABLE ON REQUEST

Revisions shown in purple compiled from aerial photographs taken 1980 and other source data. This information not field checked. Map edited 1981

INDEPENDENCE ROCK, WYO.
N4222.5-10707.5/7.5
1951
PHOTOREVISED 1981
DMA 4568 1 NW-SERIES 9874

OCT 22 1982

2000

RETURN TO:
USGS NED HISTORICAL MAP ARCHIVES