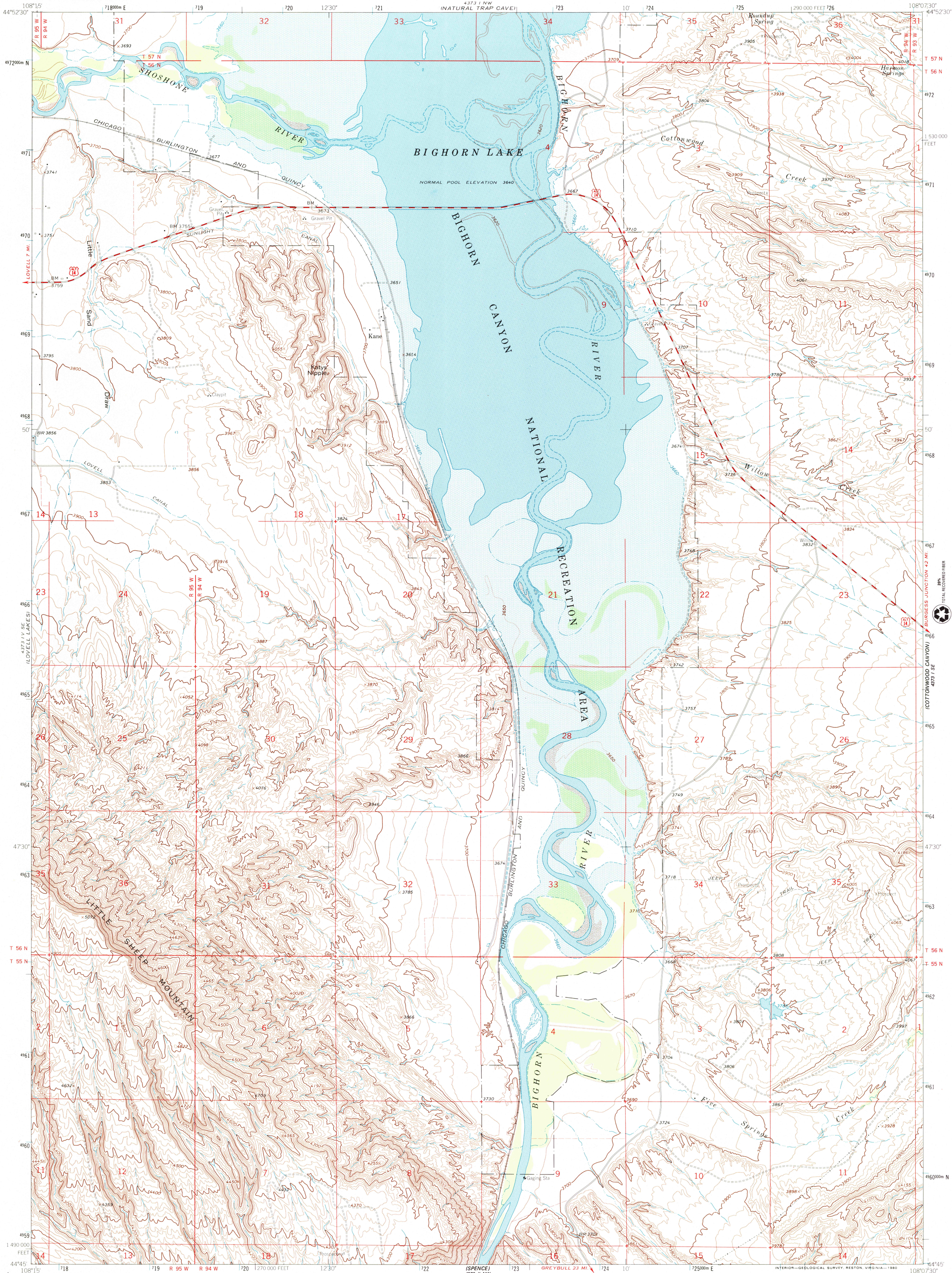


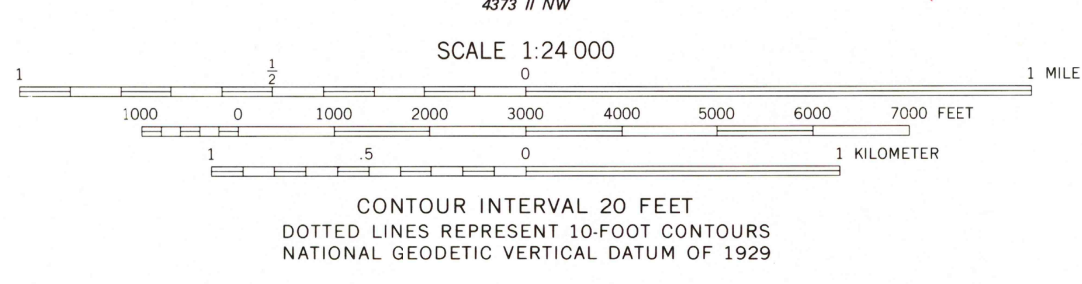
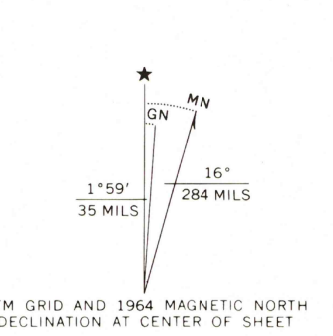


U.S. DEPARTMENT OF THE INTERIOR
U.S. GEOLOGICAL SURVEY

KANE QUADRANGLE
WYOMING-BIG HORN CO.
7.5 MINUTE SERIES (TOPOGRAPHIC)

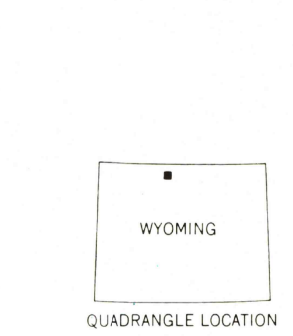


Mapped, edited, and published by the Geological Survey as part of the Department of the Interior program for the development of the Missouri River Basin
Control by USGS, USC&GS, U. S. Forest Service, and U.S. Bureau of Reclamation
Topography by photogrammetric methods from aerial photographs taken 1963. Field checked 1964
Polyconic projection. 1927 North American datum
10,000-foot grid based on Wyoming coordinate system, east central zone
1000-meter Universal Transverse Mercator grid ticks, zone 12, shown in blue
Fine red dashed lines indicate selected fence lines
Certain land lines are omitted because of insufficient data
Areas covered by dashed light-blue pattern are subject to controlled inundation



CONTOUR INTERVAL 20 FEET
DOTTED LINES REPRESENT 10-FOOT CONTOURS
NATIONAL GEODETIC VERTICAL DATUM OF 1929

THIS MAP COMPLIES WITH NATIONAL MAP ACCURACY STANDARDS
FOR SALE BY U.S. GEOLOGICAL SURVEY, P.O. BOX 25296, DENVER, COLORADO 80225
A FOLDER DESCRIBING TOPOGRAPHIC MAPS AND SYMBOLS IS AVAILABLE ON REQUEST



ROAD CLASSIFICATION
Medium duty ——— Light-duty ———
Unimproved dirt - - - - -
U.S. Route

KANE, WYO.
N4445-W10807.5/7.5
1964

DMA 4373 I SW-SERIES V874

RECEIVED

FEB 20 1970

USGS MAIL
HISTORICAL MAP ARCHIVES

