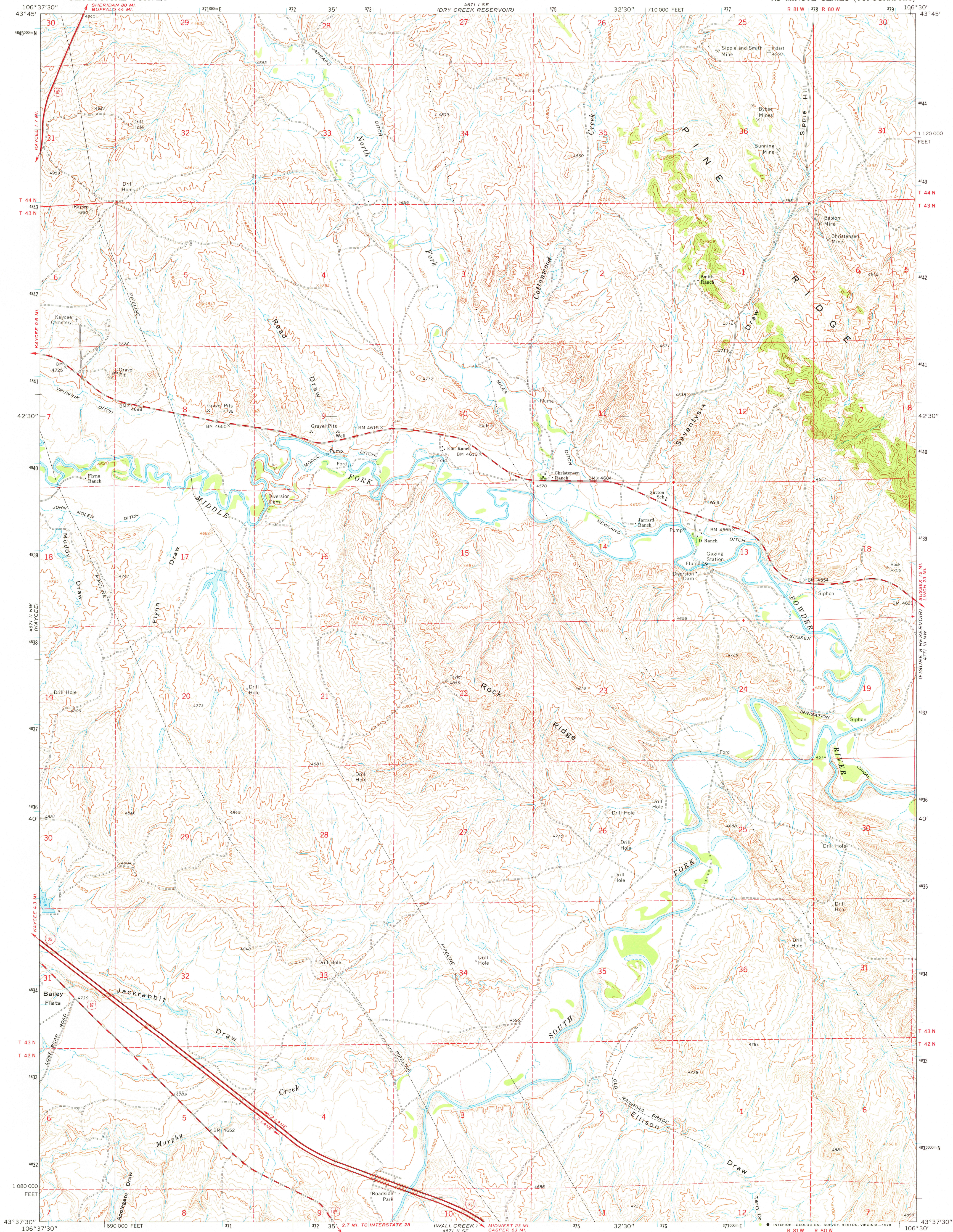
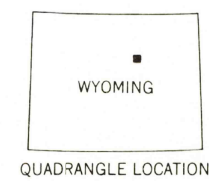
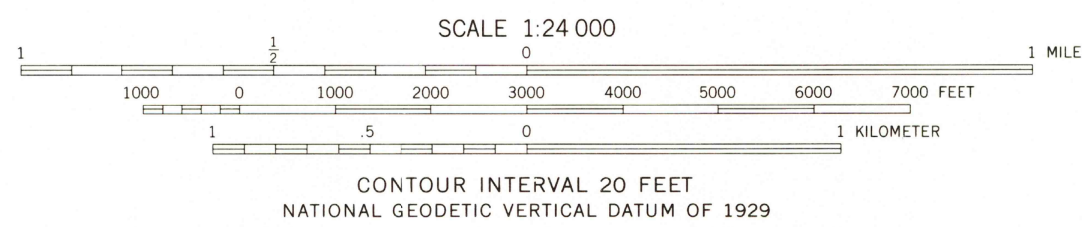
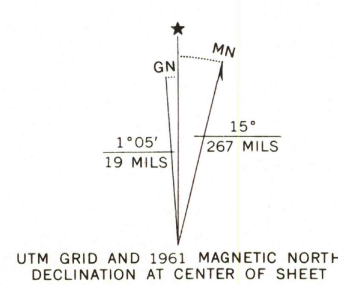


UNITED STATES  
DEPARTMENT OF THE INTERIOR  
GEOLOGICAL SURVEY

KAYCEE NE QUADRANGLE  
WYOMING—JOHNSON CO.  
7.5 MINUTE SERIES (TOPOGRAPHIC)



Mapped, edited, and published by the Geological Survey  
Control by USGS, USC&GS, and U. S. Bureau of Reclamation  
Topography by photogrammetric methods from aerial  
photographs taken 1956 and 1957. Field checked 1961  
Polyconic projection. 1927 North American datum  
10,000-foot grid based on Wyoming coordinate system,  
east central zone  
1000-meter Universal Transverse Mercator grid ticks,  
zone 13, shown in blue  
Fine red dashed lines indicate selected fence lines



ROAD CLASSIFICATION	
Heavy-duty	Light-duty
Medium-duty	Unimproved dirt
Interstate Route	U. S. Route

THIS MAP COMPLIES WITH NATIONAL MAP ACCURACY STANDARDS  
FOR SALE BY U. S. GEOLOGICAL SURVEY, DENVER, COLORADO 80225, OR RESTON, VIRGINIA 22092  
A FOLDER DESCRIBING TOPOGRAPHIC MAPS AND SYMBOLS IS AVAILABLE ON REQUEST

USGS  
Current File  
Topographic Division

KAYCEE NE, WYO. AUG 16 1978  
N4337.5—W10630/7.5

1961  
AMS 4671 II NE—SERIES W874

RETURN TO:  
USGS AND HISTORICAL MAP ARCHIVES