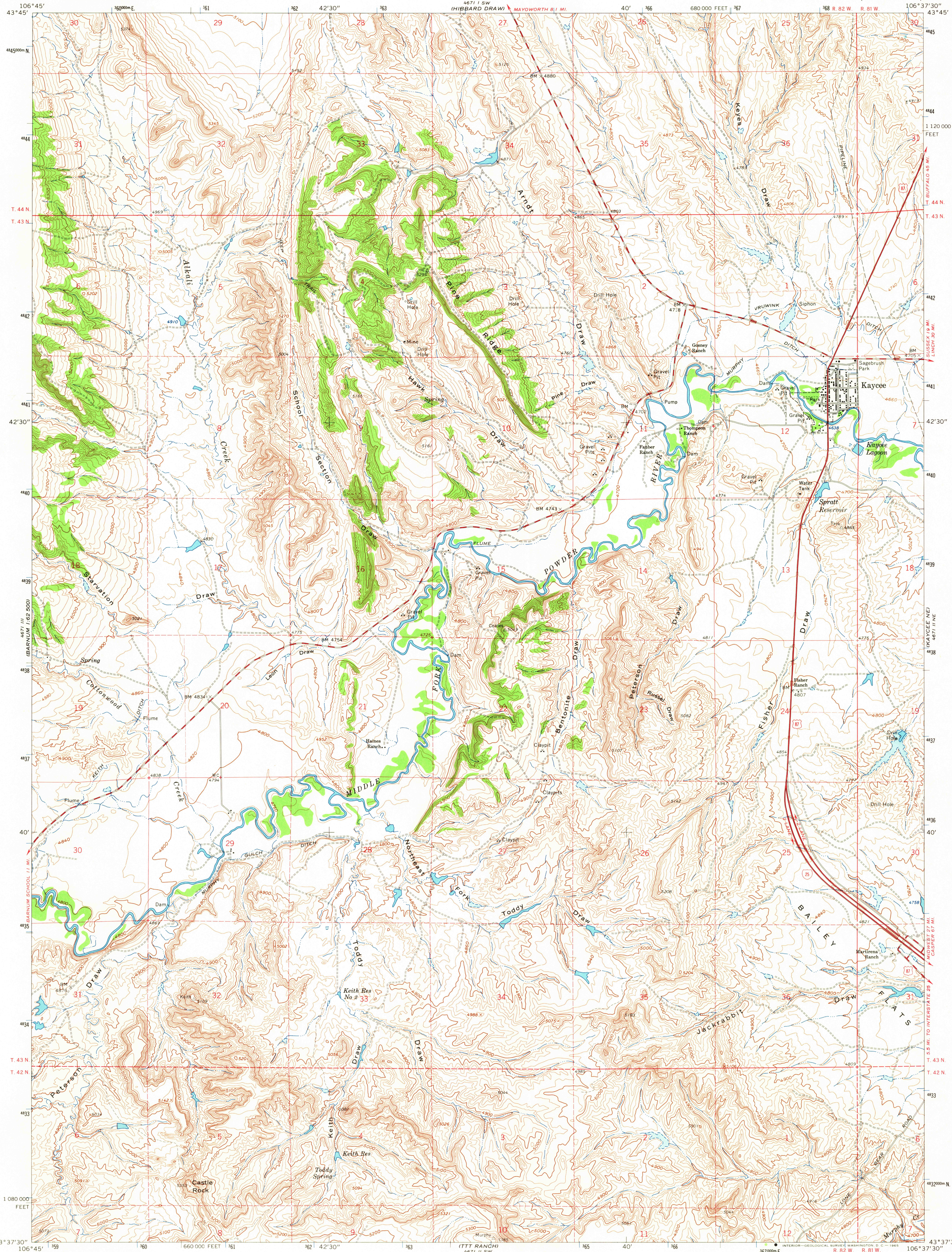
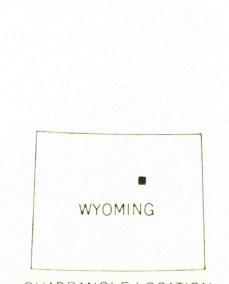
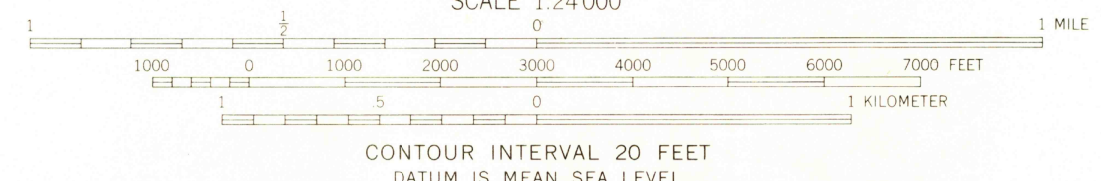
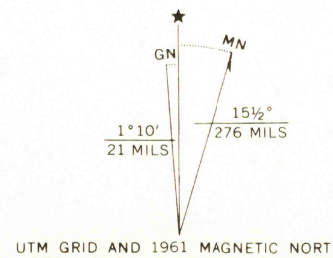


4671 I SE  
LORY CREEK RESERVOIR



Mapped, edited, and published by the Geological Survey  
Control by USGS, USC&GS and U. S. Bureau of Reclamation  
Topography by photogrammetric methods from aerial  
photographs taken 1956 and 1957. Field checked 1961  
Polyconic projection. 1927 North American datum  
10,000-foot grid based on Wyoming coordinate system,  
east central zone  
1000-meter Universal Transverse Mercator grid ticks,  
zone 13, shown in blue  
Fine red dashed lines indicate selected fence lines



ROAD CLASSIFICATION

Heavy-duty	Light-duty
Medium-duty	Unimproved dirt
Interstate Route	U. S. Route

THIS MAP COMPLIES WITH NATIONAL MAP ACCURACY STANDARDS  
FOR SALE BY U. S. GEOLOGICAL SURVEY, DENVER 25, COLORADO OR WASHINGTON 25, D. C.  
A FOLDER DESCRIBING TOPOGRAPHIC MAPS AND SYMBOLS IS AVAILABLE ON REQUEST

KAYCEE, WYO.  
N4337.5—W10637.5/7.5

1961  
AMS 4671 II NW—SERIES V874

RETURN TO:  
USGS AND HISTORICAL MAP ARCHIVES

APR 5 1965

2795

FILE COPY