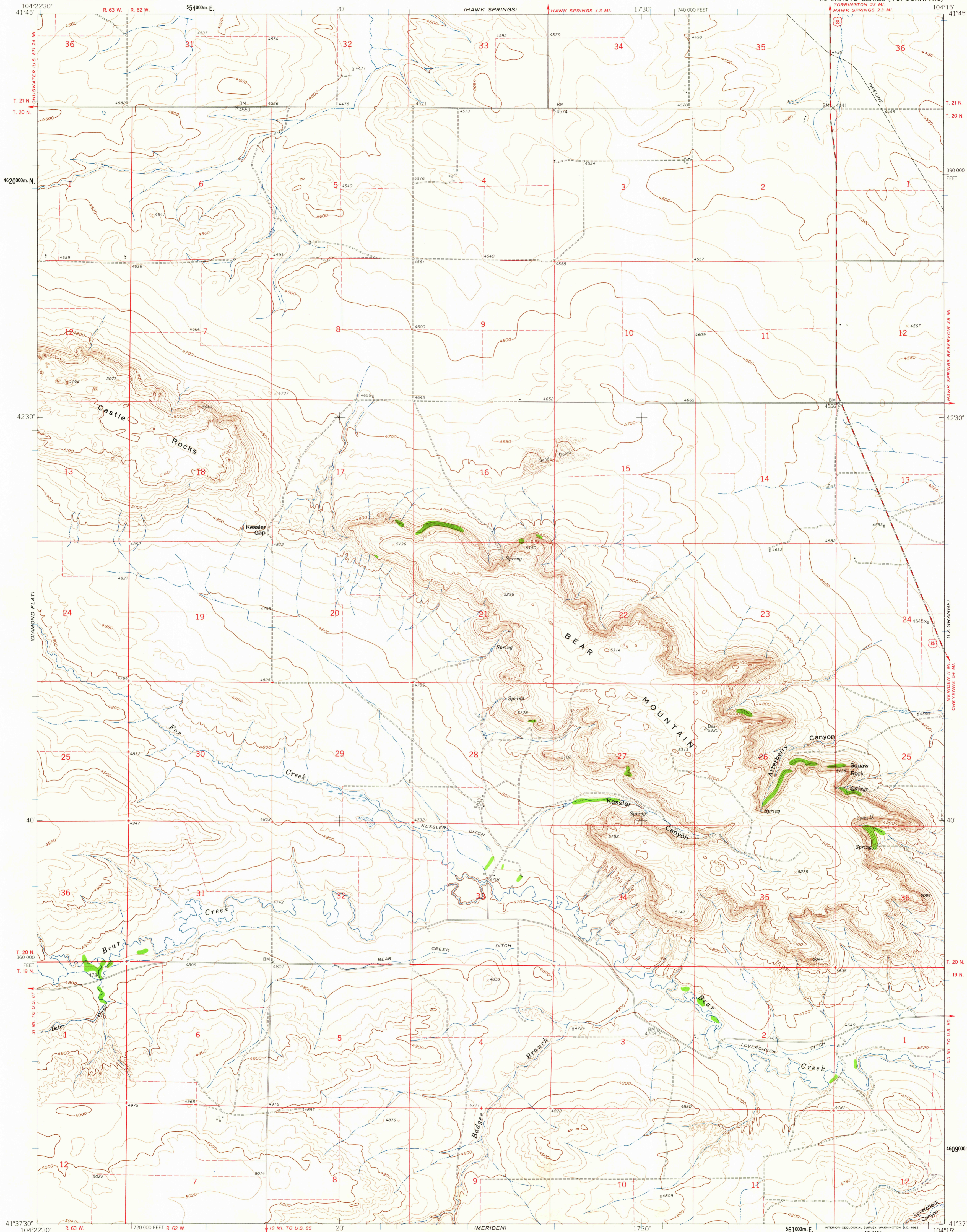


UNITED STATES
DEPARTMENT OF THE INTERIOR
GEOLOGICAL SURVEY

KESSLER GAP QUADRANGLE
WYOMING-GOSHEN CO.
7.5 MINUTE SERIES (TOPOGRAPHIC)



Mapped, edited, and published by the Geological Survey as part of the Department of the Interior program for the development of the Missouri River Basin Control by USGS and USC&GS
Topography by photogrammetric methods from aerial photographs taken 1957. Field checked 1960
Polyconic projection. 1927 North American datum 10,000-foot grid based on Wyoming coordinate system, east zone
1000 meter Universal Transverse Mercator grid ticks, zone 13, shown in blue
Fine red dashed lines indicate selected fence and field lines where generally visible on aerial photographs
This information is unchecked

SCALE 1:24,000
1 0 1000 2000 3000 4000 5000 6000 7000 FEET
1 0 1 2 3 4 5 6 7 8 9 10 KILOMETER
CONTOUR INTERVAL 20 FEET
DATUM IS MEAN SEA LEVEL

TRUE NORTH
MAGNETIC NORTH
APPROXIMATE MEAN DECLINATION, 1960

THIS MAP COMPLIES WITH NATIONAL MAP ACCURACY STANDARDS
FOR SALE BY U.S. GEOLOGICAL SURVEY, DENVER 25, COLORADO OR WASHINGTON 25, D.C.
A FOLDER DESCRIBING TOPOGRAPHIC MAPS AND SYMBOLS IS AVAILABLE ON REQUEST

ROAD CLASSIFICATION
Medium-duty Light-duty
Unimproved dirt
U.S. Route

WYOMING
QUADRANGLE LOCATION

KESSLER GAP, WYO.
N41375-W10415/75
1960

RETURN TO:
USGS AND HISTORICAL MAP ARCHIVES
FILE COPY
TOPOGRAPHIC DIVISION
JUL 23 1962