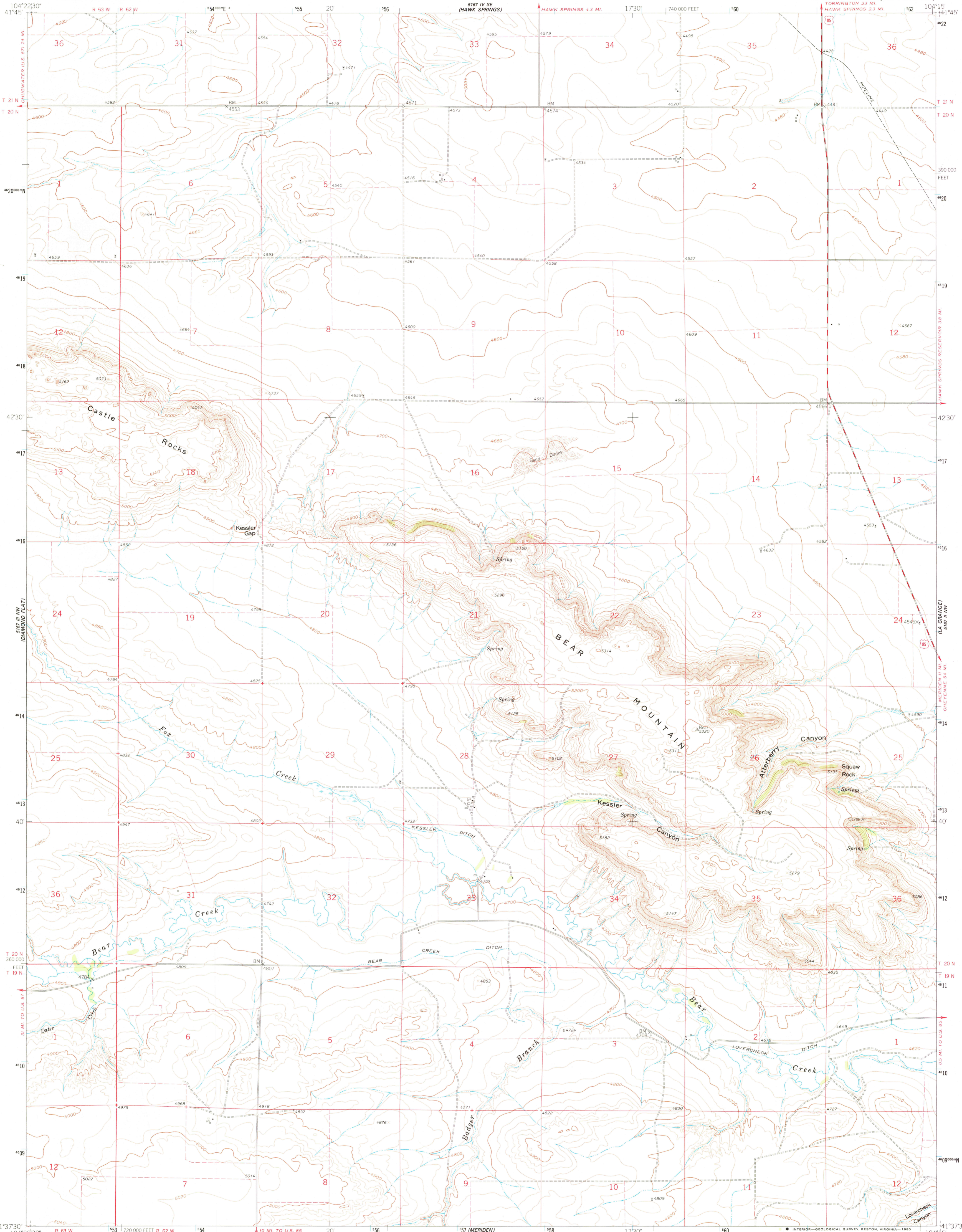


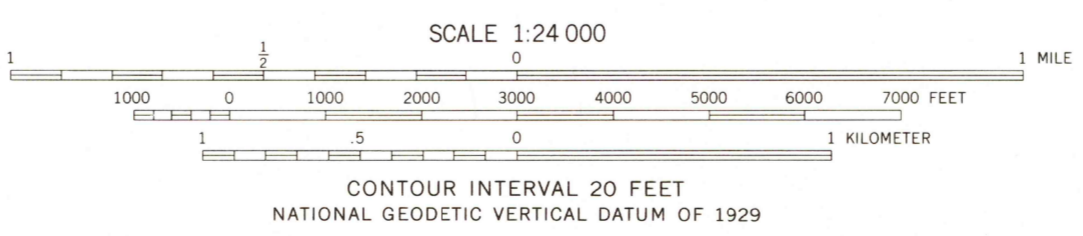
UNITED STATES
DEPARTMENT OF THE INTERIOR
GEOLOGICAL SURVEY

KESSLER GAP QUADRANGLE
WYOMING-GOSHEN CO.
7.5 MINUTE SERIES (TOPOGRAPHIC)



Mapped, edited, and published by the Geological Survey as part of the Department of the Interior program for the development of the Missouri River Basin
Control by USGS and USC&GS
Topography by photogrammetric methods from aerial photographs taken 1957. Field checked 1960
Polyconic projection. 1927 North American datum
10,000-foot grid based on Wyoming coordinate system, east zone
1000-meter Universal Transverse Mercator grid ticks, zone 13, shown in blue
Fine red dashed lines indicate selected fence and field lines where generally visible on aerial photographs
This information is unchecked

Map photoinspected 1976
No major culture or drainage changes observed



ROAD CLASSIFICATION
Medium-duty ——— Light-duty ———
Unimproved dirt - - - - - U.S. Route

USGS
Historical File
Topographic Division

WYOMING
QUADRANGLE LOCATION

KESSLER GAP, WYO.
N41375-W10415,75

1960
PHOTOINSPECTED 1976
DMA 5167 III NE-SERIES V874

MAY 20 1980

1100

THIS MAP COMPLIES WITH NATIONAL MAP ACCURACY STANDARDS
FOR SALE BY U. S. GEOLOGICAL SURVEY, DENVER, COLORADO 80225, OR RESTON, VIRGINIA 22092
A FOLDER DESCRIBING TOPOGRAPHIC MAPS AND SYMBOLS IS AVAILABLE ON REQUEST

To place on the predicted North American Datum 1983
move the projection lines 8 meters north and
45 meters east as shown by dashed corner ticks

RETURN TO:
USGS AND HISTORICAL MAP ARCHIVES