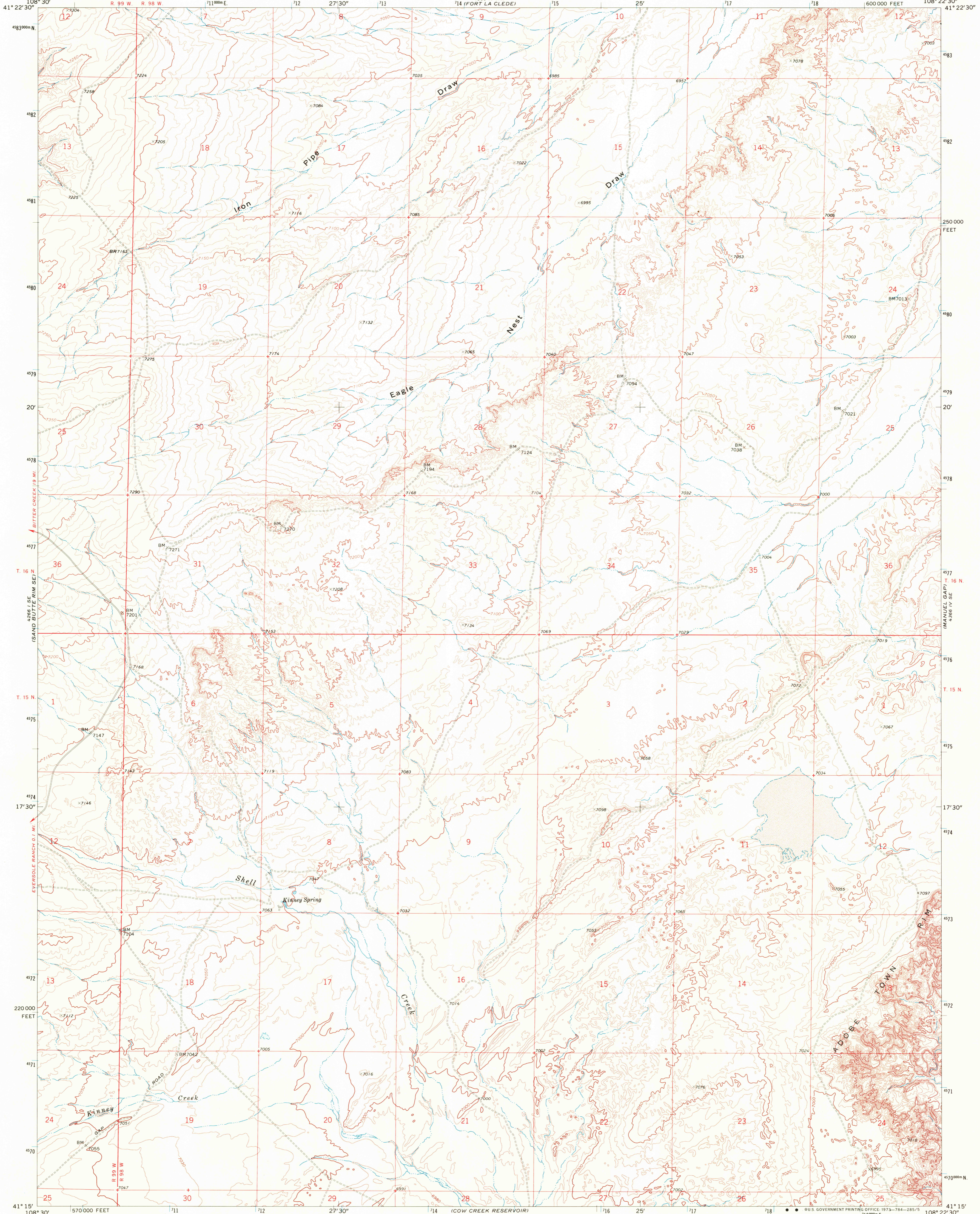
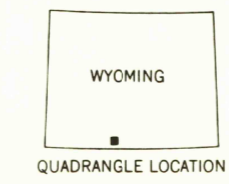
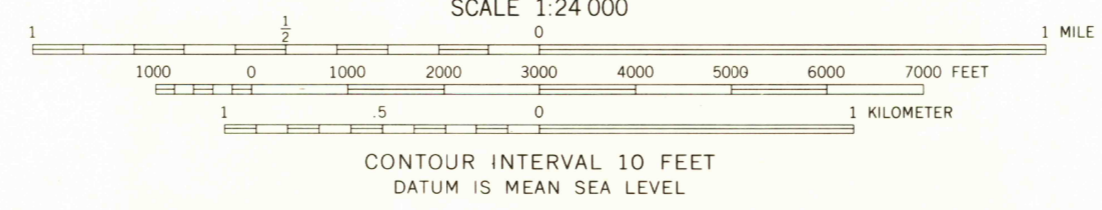
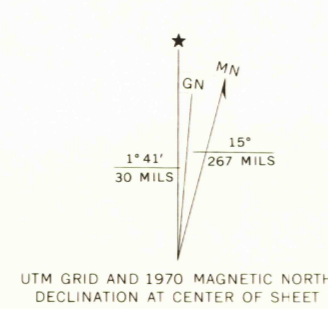


UNITED STATES
DEPARTMENT OF THE INTERIOR
GEOLOGICAL SURVEY

KINNEY SPRING QUADRANGLE
WYOMING—SWEETWATER CO.
7.5 MINUTE SERIES (TOPOGRAPHIC)



Mapped, edited, and published by the Geological Survey
Control by USGS and USC&GS
Topography by photogrammetric methods from aerial
photographs taken 1968. Field checked 1970.
Polyconic projection. 1927 North American datum
10,000-foot grid based on Wyoming coordinate system,
west central zone
1000-meter Universal Transverse Mercator grid ticks,
zone 12, shown in blue



ROAD CLASSIFICATION
Primary highway, hard surface
Secondary highway, hard surface
Light duty road, hard or improved surface
Unimproved road
Interstate Route
U. S. Route
State Route

THIS MAP COMPLIES WITH NATIONAL MAP ACCURACY STANDARDS
FOR SALE BY U. S. GEOLOGICAL SURVEY, DENVER, COLORADO 80225, OR WASHINGTON, D. C. 20242
A FOLDER DESCRIBING TOPOGRAPHIC MAPS AND SYMBOLS IS AVAILABLE ON REQUEST

USGS
Historical File
Topographic Division
KINNEY SPRING, WYO.
N4115-W10822.5/7.5
1970
AMS 4366 IV SW—SERIES V874

JAN 3 1975

RETURN TO:
USGS AND HISTORICAL MAP ARCHIVES