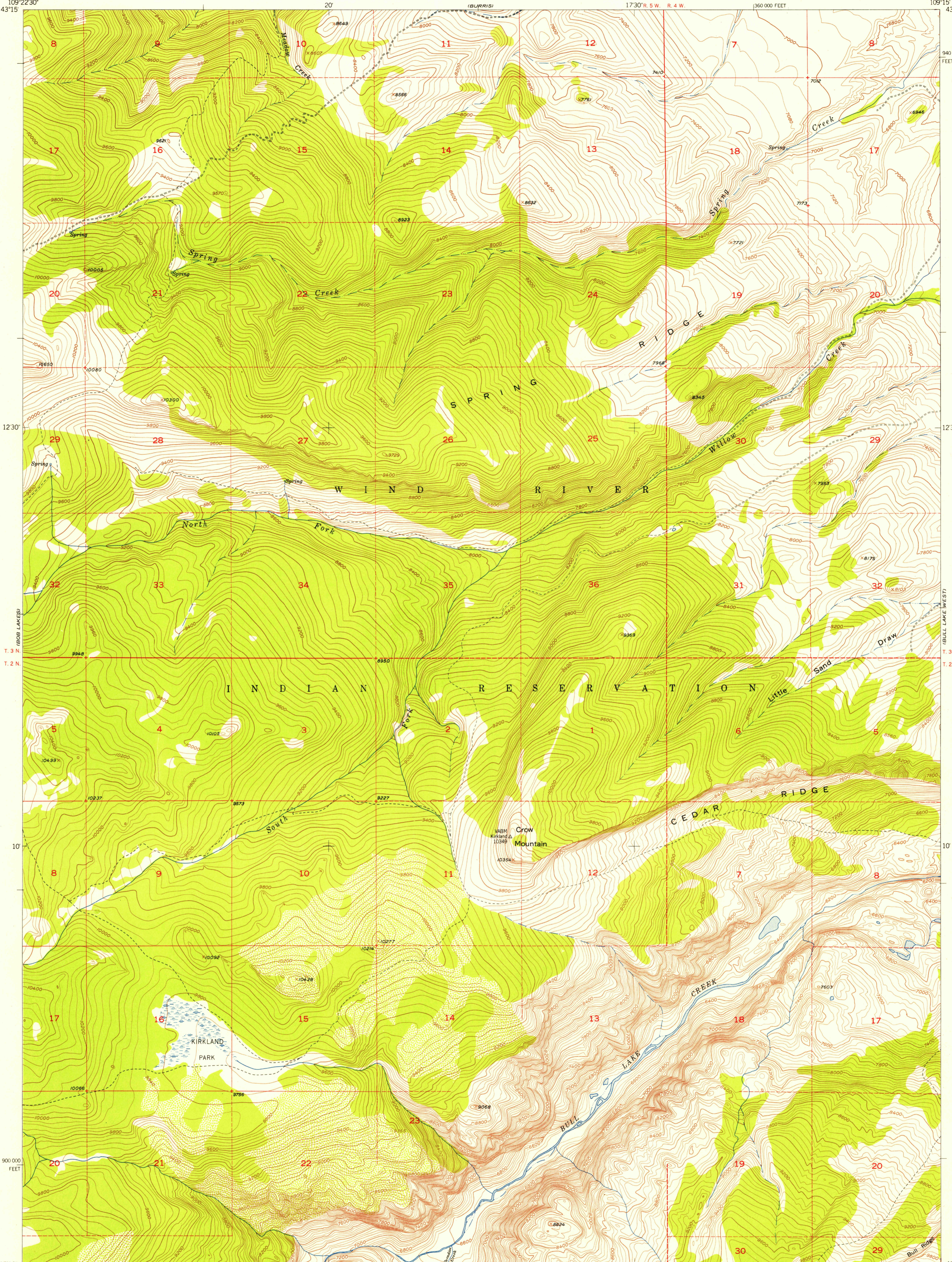


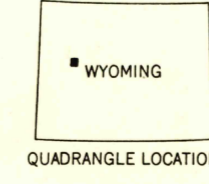
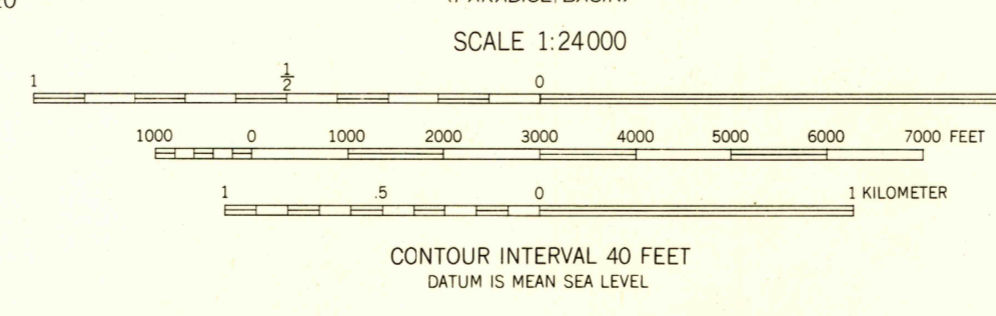
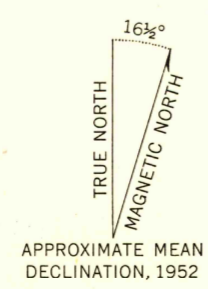
U.S.G.S.
FILE COPY
Reproduction and Editing



BULL LAKE WEST 17

ST. LAWRENCE BASIN

Mapped, edited, and published by the Geological Survey as part of the Department of the Interior program for the development of the Missouri River Basin Control by USGS and USC&GS
Topography from aerial photographs by multiplex methods Aerial photographs taken 1949. Field check 1952
Polyconic projection. 1927 North American datum 10,000-foot grid based on Wyoming coordinate system, west central zone
Dashed land lines indicate approximate locations Land lines unsurveyed in parts of T. 2 N., R. 4 W. and T. 2 N., R. 5 W.
Unchecked elevations are shown in brown



ROAD CLASSIFICATION

Heavy-duty	4 LANE 16 LANE	Light-duty	2 LANE 16 LANE
Medium-duty	4 LANE 16 LANE	Unimproved dirt	-----
U. S. Route	⬢	State Route	○

KIRKLAND PARK, WYO.
N4307.5-W10915/7.5
1952

THIS MAP COMPLES WITH NATIONAL MAP ACCURACY STANDARDS
FOR SALE BY U. S. GEOLOGICAL SURVEY, FEDERAL CENTER, DENVER, COLORADO OR WASHINGTON 25, D. C.
A FOLDER DESCRIBING TOPOGRAPHIC MAPS AND SYMBOLS IS AVAILABLE ON REQUEST

U.S.G.S.
FILE COPY
Reproduction and Editing

RETURN TO:
USGS AND HISTORICAL MAP ARCHIVES