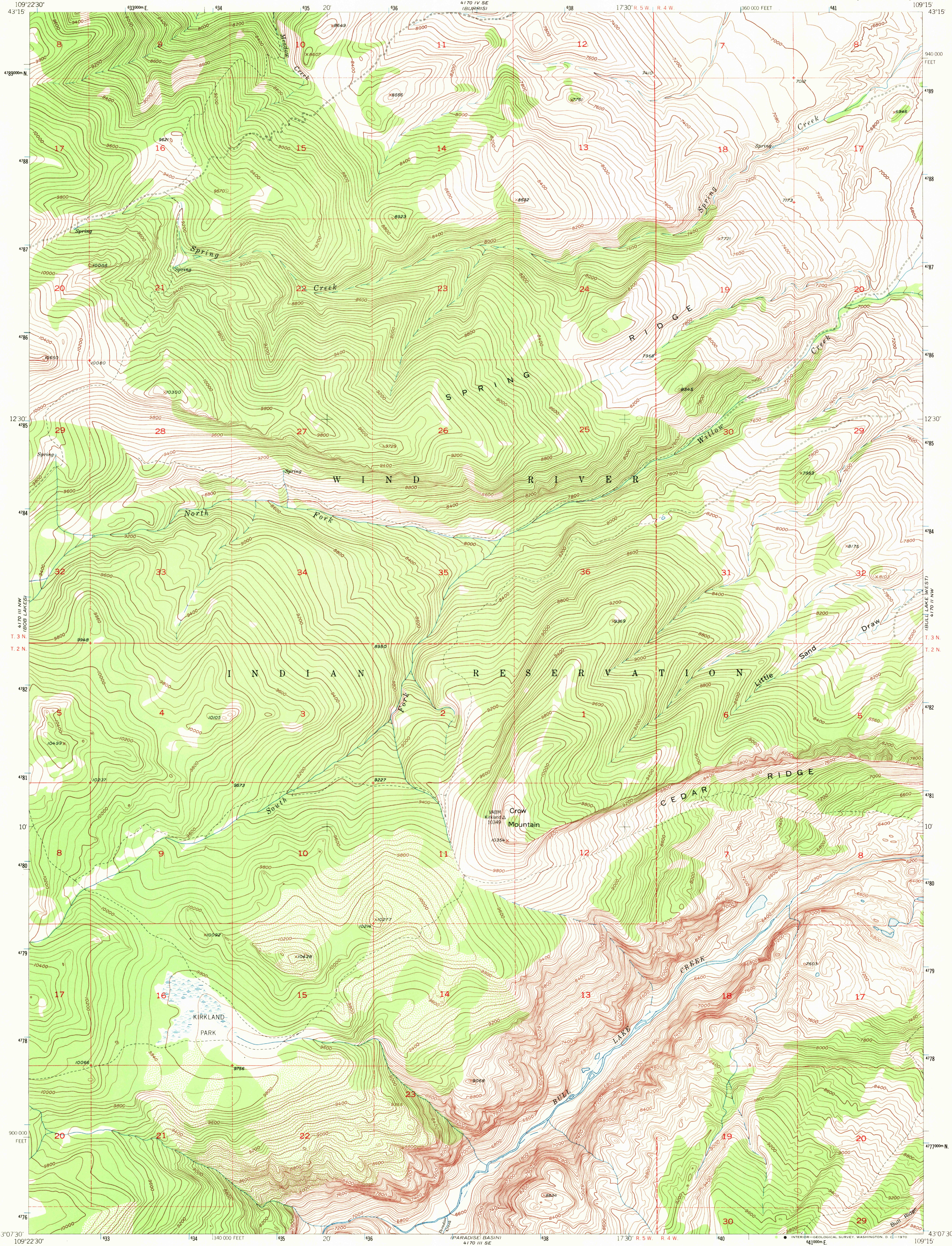


UNITED STATES
DEPARTMENT OF THE INTERIOR
GEOLOGICAL SURVEY

KIRKLAND PARK QUADRANGLE
WYOMING-FREMONT CO
7.5 MINUTE SERIES (TOPOGRAPHIC)



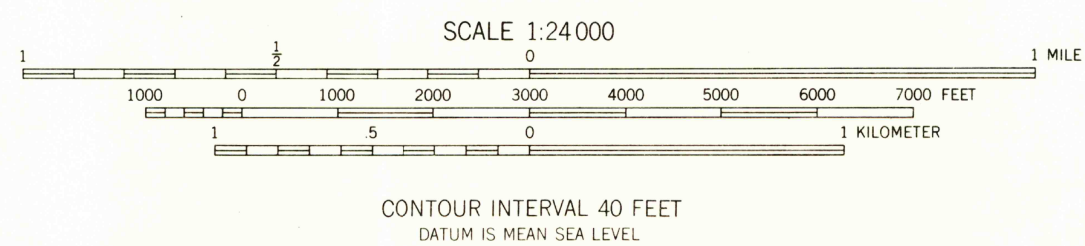
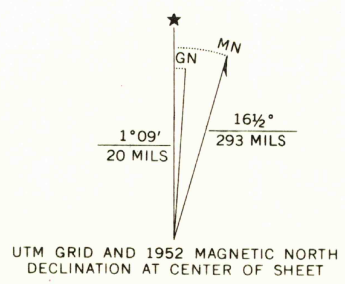
Mapped, edited, and published by the Geological Survey as part of the Department of the Interior program for the development of the Missouri River Basin

Control by USGS and USC&GS
Topography from aerial photographs by multiplex methods
Aerial photographs taken 1949. Field check 1952

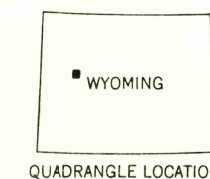
Polyconic projection. 1927 North American datum
10,000 foot grid based on Wyoming coordinate system, west central zone

Dashed land lines indicate approximate locations
Land lines unsurveyed in parts of T.2 N. - R.4 W. and T.2 N. - R.5 W.

Unchecked elevations are shown in brown
1000-meter Universal Transverse Mercator grid ticks, zone 12, shown in blue



SCALE 1:24 000
CONTOUR INTERVAL 40 FEET
DATUM IS MEAN SEA LEVEL



QUADRANGLE LOCATION

ROAD CLASSIFICATION

Heavy-duty	4 LANE 16 LANE	Light-duty
Medium-duty	4 LANE 16 LANE	Unimproved dirt
U. S. Route		Slate Route

KIRKLAND PARK, WYO.
N4307.5 - W10915.7.5

U.S.G.S.
FILE COPY
TOPOGRAPHIC DIVISION

1952
AMS 4170 III NE - SERIES V874

THIS MAP COMPLIES WITH NATIONAL MAP ACCURACY STANDARDS
FOR SALE BY U. S. GEOLOGICAL SURVEY, DENVER, COLORADO 80225, OR WASHINGTON, D. C. 20242
A FOLDER DESCRIBING TOPOGRAPHIC MAPS AND SYMBOLS IS AVAILABLE ON REQUEST

RETURN TO:
USGS AND HISTORICAL MAP ARCHIVES

SEP 8 1970