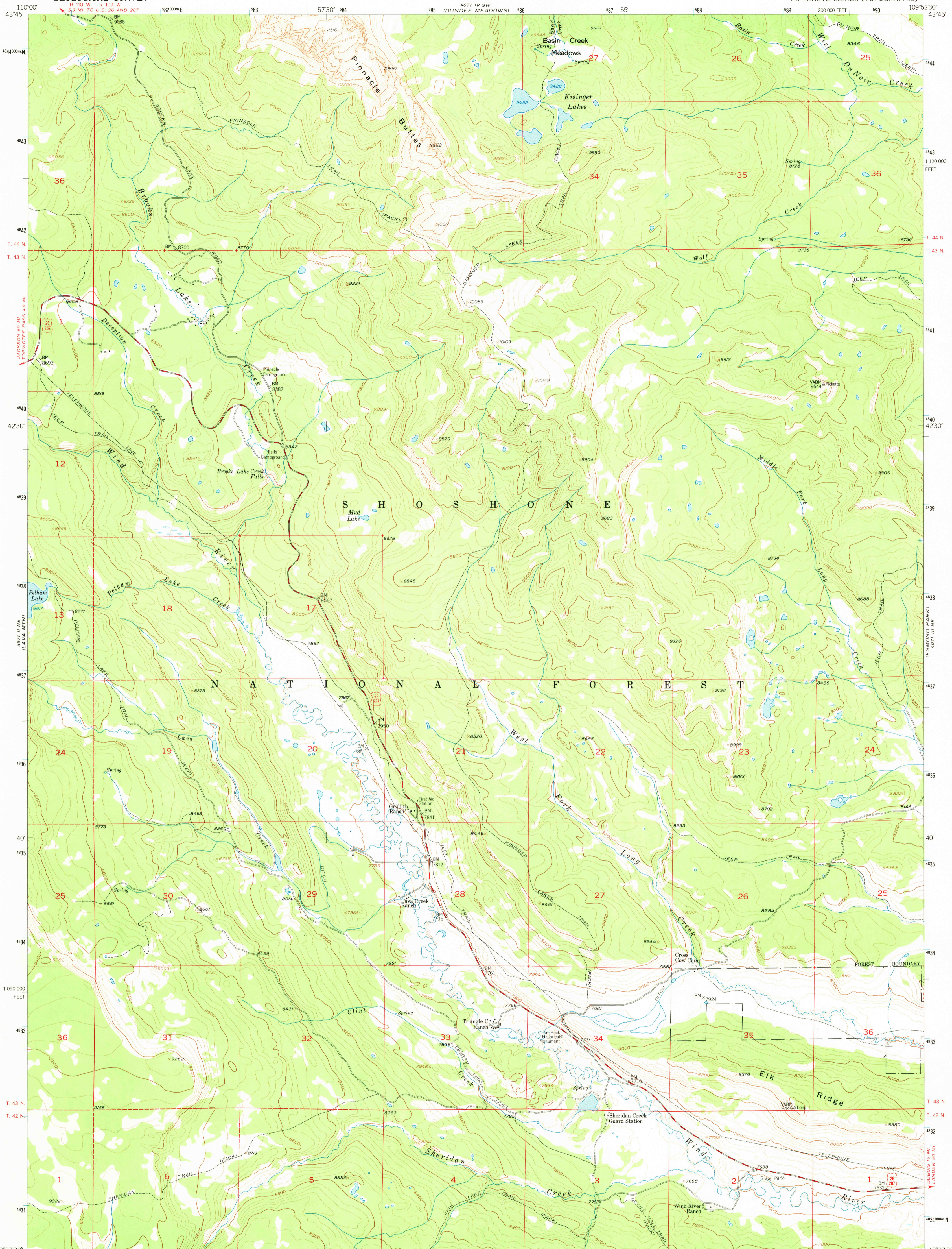
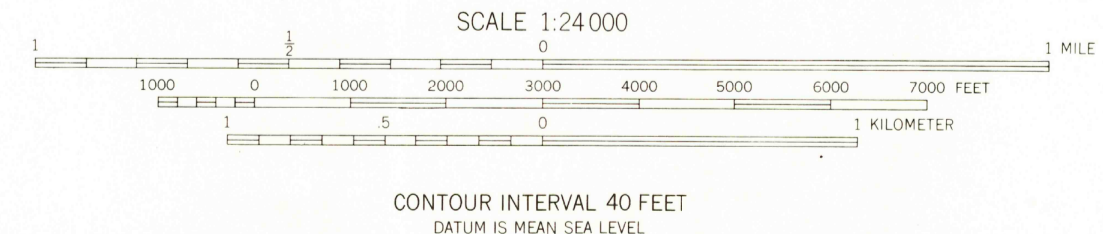
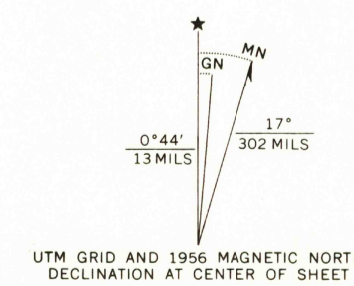


4071 IV SE  
(SHOSHONE PASS)



Mapped, edited, and published by the Geological Survey as part of the Department of the Interior program for the development of the Missouri River Basin. Control by USGS and USC&GS. Topography from aerial photographs by photogrammetric methods. Aerial photographs taken 1953. Field check 1956. Polyconic projection. 1927 North American datum. 10,000-foot grid based on Wyoming coordinate system, west central zone. 1000-meter Universal Transverse Mercator grid ticks, zone 12, shown in blue. Dashed land lines indicate approximate locations. Land lines unsurveyed in T. 44N., R. 110W., and in parts of Ts. 43 and 44 N., R. 109 W. Unchecked elevations are shown in brown.



ROAD CLASSIFICATION	
Medium-duty	Light-duty
Unimproved dirt	U.S. Route

THIS MAP COMPLIES WITH NATIONAL MAP ACCURACY STANDARDS. FOR SALE BY U.S. GEOLOGICAL SURVEY, DENVER, COLORADO 80225, OR WASHINGTON, D.C. 20242. A FOLDER DESCRIBING TOPOGRAPHIC MAPS AND SYMBOLS IS AVAILABLE ON REQUEST.

USGS HISTORICAL FILE TOPOGRAPHIC DIVISION

KISINGER LAKES, WYO.  
N4337.5-W10952.5/7.5  
1956  
AMS 4071 III NW-SERIES W874

JAN 26 1973  
146

RETURN TO:  
USGS AND HISTORICAL MAP ARCHIVES