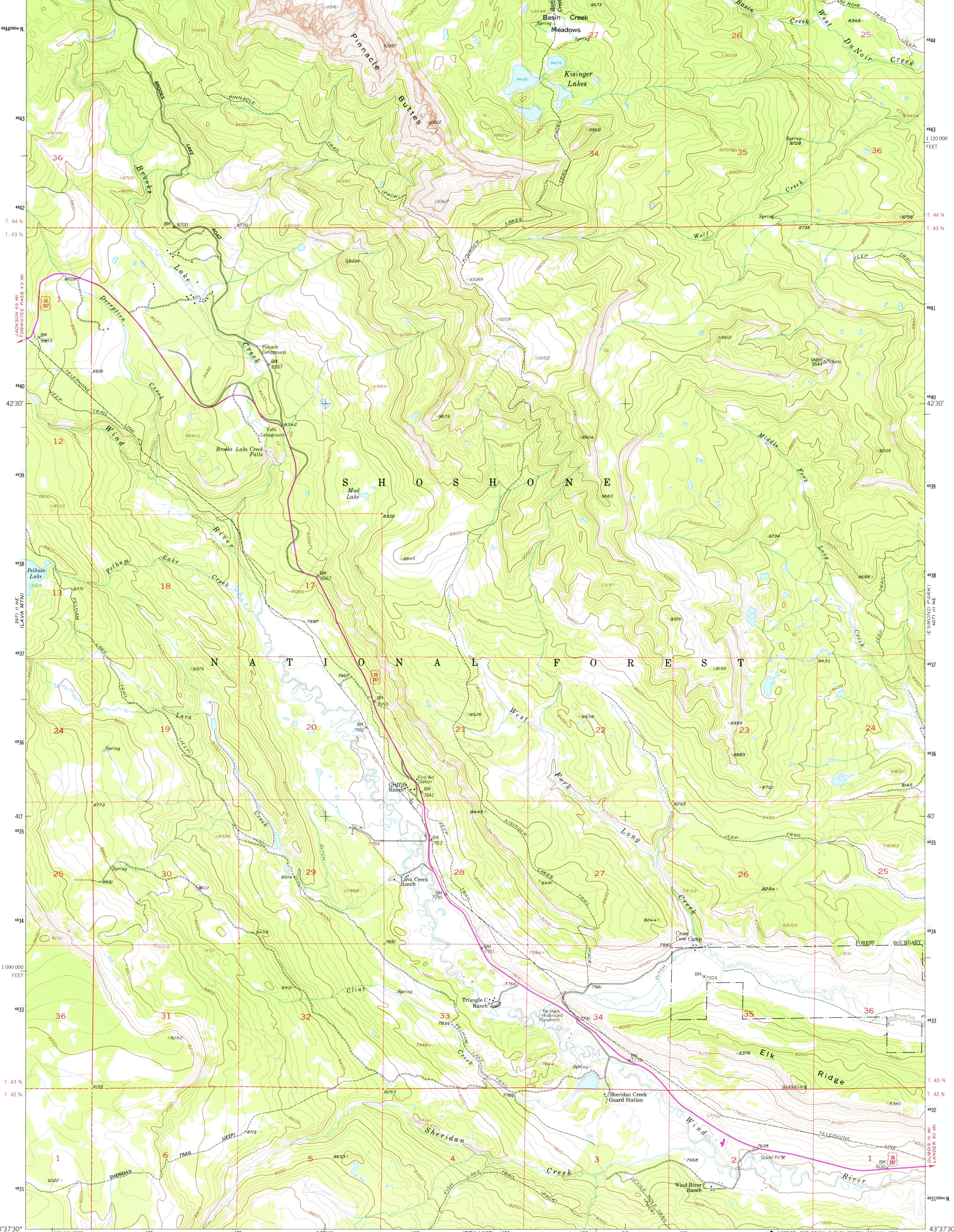


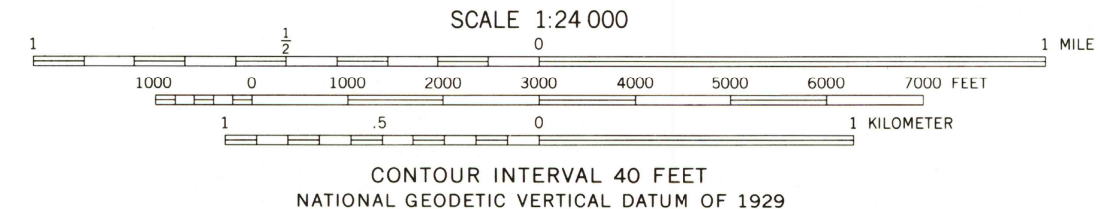
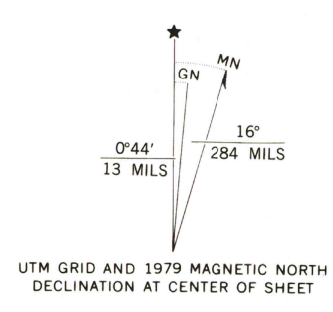
110°00' 43°45' 1170000 FEET R. 110 W. R. 109 W. 57°30' 182 183 184 185 186 187 188 189 200000 FEET 109°52'30" 43°45'



43°37'30" 110°00' 170000 FEET R. 110 W. R. 109 W. 57°30' 182 183 184 185 186 187 188 189 200000 FEET 109°52'30" 43°37'30"

Mapped, edited, and published by the Geological Survey as part of the Department of the Interior program for the development of the Missouri River Basin Control by USGS and NOS/NOAA
Topography from aerial photographs by photogrammetric methods aerial photographs taken 1953. Field checked 1956.
Polyconic projection. 1927 North American datum 10,000-foot grid based on Wyoming coordinate system, west central zone
1000 meter Universal Transverse Mercator grid ticks, zone 12, shown in blue

Dashed land lines indicate approximate locations of land lines unsurveyed in T. 44N., R. 110 W., and in parts of Ts. 43 and 44 N., R. 109 W.
There may be private inholdings within the boundaries of the National or State reservations shown on this map
Unchecked elevations are shown in brown



ROAD CLASSIFICATION
Primary highway, hard surface
Secondary highway, hard surface
Interstate Route
U.S. Route
State Route
Light-duty road, hard or improved surface
Unimproved road
Historical File
Topographic Division
KISINGER LAKES, WYO.
N4337.5-W10952.5/7.5
1956
PHOTOREVISED 1979
DMA 4071 III NW-SERIES V874

THIS MAP COMPLIES WITH NATIONAL MAP ACCURACY STANDARDS FOR SALE BY U. S. GEOLOGICAL SURVEY, DENVER, COLORADO 80225, OR RESTON, VIRGINIA 22092
A FOLDER DESCRIBING TOPOGRAPHIC MAPS AND SYMBOLS IS AVAILABLE ON REQUEST
Revisions shown in purple and compilation of woodland areas compiled from aerial photographs taken 1975 and other source data. This information not field checked. Map edited 1979
QUADRANGLE LOCATION
WYOMING
MAY 13 1980

RETURN TO: USGS AND HISTORICAL MAP ARCHIVES

2200