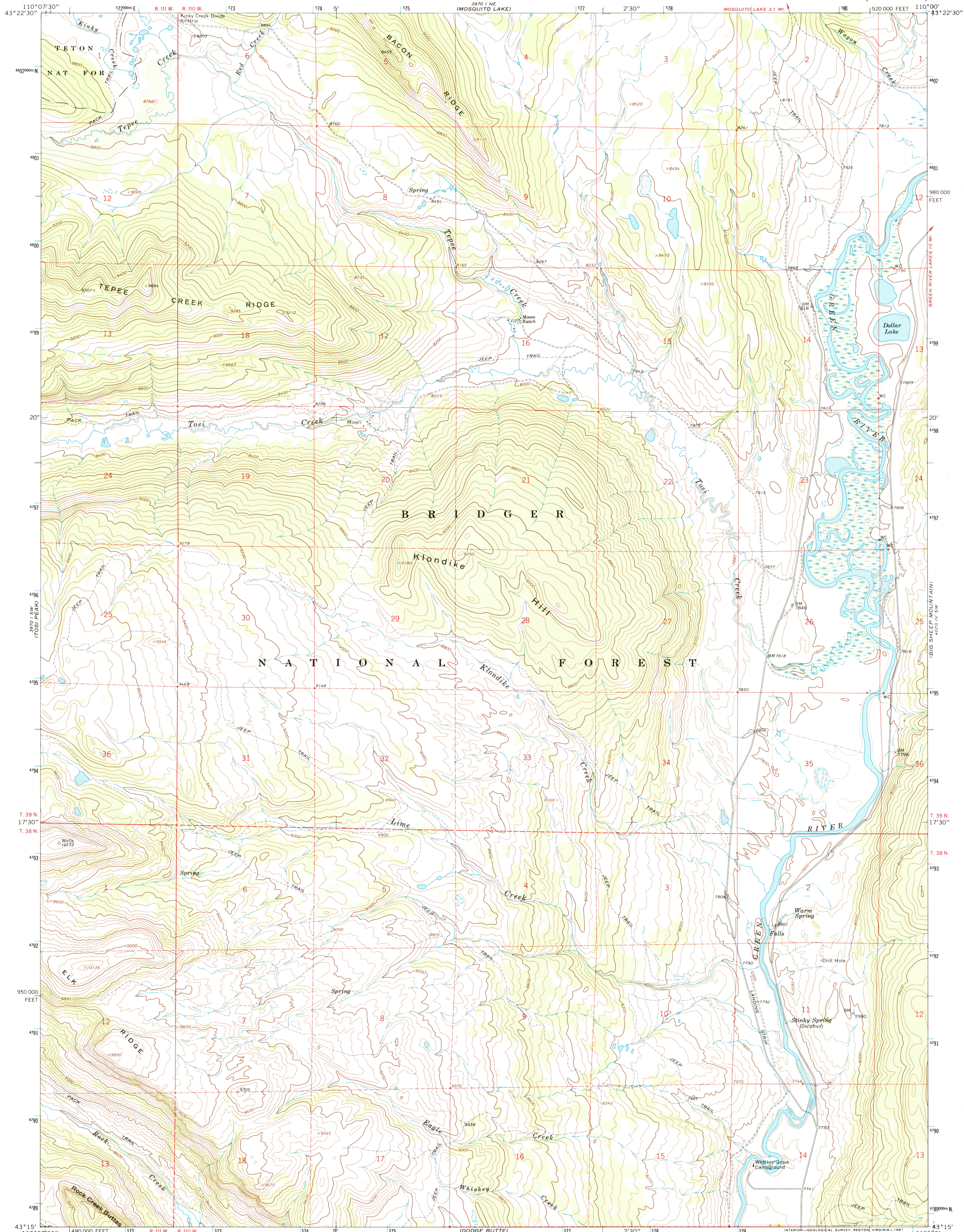




U.S. DEPARTMENT OF THE INTERIOR  
U.S. GEOLOGICAL SURVEY

KLONDIKE HILL QUADRANGLE  
WYOMING—SUBLETTE CO.  
7.5 MINUTE SERIES (TOPOGRAPHIC)

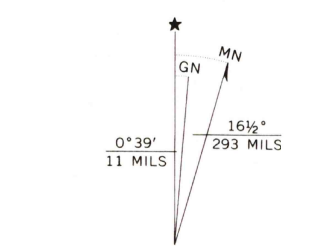


Mapped, edited, and published by the Geological Survey

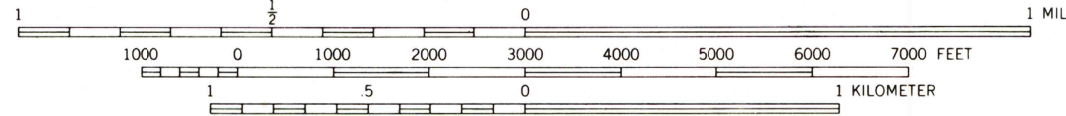
Control by USGS and USC&GS  
Topography by photogrammetric methods from aerial photographs taken 1966. Field checked 1967  
Polyconic projection. 1927 North American datum  
10,000-foot grid based on Wyoming coordinate system, west zone  
1000-meter Universal Transverse Mercator grid ticks, zone 12, shown in blue

Fine red dashed lines indicate selected fence lines  
To place on the predicted North American Datum 1983 move the projection lines 10 meters north and 60 meters east as shown by dashed corner ticks

There may be private inholdings within the boundaries of the National or State reservations shown on this map



30% TOTAL RECYCLED FIBER



CONTOUR INTERVAL 40 FEET  
DOTTED LINES REPRESENT 20-FOOT CONTOURS  
NATIONAL GEODETIC VERTICAL DATUM OF 1929

THIS MAP COMPLIES WITH MAP ACCURACY STANDARDS  
FOR SALE BY U.S. GEOLOGICAL SURVEY  
P.O. BOX 25286, DENVER, COLORADO 80225  
A FOLDER DESCRIBING TOPOGRAPHIC MAPS AND SYMBOLS IS AVAILABLE ON REQUEST

ROAD CLASSIFICATION  
Light-duty ——— Unimproved dirt - - - - -

KLONDIKE HILL, WYO.  
N4315—W11000/7.5

1967

DMA 3970 I SE-SERIES V874

RECEIVED

SEP 3 0 2002

USGS NWU  
HISTORICAL MAP ARCHIVES



ISBN 0-607-60762-4  
9 780607 607623