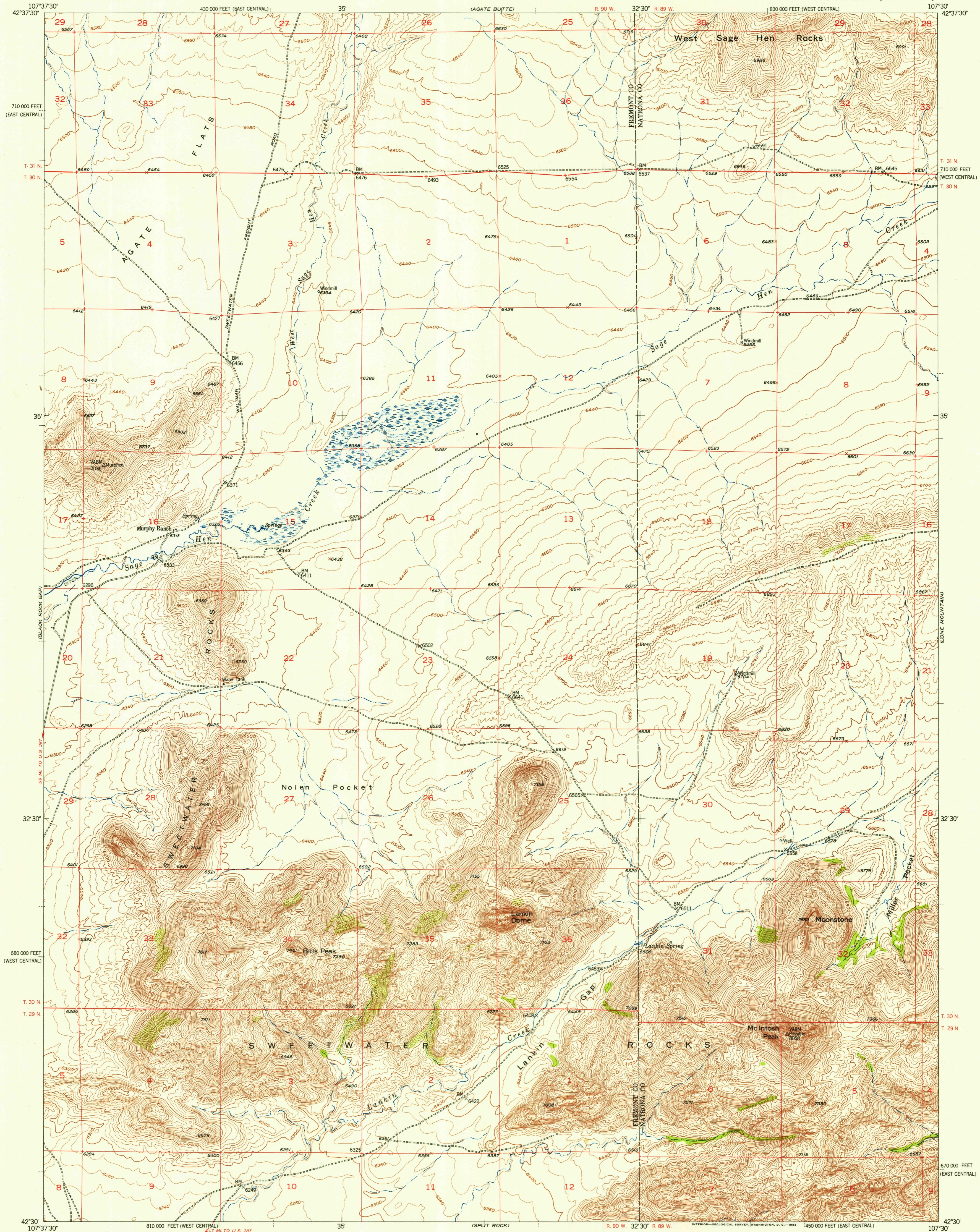
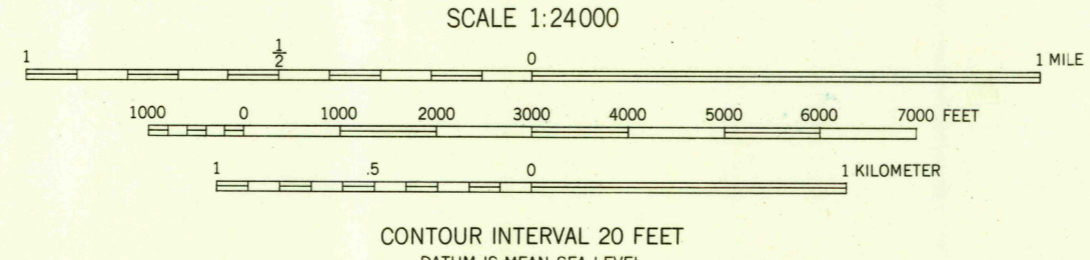
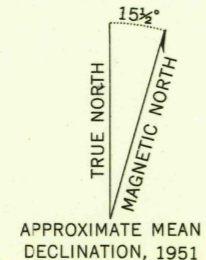


UNITED STATES  
DEPARTMENT OF THE INTERIOR  
GEOLOGICAL SURVEY

LANKIN DOME QUADRANGLE  
WYOMING  
7.5 MINUTE SERIES (TOPOGRAPHIC)

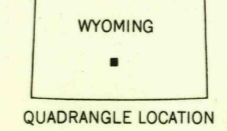


Mapped, edited, and published by the Geological Survey as part of the Department of the Interior program for the development of the Missouri River Basin. Control by USGS and USC&GS. Topography from aerial photographs by multiplex methods and by plane-table surveys 1951. Aerial photographs taken 1946-1947. Polyconic projection. 1927 North American datum. 10,000-foot grid based on Wyoming coordinate system, west central and east central zones. Dashed land lines indicate approximate locations.



ROAD CLASSIFICATION

Heavy-duty	4 LANE 16 LANE	Light-duty
Medium-duty	4 LANE 16 LANE	Unimproved dirt
U. S. Route		State Route



LANKIN DOME, WYO.  
N4230—W10730/7.5  
1951

FOR SALE BY U. S. GEOLOGICAL SURVEY, FEDERAL CENTER, DENVER, COLORADO OR WASHINGTON 25, D. C.  
A FOLDER DESCRIBING TOPOGRAPHIC MAPS AND SYMBOLS IS AVAILABLE ON REQUEST

RETURN TO:  
USGS AND HISTORICAL MAP ARCHIVES

NOV 12 1953