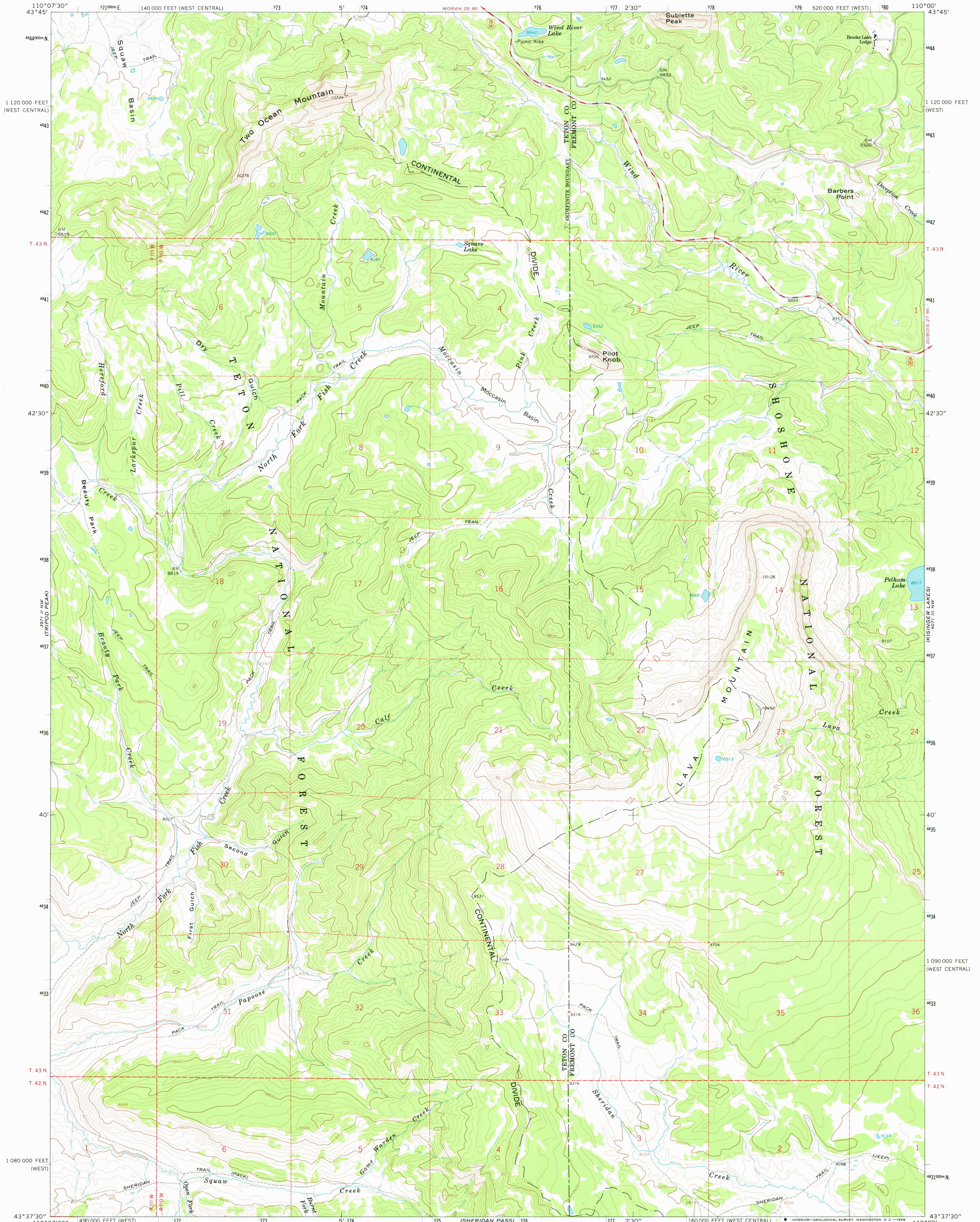
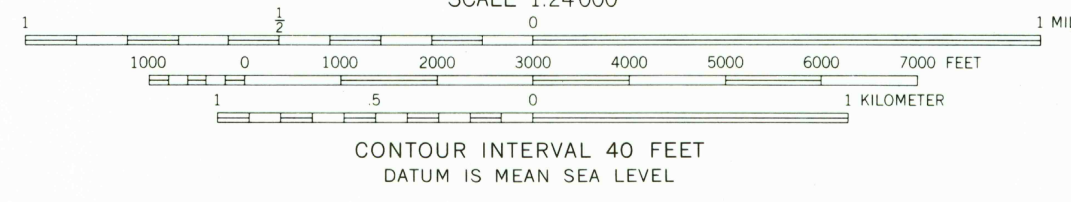
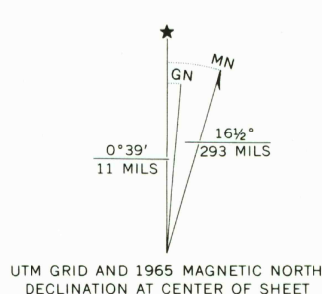


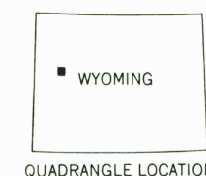
7071 IV, SW
BOUNDARY MEADOWS



Mapped, edited, and published by the Geological Survey
Control by USGS and USC&GS
Topography by photogrammetric methods from aerial
photographs taken 1964. Field checked 1965
Polyconic projection. 1927 North American datum
10,000-foot grids based on Wyoming coordinate system,
west and west central zones
1000-meter Universal Transverse Mercator grid ticks,
zone 12, shown in blue
Where omitted, land lines have not been established



CONTOUR INTERVAL 40 FEET
DATUM IS MEAN SEA LEVEL



ROAD CLASSIFICATION
Medium-duty ——— Light-duty ———
Unimproved dirt ———
U. S. Route

FEB 16 1978

LAVA MOUNTAIN, WYO.
N4337.5—W11000/7.5

1965
AMS 3971 II NE—SERIES V874

THIS MAP COMPLIES WITH NATIONAL MAP ACCURACY STANDARDS
FOR SALE BY U. S. GEOLOGICAL SURVEY, DENVER, COLORADO 80225, OR WASHINGTON, D. C. 20242
A FOLDER DESCRIBING TOPOGRAPHIC MAPS AND SYMBOLS IS AVAILABLE ON REQUEST

RETURN TO:
USGS AND HISTORICAL MAP ARCHIVES

2100