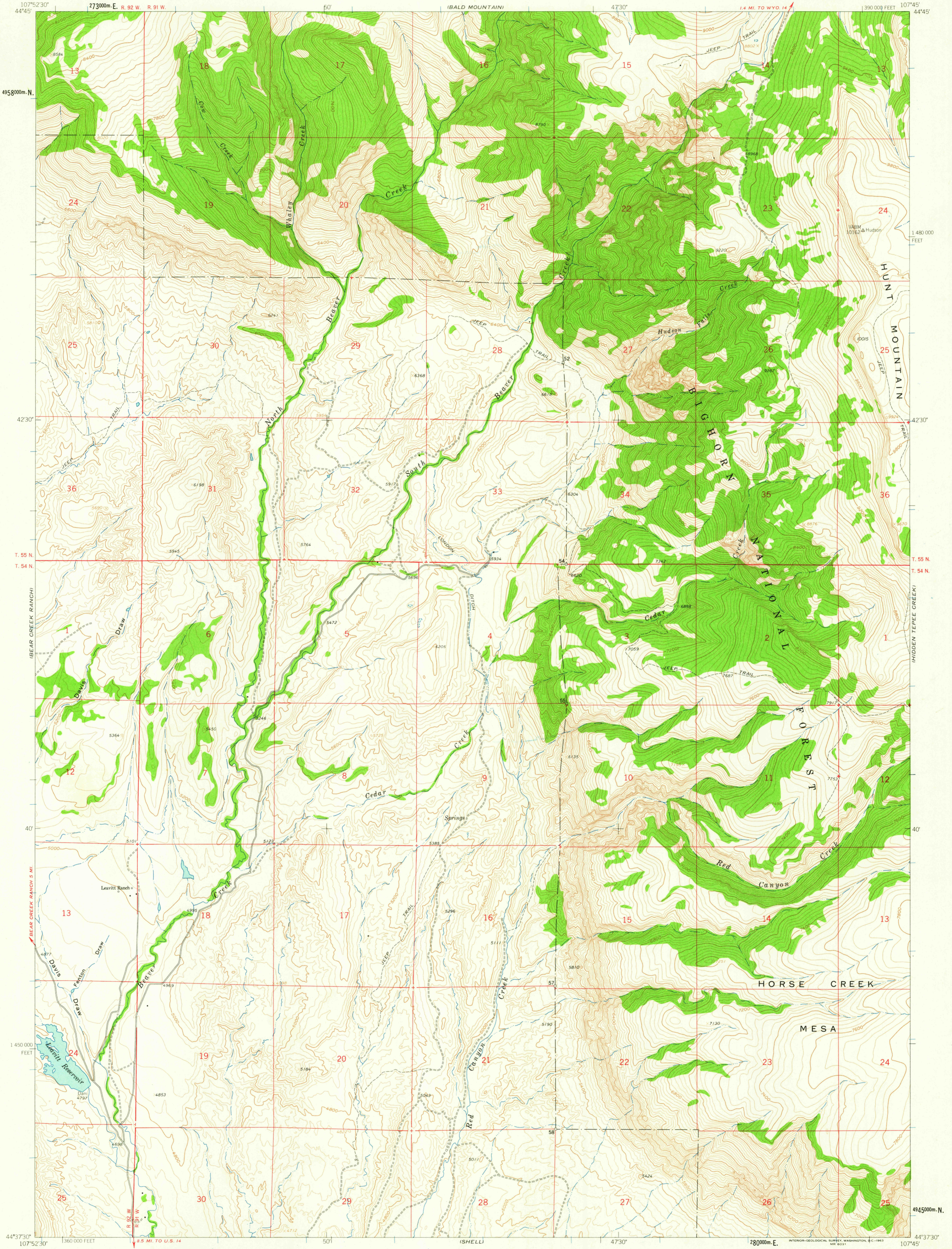


UNITED STATES
DEPARTMENT OF THE INTERIOR
GEOLOGICAL SURVEY

LEAVITT RESERVOIR QUADRANGLE
WYOMING-BIGHORN CO.
7.5 MINUTE SERIES (TOPOGRAPHIC)



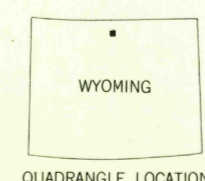
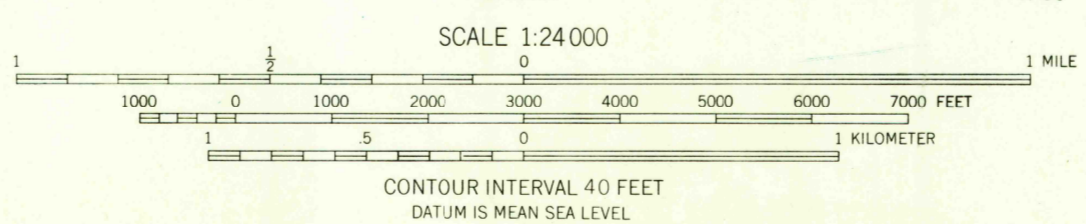
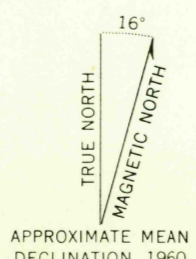
Mapped, edited, and published by the Geological Survey as part of the Department of the Interior program for the development of the Missouri River Basin

Control by USGS and USC&GS

Topography by photogrammetric methods from aerial photographs taken 1957. Field checked 1960

Polyconic projection. 1927 North American datum. 10,000-foot grid based on Wyoming coordinate system, east central zone

1000-meter Universal Transverse Mercator grid ticks, zone 13, shown in blue



ROAD CLASSIFICATION
Light-duty Unimproved dirt - - - - -

THIS MAP COMPLIES WITH NATIONAL MAP ACCURACY STANDARDS
FOR SALE BY U. S. GEOLOGICAL SURVEY, DENVER 25, COLORADO OR WASHINGTON 25, D. C.
A FOLDER DESCRIBING TOPOGRAPHIC MAPS AND SYMBOLS IS AVAILABLE ON REQUEST

LEAVITT RESERVOIR, WYO.
N4437.5-W10745/7.5
1960

U.S.G.S.
FILE COPY
TOPOGRAPHIC DIVISION

MAR 25 1963

RETURN TO:
USGS AND HISTORICAL MAP ARCHIVES