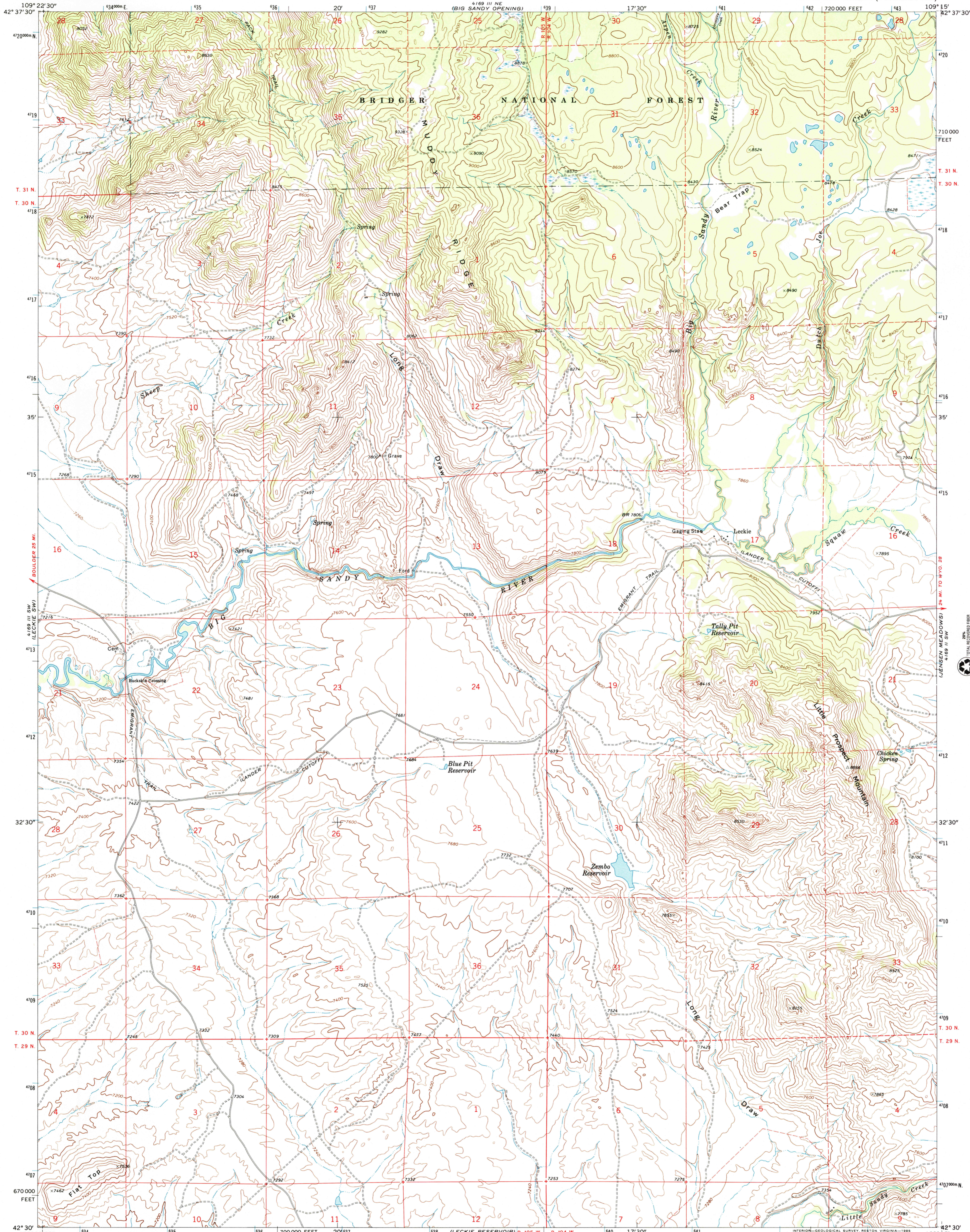




U.S. DEPARTMENT OF THE INTERIOR
U.S. GEOLOGICAL SURVEY

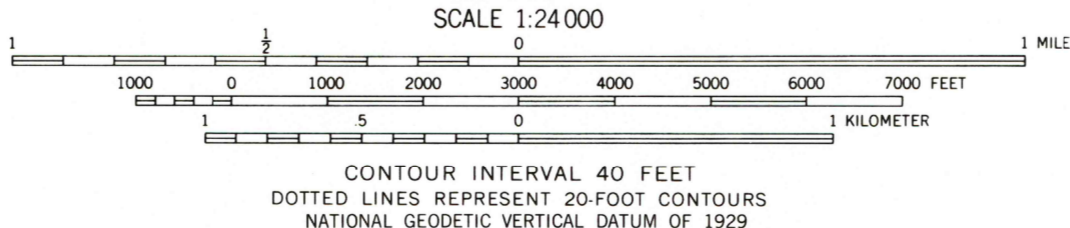
LECKIE QUADRANGLE
WYOMING—SUBLETTE CO.
7.5 MINUTE SERIES (TOPOGRAPHIC)



Mapped, edited, and published by the Geological Survey

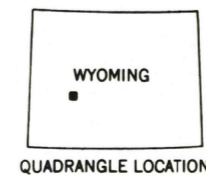
Control by USGS and USC&GS
Topography by photogrammetric methods from aerial photographs taken 1968. Field checked 1969
Polyconic projection, 1927 North American Datum
10,000-foot grid based on Wyoming coordinate system, west zone
1000-meter Universal Transverse Mercator grid ticks, zone 12, shown in blue
Fine red dashed lines indicate selected fence lines
To place on the predicted North American Datum 1983 move the projection lines 9 meters north and 58 meters east as shown by dashed corner ticks
There may be private inholdings within the boundaries of the National or State reservations shown on this map

Map photoinspected 1978
No major culture or drainage changes observed



ROAD CLASSIFICATION

Primary highway, hard surface	Light-duty road, hard or improved surface
Secondary highway, hard surface	Unimproved road
Interstate Route	U. S. Route
	State Route



LECKIE, WYO.
42109-E3-TF-024
1969
PHOTOINSPECTED 1978
DMA 4169 III SE-SERIES V874

RECEIVED
JAN 17 2003

U.S. GEOLOGICAL SURVEY
HISTORICAL MAP ARCHIVES

