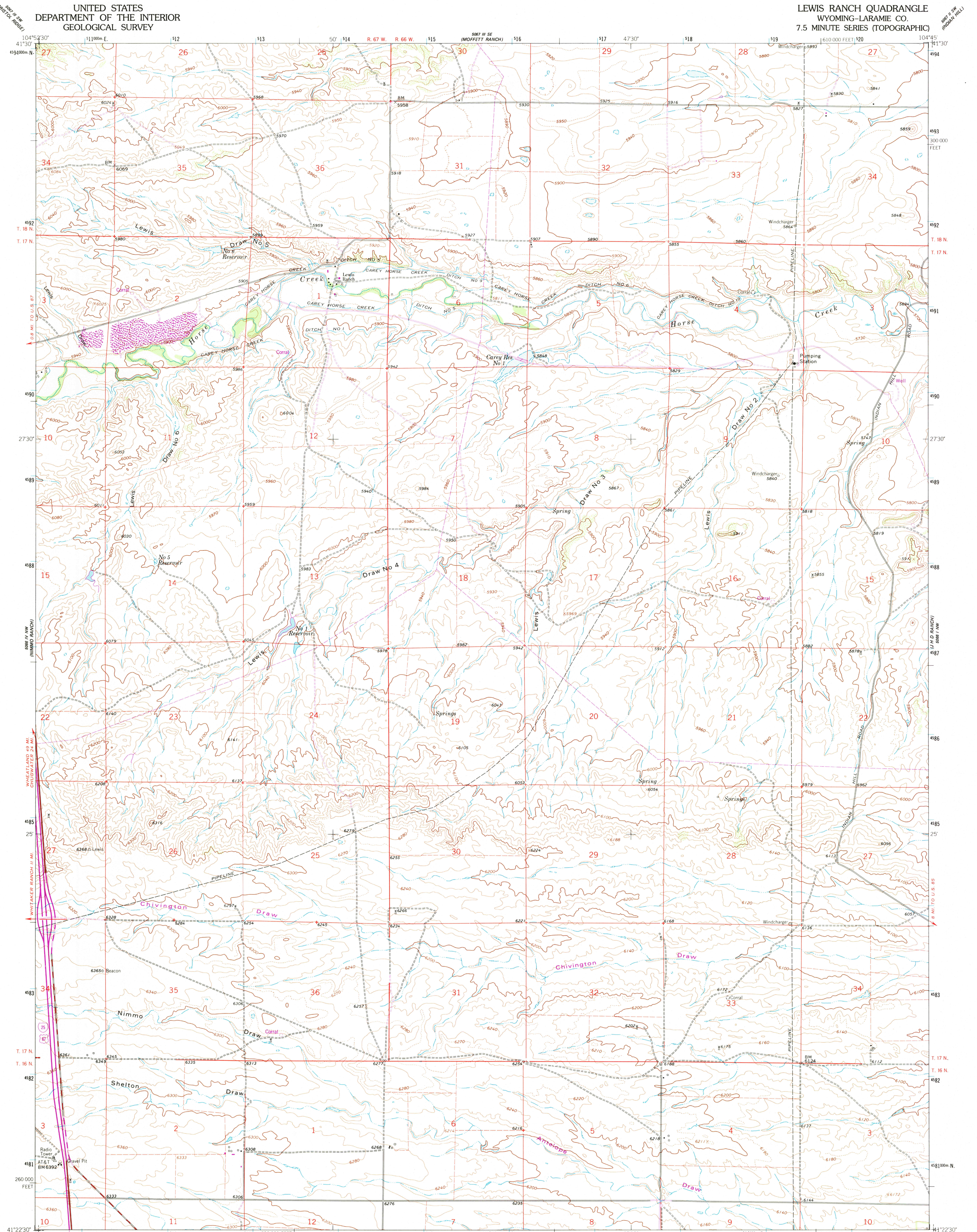


UNITED STATES  
DEPARTMENT OF THE INTERIOR  
GEOLOGICAL SURVEY

LEWIS RANCH QUADRANGLE  
WYOMING-LARAMIE CO.  
7.5 MINUTE SERIES (TOPOGRAPHIC)



Produced by the United States Geological Survey  
Control by USGS and NOS/NOAA

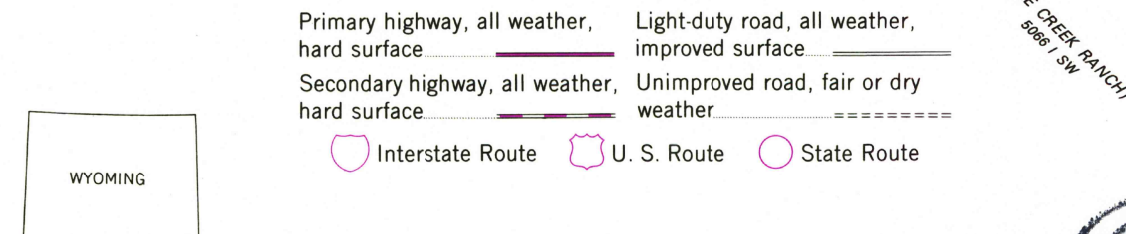
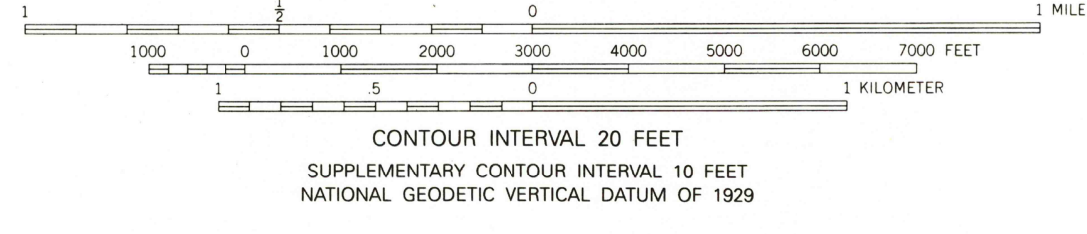
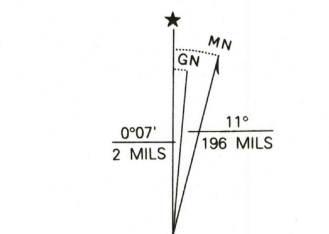
Compiled from imagery taken 1961. Photoinspected using  
imagery dated 1991; no major culture or drainage changes  
observed. PLSS and survey control current as of 1962  
Names verified 1994

North American Datum of (NAD 27). Projection and  
10000-foot ticks: Wyoming Coordinate System, east zone  
(Transverse Mercator)

Blue 1000-meter Universal Transverse Mercator ticks, zone 13  
North American Datum of 1983 (NAD 83) is shown by dashed  
corner ticks. The values of the shift between NAD 27 and NAD 83  
for 7.5-minute intersections are obtainable from National Geodetic  
Survey NADCON software

Fine red dashed lines indicate selected fence lines

Revisions shown in purple and woodland compiled from  
aerial photographs taken 1976 and other source data  
This information not field checked. Map edited 1978



THIS MAP COMPLIES WITH NATIONAL MAP ACCURACY STANDARDS  
FOR SALE BY U.S. GEOLOGICAL SURVEY, DENVER, COLORADO 80225  
OR RESTON, VIRGINIA 22092  
A FOLDER DESCRIBING TOPOGRAPHIC MAPS AND SYMBOLS IS AVAILABLE ON REQUEST

LEWIS RANCH, WY

41104-D7-TF-024

1991

DMA 5066 IV NE-SERIES V874

