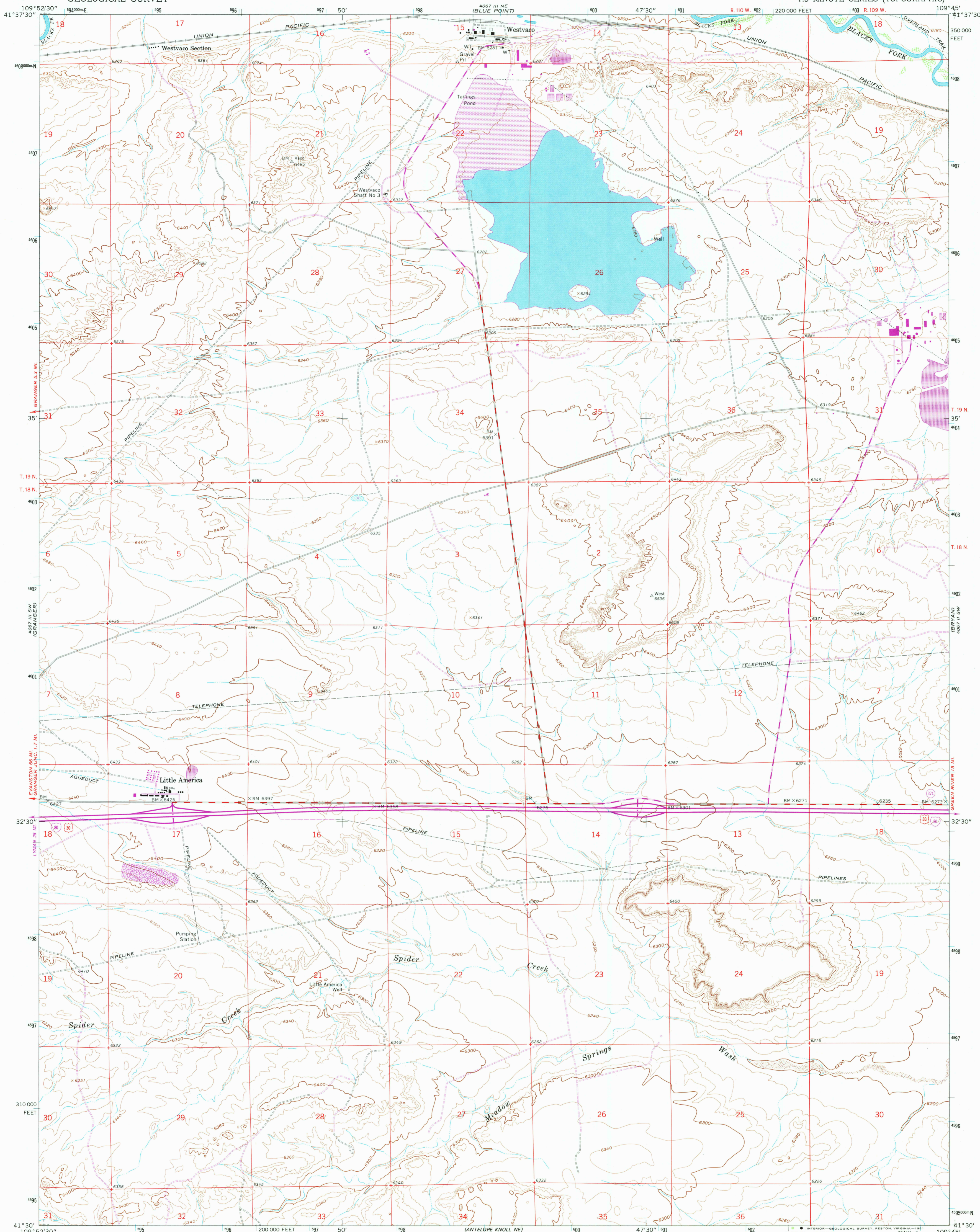


UNITED STATES
DEPARTMENT OF THE INTERIOR
GEOLOGICAL SURVEY

LITTLE AMERICA QUADRANGLE
WYOMING—SWEETWATER CO.
7.5 MINUTE SERIES (TOPOGRAPHIC)

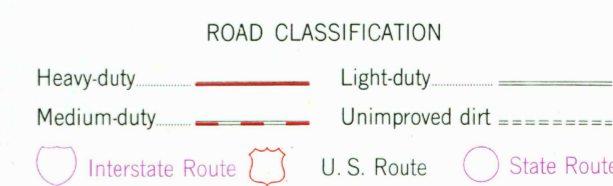
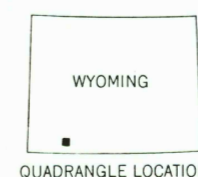
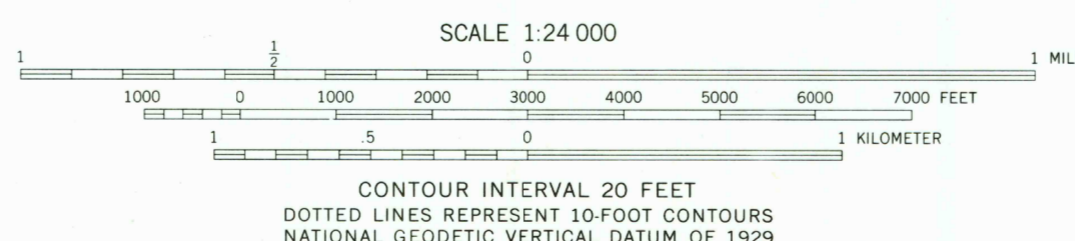
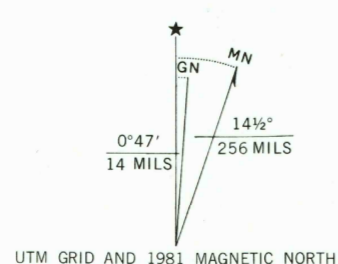


Mapped, edited, and published by the Geological Survey

Control by USGS and NOS/NOAA
Topography by photogrammetric methods from aerial photographs taken 1956. Field checked 1961
Polyconic projection. 1927 North American datum
10,000-foot grid based on Wyoming coordinate system, west central zone
1000-meter Universal Transverse Mercator grid ticks, zone 12, shown in blue

To place on the predicted North American Datum 1983
move the projection lines 9 meters north and
60 meters east as shown by dashed corner ticks

Revisions shown in purple compiled from aerial photographs
taken 1977 and other source data. This information not
field checked. Map edited 1980



THIS MAP COMPLIES WITH NATIONAL MAP ACCURACY STANDARDS
FOR SALE BY U. S. GEOLOGICAL SURVEY, DENVER, COLORADO 80225, OR RESTON, VIRGINIA 22092
A FOLDER DESCRIBING TOPOGRAPHIC MAPS AND SYMBOLS IS AVAILABLE ON REQUEST

LITTLE AMERICA, WYO.
N4130—W10945/7.5

1961
PHOTOREVISED 1980
DMA 4067 III SE—SERIES V874

RETURN TO:
USGS AND HISTORICAL MAP ARCHIVES

DEC 24 1981

2400